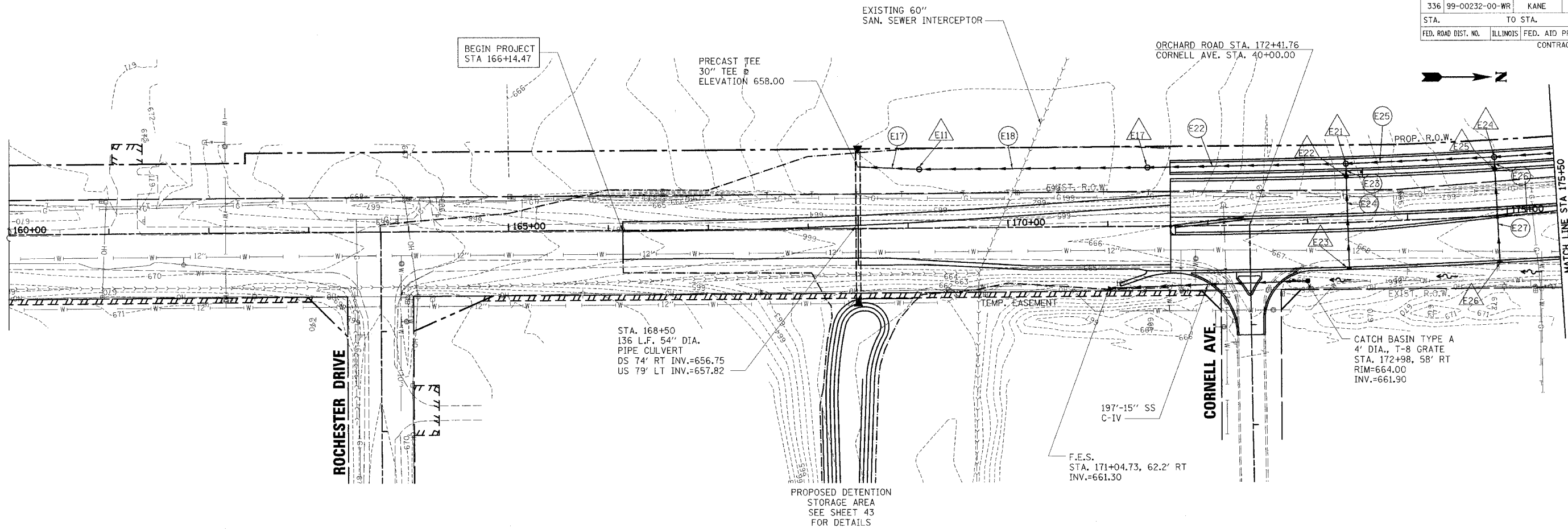


F.A.P. RTE.	SECTION	COUNTY	TOTAL SHEETS	SHEET NO.
336	99-00232-00-WR	KANE	97	39
STA.	TO STA.			
FED. ROAD DIST. NO.	ILLINOIS	FED. AID PROJECT	CONTRACT NO.: 83738	

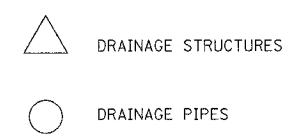


DRAINAGE STRUCTURE TABLE

NO.	STATION	OFFSET	STRUCTURE TYPE			DIA.	FRAME	RIM	NORTH INVERT	SOUTH INVERT	WEST INVERT	EAST INVERT	RESTRICTED DEPTH
			MH	CB	INLET								
E11	169+11.44	59.0' LT.	A			5'	T-1, CL	664.69	658.22	658.17	---	658.35	X
E12	NOT USED												
E13	NOT USED												
E14	NOT USED												
E15	NOT USED												
E16	NOT USED												
E17	171+40.00	59.0' LT.	A			5'	T-1, CL	665.58	658.95	658.90	---	---	X
E18	NOT USED												
E19	NOT USED												
E20	NOT USED												
E21	173+40.00	59.0' LT.	A			5'	T-1, CL	666.48	659.38	659.33	---	661.60	X
E22	173+40.00	45.0' LT.		A		4'	T-24 F&G	666.52	---	---	661.65	661.65	
E23	173+40.00	45.0' RT.			A	2'	T-24 F&G	666.52	---	---	662.08	---	
E24	174+90.00	59.0' LT.	A			5'	T-1, CL	667.99	659.87	659.82	---	662.29	
E25	174+90.00	45.0' LT.		A		4'	T-24 F&G	667.19	---	---	662.34	662.34	
E26	174+90.00	45.0' RT.			A	2'	T-24 F&G	667.19	---	---	663.21	---	

PIPE TABLE

NO.	STRUCTURE - STRUCTURE	TYPE	DIA.	LIN. FT.	T.B. CU. YD.	SLOPE %
E12	NOT USED					
E13	NOT USED					
E14	NOT USED					
E15	NOT USED					
E16	NOT USED					
E17	54" CULVERT TO E11	TYPE 1	30"	58	35.5	0.30
E18	E11 TO E17	TYPE 1	30"	225	137.13	0.30
E19	NOT USED					
E20	NOT USED					
E21	NOT USED					
E22	E17 TO E21	TYPE 1	30"	197	130.1	0.30
E23	E21 TO E22	TYPE 1	12"	10	2.89	0.50
E24	E22 TO E23	TYPE 2	12"	88	18.92	0.50
E25	E21 TO E24	TYPE 2	30"	147	141.9	0.30
E26	E24 TO E25	TYPE 2	12"	10	3.31	0.50
E27	E25 TO E26	TYPE 2	12"	87	27.84	1.00



9/8/2006 10:29:26 AM K:\177700\Cad\Design\177700_DPP_06.Lcgn

<p>Excellence through Ownership</p> <p>200 West Front Street Wheaton, IL 60187</p>	REVISIONS NAME DATE		ILLINOIS DEPARTMENT OF TRANSPORTATION KANE COUNTY DIVISION OF TRANSPORTATION ORCHARD ROAD RECONSTRUCTION ORCHARD ROAD DRAINAGE AND UTILITIES PLAN STA. 160+00 TO STA. 175+50 SCALE: VERT. DRAWN BY: RJN HORIZ. CHECKED BY: SPF DATE: 11/04/05	