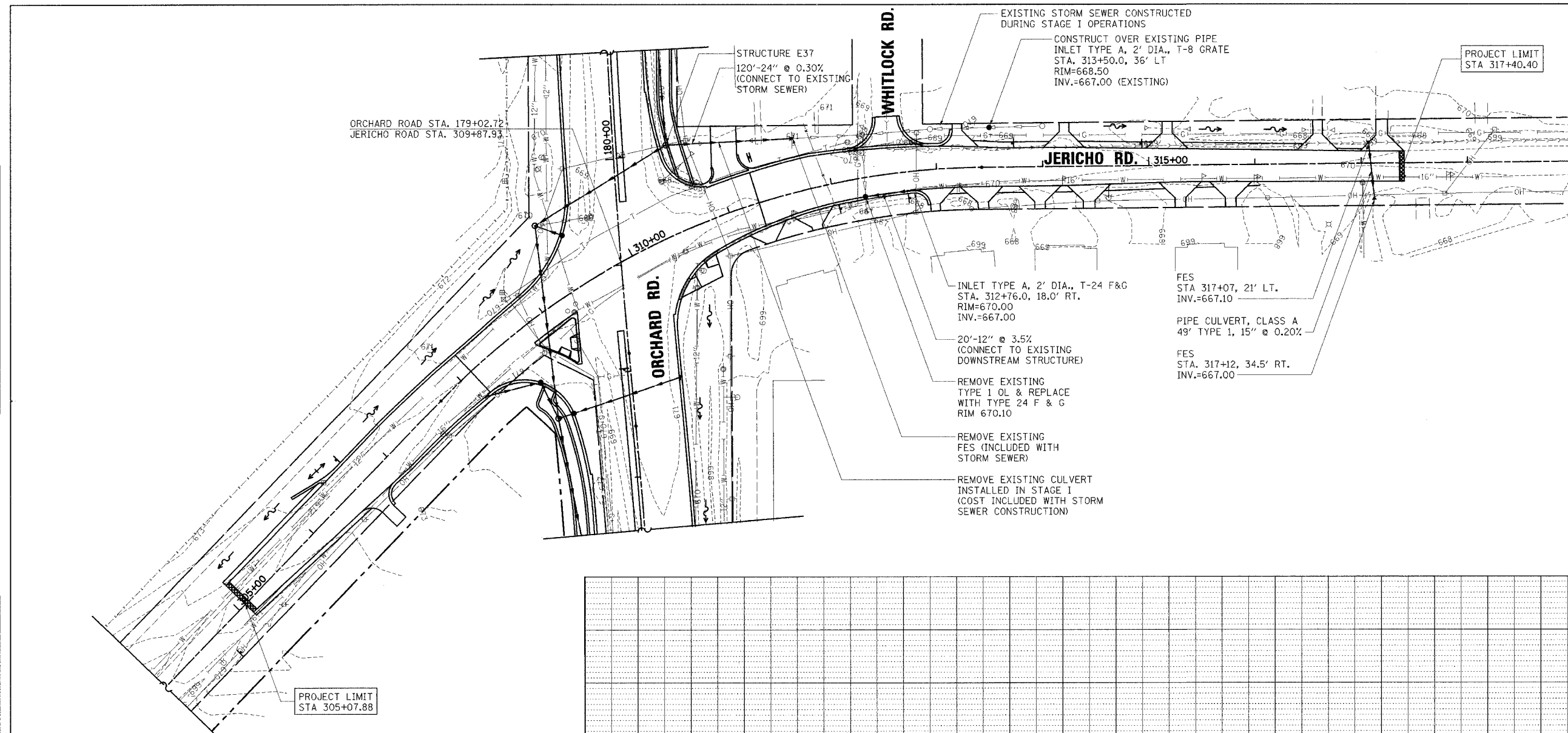
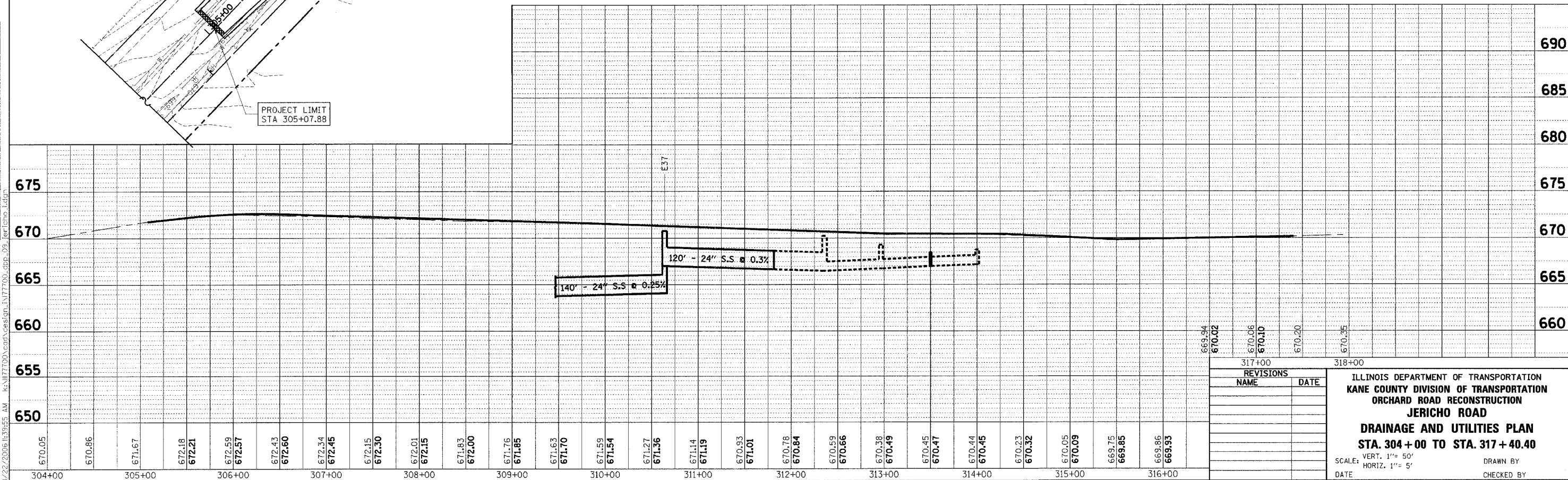


F.A. RTE.	SECTION	COUNTY	TOTAL SHEETS	SHEET NO.
336	99-00232-00-WR	KANE	96	42
STA.	TO STA.			
FED. ROAD DIST. NO.	ILLINOIS	FED. AID PROJECT	CONTRACT NO.: 83738	



NOTES

ADDITIONAL STORM SEWER AND CULVERT WORK WILL BE REQUIRED FOR STAGING OPERATIONS. SEE STAGE I MAINTENANCE OF TRAFFIC PLANS FOR MORE INFORMATION. WORK THIS SHEET WITH DRAINAGE PLANS FOR ORCHARD ROAD



REVISIONS	
NAME	DATE

ILLINOIS DEPARTMENT OF TRANSPORTATION
KANE COUNTY DIVISION OF TRANSPORTATION
ORCHARD ROAD RECONSTRUCTION
JERICHO ROAD
DRAINAGE AND UTILITIES PLAN
STA. 304 + 00 TO STA. 317 + 40.40

SCALE: VERT. 1" = 50'
HORIZ. 1" = 5'

DATE _____ DRAWN BY _____
CHECKED BY _____

PLAN	REVISIONS	DATE
NO.	BY	

PROFILE	REVISIONS	DATE
NO.	BY	

8/22/2006 10:34:55 AM ks:\117700\cadd\civil\117700_dpp_09_117700.dgn