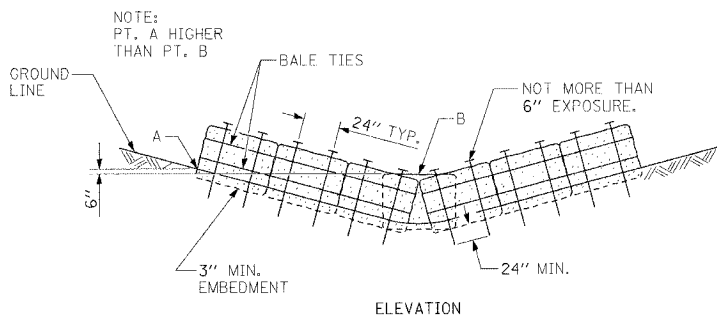
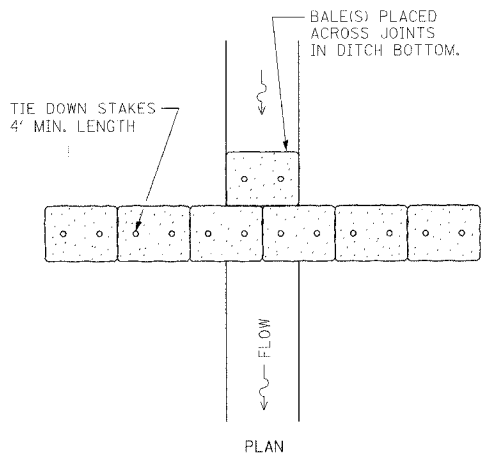


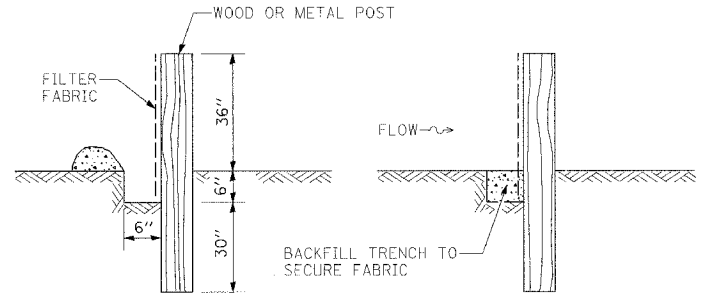
F.A.P. RTE.	SECTION	COUNTY	TOTAL SHEETS	SHEET NO.
336	99-00232-00-WR	KANE	97	51
STA.		TO STA.		
FED. ROAD DIST. NO.	ILLINOIS	FED. AID PROJECT		
CONTRACT NO.: 83738				

SEDIMENTATION AND EROSION CONTROL NOTES

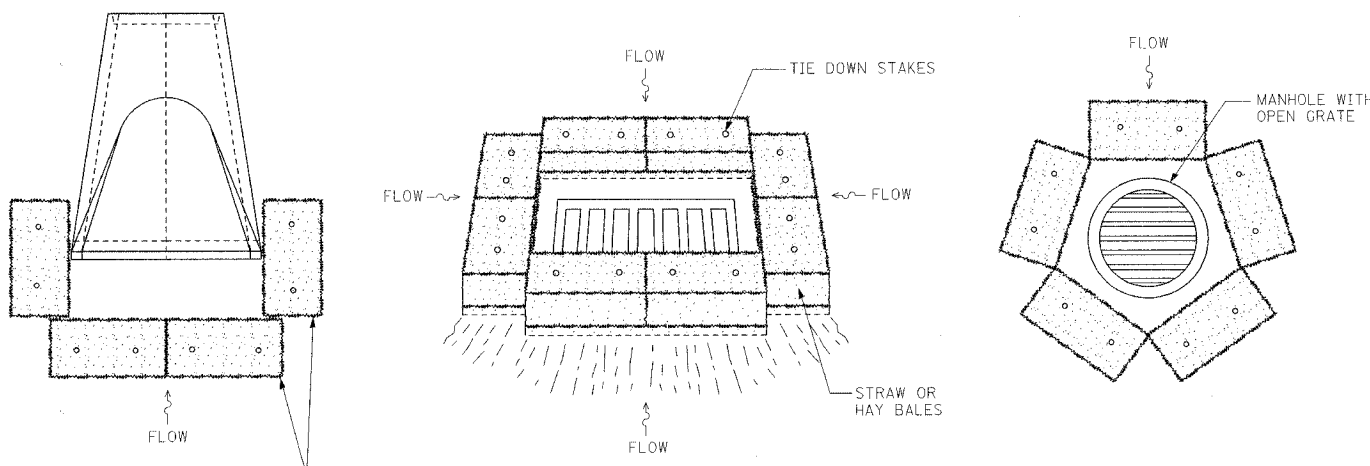
- SOIL DISTURBANCE SHALL BE CONDUCTED IN SUCH A MANNER AS TO MINIMIZE EROSION. SOIL-STABILIZATION MEASURES SHALL CONSIDER THE TIME OF YEAR, SITE CONDITIONS, AND THE USE OF TEMPORARY OR PERMANENT MEASURES.
- SOIL-EROSION AND SEDIMENT-CONTROL FEATURES SHALL BE CONSTRUCTED PRIOR TO THE COMMENCEMENT OF HYDROLOGIC DISTURBANCE OF UPLAND AREAS.
- DISTURBED AREAS SHALL BE STABILIZED WITH TEMPORARY OR PERMANENT MEASURES WITHIN 7 CALENDAR DAYS OF THE END OF THE ACTIVE HYDROLOGIC DISTURBANCE, OR REDISTURBANCE.
- AREAS OR EMBANKMENTS HAVING SLOPES GREATER THAN 3H:1V SHALL BE STABILIZED WITH SOD, MAT, OR BLANKET IN COMBINATION WITH SEEDING.
- ALL STORM SEWERS THAT ARE OR WILL BE FUNCTIONING DURING CONSTRUCTION SHALL BE PROTECTED BY AN APPROPRIATE SEDIMENT-CONTROL MEASURE.
- ALL TEMPORARY EROSION AND SEDIMENT-CONTROL MEASURES SHALL BE REMOVED WITHIN 30 DAYS AFTER FINAL SITE STABILIZATION IS ACHIEVED OR AFTER THE TEMPORARY MEASURES ARE NO LONGER NEEDED.
- ALL TEMPORARY AND PERMANENT EROSION-CONTROL MEASURES MUST BE MAINTAINED AND REPAIRED BY THE CONTRACTOR AS NEEDED. THE PROPERTY OWNER SHALL BE ULTIMATELY RESPONSIBLE FOR MAINTENANCE AND REPAIR.
- A STABILIZED MAT OF AGGREGATE UNDERLAIN WITH FILTER CLOTH (OR OTHER APPROPRIATE MEASURE) SHALL BE LOCATED AT ANY POINT WHERE TRAFFIC WILL BE ENTERING OR LEAVING A CONSTRUCTION SITE TO OR FROM A PUBLIC RIGHT-OF-WAY, STREET, ALLEY, OR PARKING AREA. ANY SEDIMENT OR SOIL REACHING AN IMPROVED PUBLIC RIGHT-OF-WAY, STREET, ALLEY, OR PARKING AREA SHALL BE REMOVED BY SCRAPING OR STREET CLEANING AS ACCUMULATIONS WARRANT AND TRANSPORTED TO A CONTROLLED SEDIMENT-DISPOSAL AREA.
- SOIL STOCKPILES SHALL NOT BE LOCATED IN A FLOOD-PRONE AREA OR A DESIGNATED BUFFER PROTECTING WATERS OF THE UNITED STATES.
- IF DE-WATERING SERVICES ARE USED, ADJOINING PROPERTIES AND DISCHARGE LOCATIONS SHALL BE PROTECTED FROM EROSION. DISCHARGES SHALL BE ROUTED THROUGH AN EFFECTIVE SEDIMENT-CONTROL MEASURE (e.g., SEDIMENT TRAP, SEDIMENT BASIN, OR OTHER APPROPRIATE MEASURE).
- THE EROSION-CONTROL MEASURES INDICATED ON THE PLANS ARE THE MINIMUM REQUIREMENTS. ADDITIONAL MEASURES MAY BE REQUIRED, AS DIRECTED BY THE ENGINEER OR GOVERNING AGENCY.



ROLLED EXCELSIOR OR STRAW BALES FOR DITCH CHECK

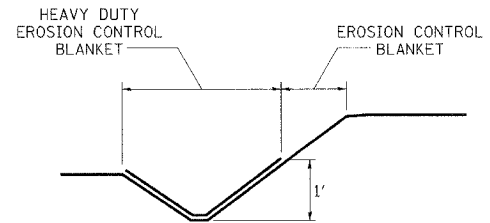


SILT FILTER FENCE AS A PERIMETER EROSION BARRIER



ALL STORM SEWER STRUCTURES HAVING OPEN GRATES SHALL HAVE BURLAP OR FILTER FABRIC UNDER GRATE.

INLET AND PIPE PROTECTION



TYPICAL APPLICATION OF HEAVY DUTY EROSION CONTROL BLANKET

<p>Excellence through Ownership</p> <p>200 West Front Street Wheaton, IL 60187</p>	REVISIONS NAME DATE		ILLINOIS DEPARTMENT OF TRANSPORTATION KANE COUNTY DIVISION OF TRANSPORTATION ORCHARD ROAD RECONSTRUCTION EROSION CONTROL NOTES & DETAILS SCALE: VERT. HORIZ. DATE: 11/04/05
		DRAWN BY: RJN CHECKED BY: SPF	

11/4/2005 3:33:46 PM K:\N17700\cadd\design\N17700_erosionnotes.dgn