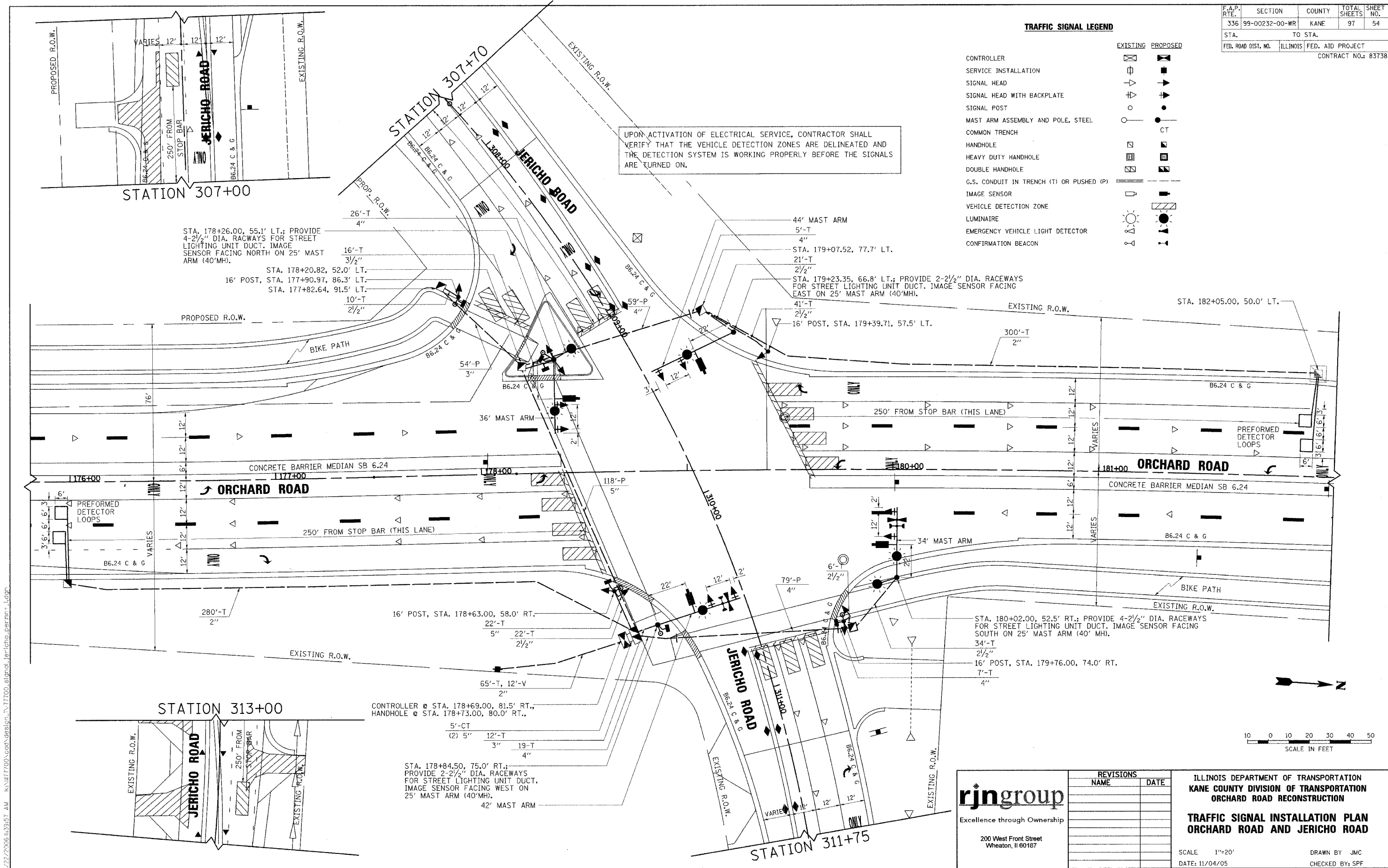


F.A.P. RTE.	SECTION	COUNTY	TOTAL SHEETS	SHEET NO.
336	99-00232-00-WR	KANE	97	54
STA.		TO STA.		
FED. ROAD DIST. NO.	ILLINOIS	FED. AID PROJECT	CONTRACT NO.: 83738	

TRAFFIC SIGNAL LEGEND

	EXISTING	PROPOSED
CONTROLLER		
SERVICE INSTALLATION		
SIGNAL HEAD		
SIGNAL HEAD WITH BACKPLATE		
SIGNAL POST		
MAST ARM ASSEMBLY AND POLE, STEEL		
COMMON TRENCH		CT
HANDHOLE		
HEAVY DUTY HANDHOLE		
DOUBLE HANDHOLE		
G.S. CONDUIT IN TRENCH (T) OR PUSHED (P)		
IMAGE SENSOR		
VEHICLE DETECTION ZONE		
LUMINAIRE		
EMERGENCY VEHICLE LIGHT DETECTOR		
CONFIRMATION BEACON		

UPON ACTIVATION OF ELECTRICAL SERVICE, CONTRACTOR SHALL VERIFY THAT THE VEHICLE DETECTION ZONES ARE DELINEATED AND THE DETECTION SYSTEM IS WORKING PROPERLY BEFORE THE SIGNALS ARE TURNED ON.



STA. 178+26.00, 55.1' LT.; PROVIDE 4-2 1/2" DIA. RACEWAYS FOR STREET LIGHTING UNIT DUCT. IMAGE SENSOR FACING NORTH ON 25' MAST ARM (40'MH).
 16' POST, STA. 177+90.97, 86.3' LT.
 STA. 177+82.64, 91.5' LT.

44' MAST ARM
 5'-T 4"
 STA. 179+07.52, 77.7' LT.
 21'-T 2 1/2"
 STA. 179+23.35, 66.8' LT.; PROVIDE 2-2 1/2" DIA. RACEWAYS FOR STREET LIGHTING UNIT DUCT. IMAGE SENSOR FACING EAST ON 25' MAST ARM (40'MH).
 41'-T 4"
 16' POST, STA. 179+39.71, 57.5' LT.

STA. 180+02.00, 52.5' RT.; PROVIDE 4-2 1/2" DIA. RACEWAYS FOR STREET LIGHTING UNIT DUCT. IMAGE SENSOR FACING SOUTH ON 25' MAST ARM (40' MH).
 34'-T 2 1/2"
 16' POST, STA. 179+76.00, 74.0' RT.
 7'-T 4"

CONTROLLER @ STA. 178+69.00, 81.5' RT.,
 HANDHOLE @ STA. 178+73.00, 80.0' RT.,
 5'-CT (2) 5"
 12'-T 3"
 19'-T 4"
 STA. 178+84.50, 75.0' RT.; PROVIDE 2-2 1/2" DIA. RACEWAYS FOR STREET LIGHTING UNIT DUCT. IMAGE SENSOR FACING WEST ON 25' MAST ARM (40'MH).
 42'-T 4"

rjngroup
 Excellence through Ownership
 200 West Front Street
 Wheaton, IL 60187

REVISIONS	
NAME	DATE

ILLINOIS DEPARTMENT OF TRANSPORTATION
 KANE COUNTY DIVISION OF TRANSPORTATION
 ORCHARD ROAD RECONSTRUCTION
TRAFFIC SIGNAL INSTALLATION PLAN
ORCHARD ROAD AND JERICHO ROAD
 SCALE 1"=20'
 DATE: 11/04/05
 DRAWN BY JMC
 CHECKED BY: SPF

8/22/2006 10:39:57 AM ks:\17700\cadd\design\17700_signal_jericho_permm.dgn