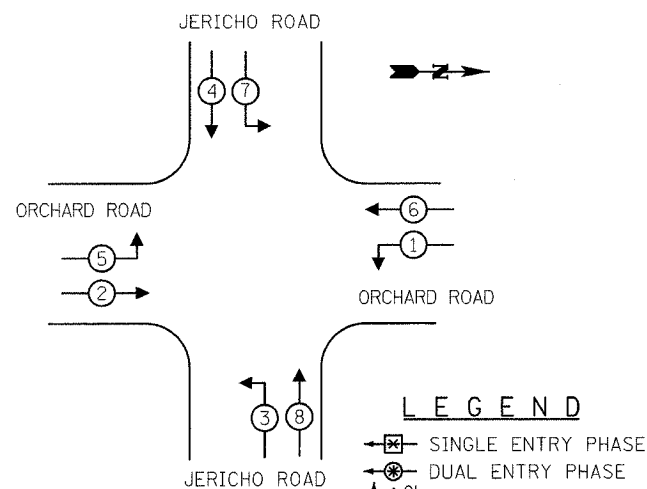


CONTROLLER SEQUENCE

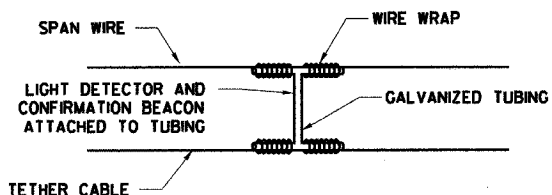


LEGEND

- ☒ SINGLE ENTRY PHASE
- ☒ DUAL ENTRY PHASE
- OL OVERLAP
- ☒ PEDESTRIAN PHASE
- * NUMBER REFERS TO ASSOCIATED PHASE.

PHASE DESIGNATION DIAGRAM

NOTE: DISABLE CONTROLLER SEQUENCE PHASE 3 + 7 IN THE CONTROL CABINET DURING CONSTRUCTION.



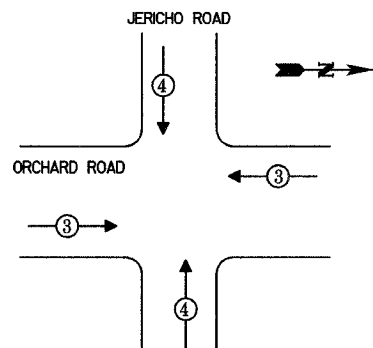
LIGHT DETECTOR AND CONFIRMATION BEACON MOUNTING FOR TEMPORARY TRAFFIC SIGNALS

TEMPORARY TRAFFIC SIGNAL INSTALLATION ELECTRICAL SERVICE REQUIREMENTS				TOTAL WATTAGE
TYPE	NO. LAMPS	WATTAGE	% OPERATIONS	
SIGNAL (RED)	12	135	0.50	810
(YELLOW)	12	135	0.25	405
(GREEN)	12	135	0.25	405
ARROW	4	135	0.10	54
PED. SIGNAL	0	90	1.00	0
CONTROLLER	1	100	1.00	100
LUMINAIRE	4	400	0.50	800
ILLUM. SIGN				
FLASHER LED			0.50	
TOTAL =				2574

ENERGY COSTS - BILLED TO: Village of Montgomery
 (ADDRESS) 1300 S. Broadway
 Montgomery, IL 60538

ENERGY SUPPLY - CONTACT: Mr. Al Arands
 PHONE: (630) 691-4379
 COMPANY: Com Fct Customer Const. & Design

EMERGENCY VEHICLE PREEMPTION SEQUENCE



PROPOSED EMERGENCY VEHICLE PREEMPTORS	
EMERGENCY VEHICLE PREEMPTOR	3 4
MOVEMENT	←→ ↕

TEMPORARY CABLE PLAN LEGEND

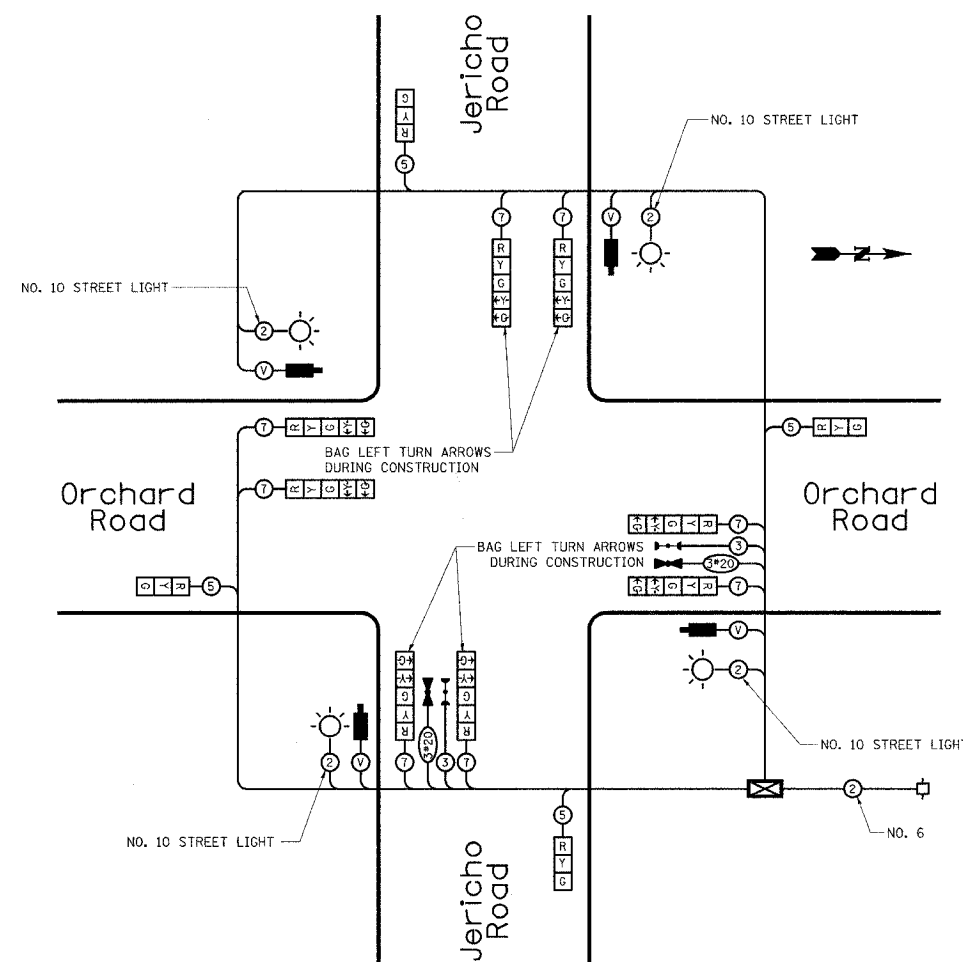
- ☒ TEMPORARY TRAFFIC SIGNAL SECTION OR PEDESTRIAN SIGNAL SECTION 12"
- ☒ TEMPORARY CONTROLLER CABINET
- ☒ TEMPORARY SERVICE INSTALLATION
- Ⓟ INDICATES NUMBER OF CONDUCTORS IN CABLE. ALL CONDUCTORS TO BE NUMBER 14 AWG WIRE UNLESS OTHERWISE NOTED.
- ☒ IMAGE SENSOR
- ☒ STREET LIGHT LUMINAIRE
- ☒ AUTOSCOPE - VIDEO CABLE IN CONDUIT, NO. 16, 11/C, SHIELDED ITERIS - POWER AND VIDEO COAXIAL CABLE IN CONDUIT, NO. 16 3/C POWER AND NO. 20 SOLID BC COAXIAL
- ☒ EMERGENCY VEHICLE LIGHT DETECTOR
- ☒ CONFIRMATION BEACON

- BILL OF MATERIALS - VIDEO DETECTION SYSTEM (ITERIS)

QTY.	UNIT	ITEM
4	EACH	ITERIS COLOR CAMERA, MODEL RZ-4
4	EACH	ITERIS PIGTAILN - 18"
4	EACH	CAMERA BRACKET, PEDESTAL MOUNT
2	EACH	EDGE 2-2N PROCESSOR
1	EACH	9" MONITOR
4	EACH	VIDEO PATCH CABLE
4	EACH	SURGE SURRESTOR, PANEL MOUNT
4	EACH	CAMKIT2 CONNECTOR KIT
1	EACH	POINTING DEVICE
772	FOOT	BELDEN 8281, VIDEO CABLE
772	FOOT	BELDEN NO. 16, 3/C STRANDED, POWER CABLE

- NOTES:
- MINI HUB REQUIRES DETECTOR RACK WITH POWER SUPPLY. COST ASSOCIATED WITH SUPPLYING AND INSTALLING DETECTOR RACK AND POWER SUPPLY WILL BE CONSIDERED INCLUDED IN THE COST OF PAY ITEM "TEMPORARY TRAFFIC SIGNAL INSTALLATION".
 - ABOVE SYSTEM COMPATIBLE WITH TS-1 CONTROLLER (TYPICALLY USED FOR TEMPS). TEMPORARY CABINETS WITH TS-2 CONTROLLERS CAN USE TS2 MINI HUB SUPPLIED WITH EQUIPMENT FOR PERMANENT CABINET.

CABLE PLAN



NOTES:

- TRAFFIC CONTROL EQUIPMENT SHALL BE MANUFACTURED BY EAGLE.
- THE VIDEO VEHICLE DETECTION SYSTEM SHALL BE MANUFACTURED BY AUTOSCOPE OR ITERIS AND SHALL BE REUSED IN THE PERMANENT TRAFFIC SIGNAL INSTALLATION.
- BAG CONTROLLER SEQUENCE PHASE 3 + 7 DURING CONSTRUCTION AND DISABLE IN THE CONTROL CABINET.
- THE EMERGENCY VEHICLE PREEMPTION EQUIPMENT SHALL BE MANUFACTURED BY TOMAR.

rjngroup
 Excellence through Ownership
 200 West Front Street
 Wheaton, IL 60187

REVISIONS	
NAME	DATE

ILLINOIS DEPARTMENT OF TRANSPORTATION
 KANE COUNTY DIVISION OF TRANSPORTATION
 ORCHARD ROAD RECONSTRUCTION
 TEMPORARY CABLE PLAN AND
 TEMPORARY PHASE
 DESIGNATION DIAGRAM
 ORCHARD ROAD AND JERICHO ROAD

SCALE: DATE: 11/04/05
 DRAWN BY: JMC
 CHECKED BY: SFP