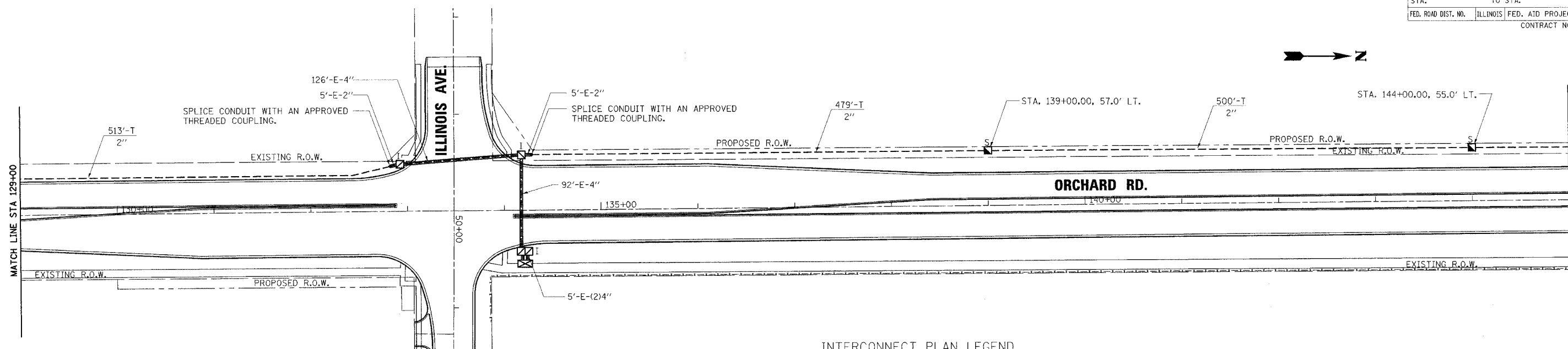
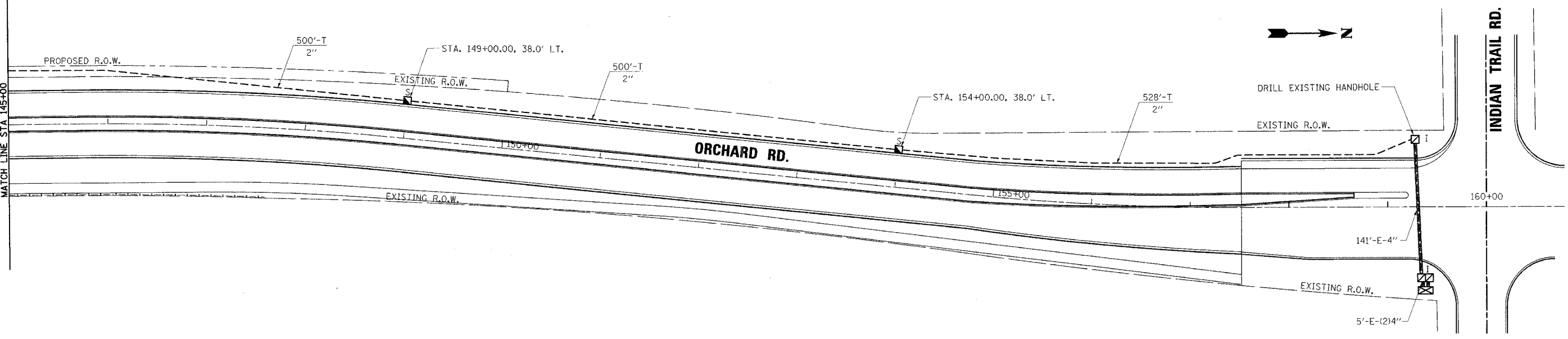


F.A.P. RTE.	SECTION	COUNTY	TOTAL SHEETS	SHEET NO.
336	99-00232-00-WR	KANE	97	63
STA.	TO STA.			
FED. ROAD DIST. NO.	ILLINOIS	FED. AID PROJECT		
CONTRACT NO.: 83738				



INTERCONNECT PLAN LEGEND

	PROPOSED	EXISTING
CONTROLLER		
HANDHOLE		
DOUBLE HANDHOLE		
HEAVY-DUTY HANDHOLE		
G.S. CONDUIT IN TRENCH OR PUSHED		
DETECTOR LOOP		
SYSTEM	S	
INTERSECTION	IP	I



rjngroup
Excellence through Ownership
200 West Front Street
Wheaton, IL 60187

REVISIONS	
NAME	DATE

ILLINOIS DEPARTMENT OF TRANSPORTATION
KANE COUNTY DIVISION OF TRANSPORTATION
ORCHARD ROAD RECONSTRUCTION
ORCHARD ROAD INTERCONNECT PLAN
SCALE: 1"=50'
DATE: 11/04/05
DRAWN BY: JMC
CHECKED BY: SPF

11/4/2005 10:54:41 AM k:\1177700\Cad\Design\177700_Interconnect_07.dgn