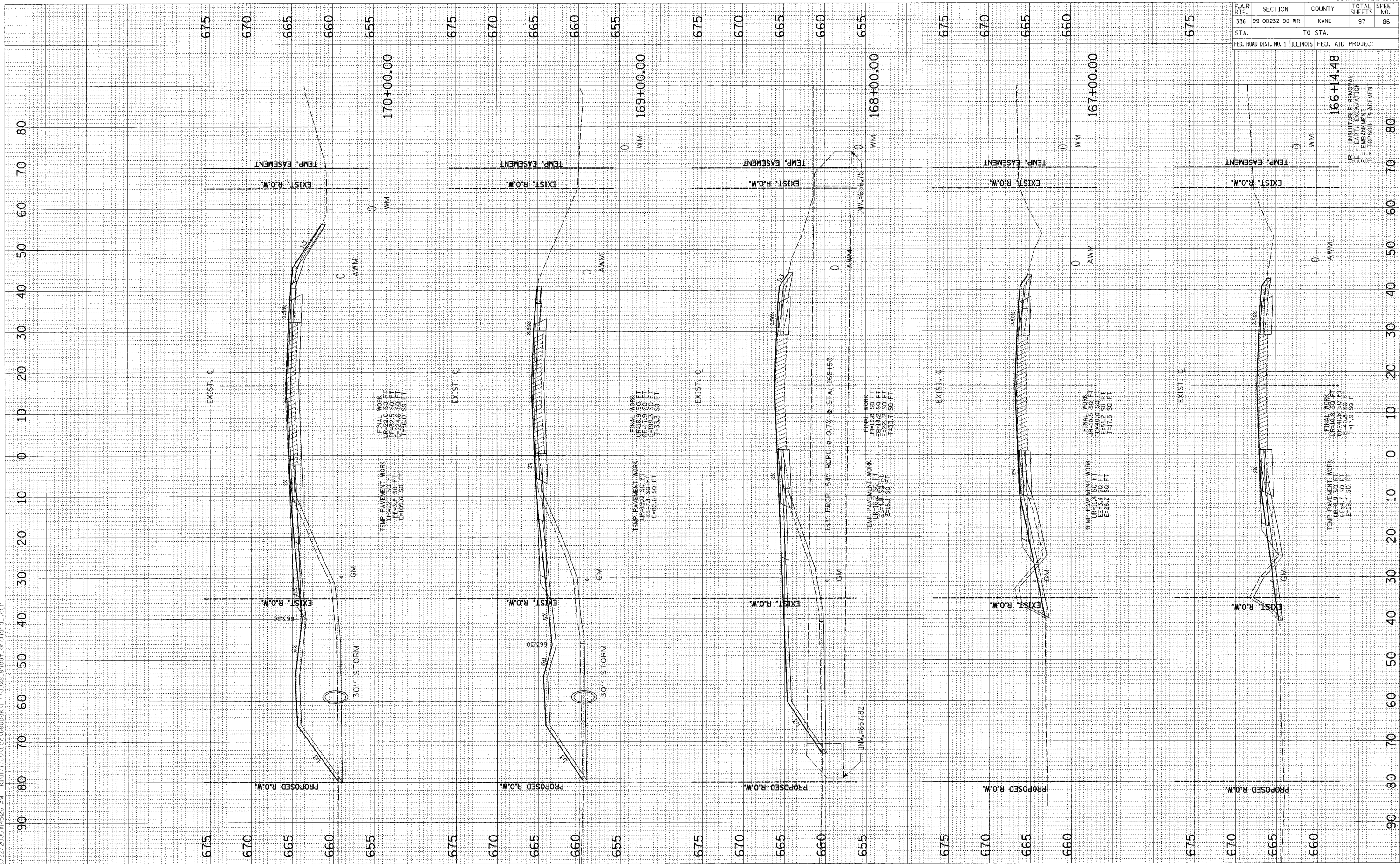


ORIGINAL SURVEY	DATE
NOTED SURVEY	BY
NOTE BOOK	
AMPLAS	
TEMPLATE	
MS	

FINAL SURVEY	DATE
NOTED SURVEY	BY
NOTE BOOK	
AMPLAS	
TEMPLATE	
MS	

8/22/2006 8:45:26 AM K:\M17700\Cad\CADDOK\17700\AS-37001-07\019-d'.dgn



F.A.R. RTE.	SECTION	COUNTY	TOTAL SHEETS	SHEET NO.
336	99-00232-00-WR	KANE	97	86
STA.	TO STA.			
FED. ROAD DIST. NO. 1	ILLINOIS	FED. AID PROJECT		

166+14.48  
UR = UNSUITABLE REMOVAL  
EE = EARTH EXCAVATION  
E = ENHANCEMENT  
T = TOPSOIL PLACEMENT

ORCHARD ROAD CROSS SECTIONS