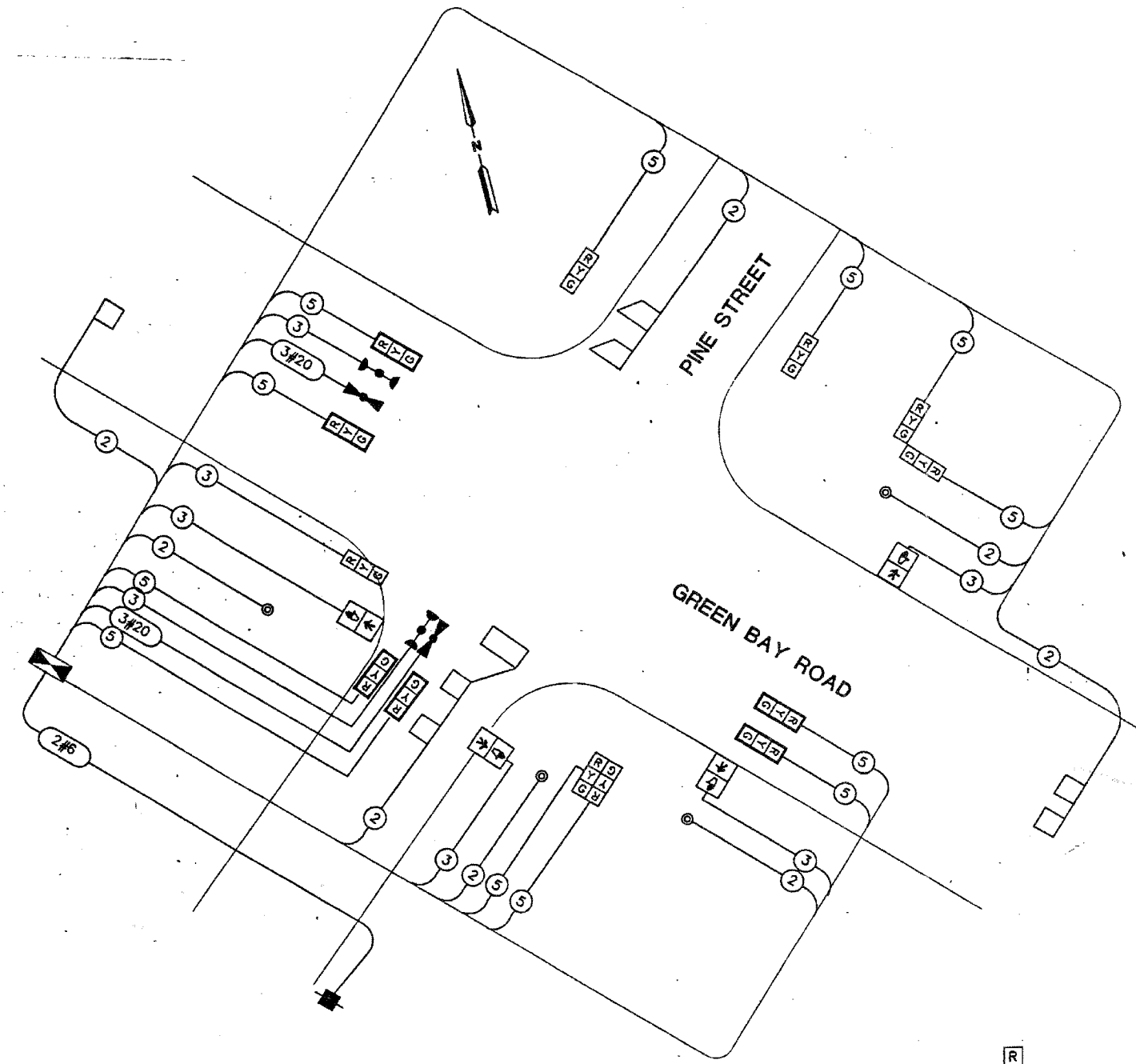


CONTROLLER SEQUENCE

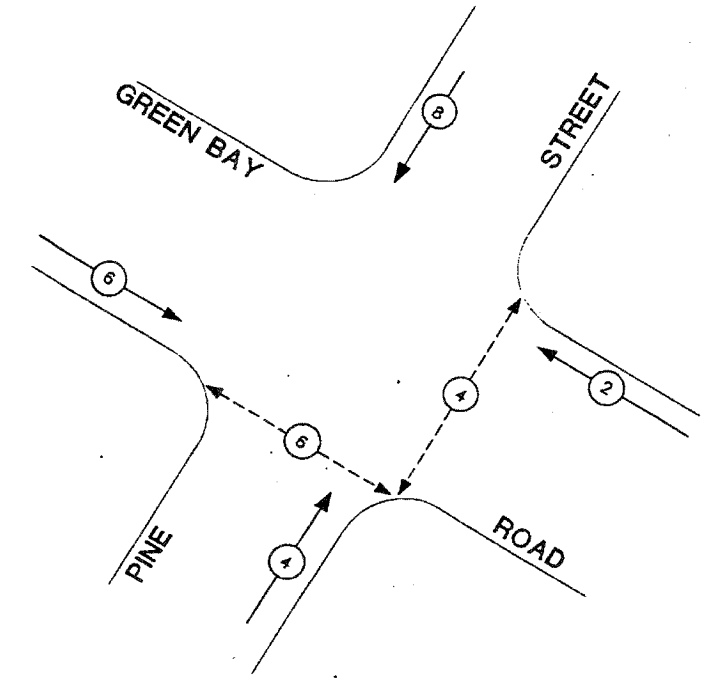
REFERRING TO STANDARD 2393 THE VEHICULAR AND PEDESTRIAN PHASES USED ARE DESIGNATED BELOW.



CABLE PLAN

SCHEDULE OF QUANTITIES

- CABLE PLAN LEGEND**
- [R] 12" TRAFFIC SIGNAL SECTION
 - [Cabinet Symbol] CONTROLLER CABINET
 - [Star Symbol] SERVICE INSTALLATION
 - [Square Symbol] VEHICLE DETECTOR, INDUCTION LOOP
 - [Circle Symbol] PEDESTRIAN PUSHBUTTON
 - [Pedestrian Symbol] PEDESTRIAN SIGNAL SECTION
 - [Signal Face Symbols] SIGNAL FACES WITH OR WITHOUT BACKPLATE
 - (5) DENOTES NUMBER OF CONDUCTORS (NEW). ALL LOOP DETECTOR CABLE TO BE SHIELDED. ALL CABLE # 14 EXCEPT AS INDICATED.

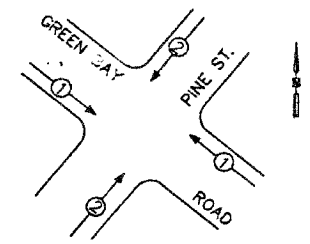


PROPOSED PHASE DESIGNATION DIAGRAM

DUAL ENTRY - ALL LEGS

- LEGEND**
- [Dual Entry Symbol] DUAL ENTRY PHASE
 - [Pedestrian Symbol] PEDESTRIAN PHASE
 - *
 - NUMBERS REFER TO ASSOCIATED PHASE

EMERGENCY VEHICLE PREEMPTION SEQUENCE NOTES



PROPOSED PRIORITY LANES		
PRIORITY LANE INTERVAL	1	2
MOVEMENT	-	

FOR INFORMATION ONLY

ILLINOIS DEPARTMENT OF TRANSPORTATION
CABLE PLAN AND PHASE DESIGNATION DIAGRAM
GREEN BAY ROAD AND PINE STREET WINNETKA ILLINOIS

DATE: _____ VERT. _____
 SCALE: _____ HORIZ. _____
 DESIGNED BY: _____ DRAWN BY: _____
 CHECKED BY: _____