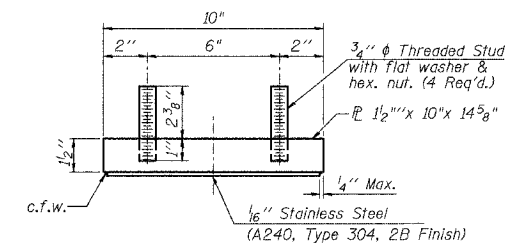


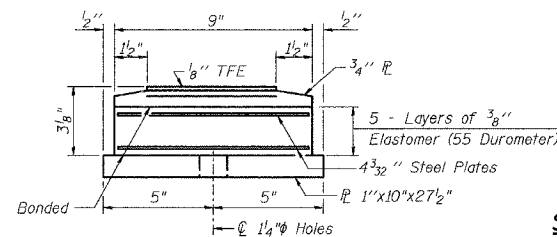
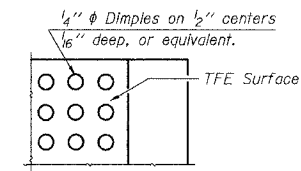
BEARING ASSEMBLY

Note: Shim plates shall not be placed under Bearing Assembly.



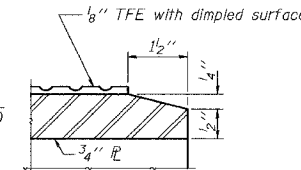
TOP BEARING ASSEMBLY

PLAN-TFE SURFACE

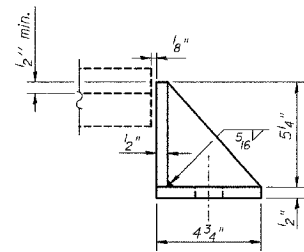


BOTTOM BEARING ASSEMBLY

SECTION THRU TFE

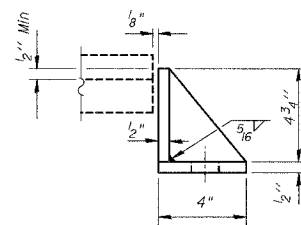
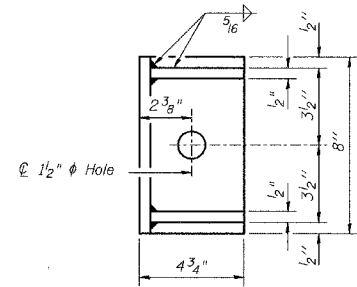


Notes:
The 1/8" TFE sheet shall be bonded directly to the top steel plate with a two-component, medium viscosity epoxy resin, conforming to the requirements of the Federal Specification MMM-A-134, Type I. The bond agent shall be applied on the full area of the contact surfaces. Bonding of 1/8" TFE sheet during vulcanizing process will be permitted provided the process and method of adjusting assembly height is approved by the Engineer.



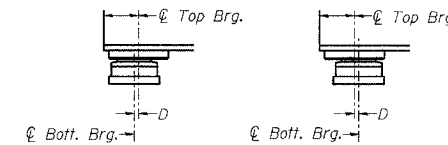
SIDE RETAINER

Equivalent rolled angle with stiffeners will be allowed in lieu of welded plates. Weight included with Structural Steel.



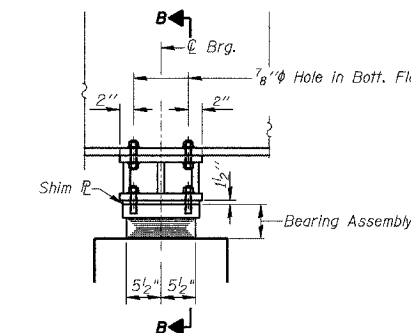
SIDE RETAINER

Equivalent rolled angle with stiffeners will be allowed in lieu of welded plates. Weight included with Structural Steel.

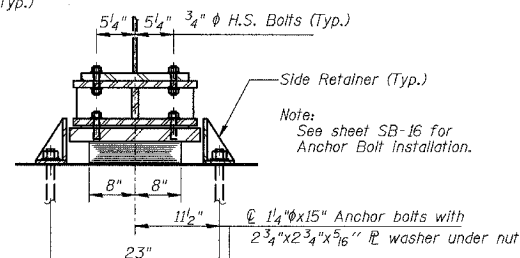


SETTING ANCHOR BOLTS AT EXP. BRG.

D=1/8" per each 100' of expansion for every 15° temp. change from the normal temp. of 50°F.

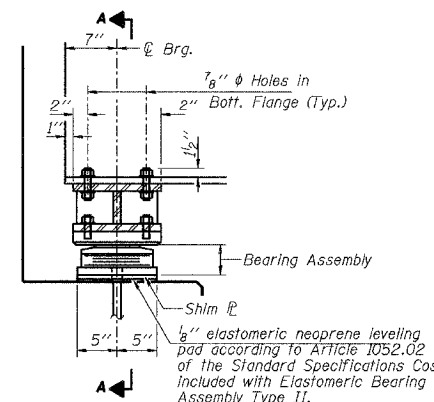


ELEVATION AT EAST PIER & WEST PIER



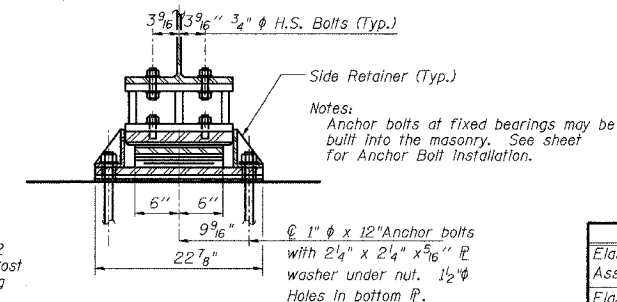
SECTION B-B

TYPE I ELASTOMERIC EXP. BRG.



ELEVATION AT ABUT.

TYPE II ELASTOMERIC EXP. BRG.



SECTION A-A

BILL OF MATERIAL

Item	Unit	Total
Elastomeric Bearing Assembly Type I	Each	20
Elastomeric Bearing Assembly Type II	Each	20

Clorba Group, Inc.
CONSULTING ENGINEERS
500 NORTH CUMBERLAND AVENUE - CHICAGO, ILLINOIS 60606 - (773) 778-0700

VILLAGE OF WINNETKA, ILLINOIS
BEARING DETAILS I
PINE STREET OVER THE UNION PACIFIC R.R.
R.R. MILE POST 16.89 KENOSHA SUBDIVISION
COOK COUNTY STA. 101+09.96
STRUCTURE NO. 016-8259

REVISIONS	
NAME	DATE

SCALE: NONE
DATE: JUNE 2006
FILE: 3278

DRAWN BY: RCD
DESIGN BY: BWS
CHECKED BY: SCD

DATE: 7/20/2006
FILENAME: N:\PROJ\8278\Pine\Design\Structural\Pine_3278(CAD)\Final_plan_rev\3278-Pine-brdt01.dgn