

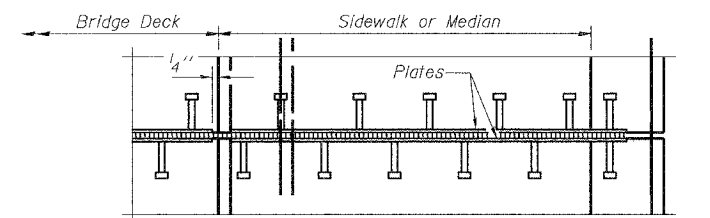
*Cut retainer bars in sidewalk or median 6" short of the sidewalk or median face.

SECTION THRU EXPANSION JOINT
(2 1/2" and 4" joint seals)

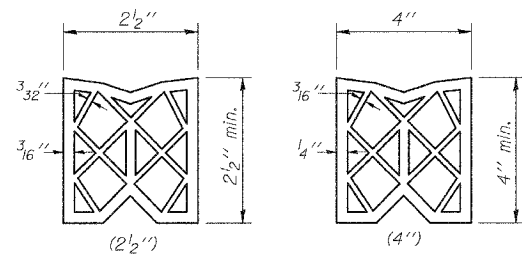
Bridge Joint System (Expansion)		
Design Movement	Required Preformed Joint Seal Size	Required Strip Seal Rated movement
1"	2 1/2"	1"
1 5/8"	4"	2"

GENERAL NOTES

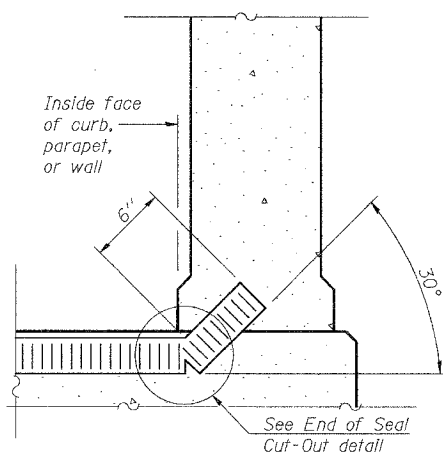
Furnish steel plates in segments of 20 feet maximum length. Maximum space between installed segments shall be 3/16". Seal space with silicone sealant suitable for structural steel.



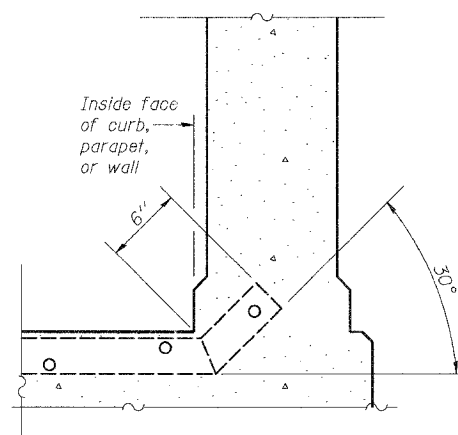
PLAN AT SIDEWALK OR MEDIAN



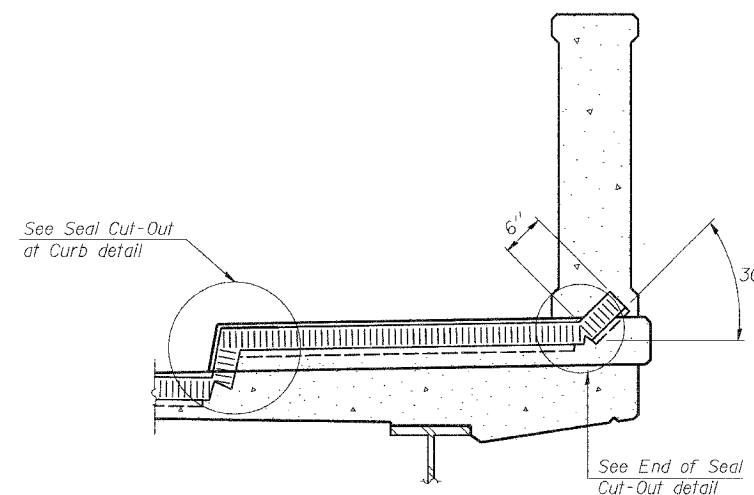
PREFORMED JOINT SEAL



AT CURB, PARAPET, OR WALL
(Showing seal)



AT CURB, PARAPET, OR WALL
(Showing plate)



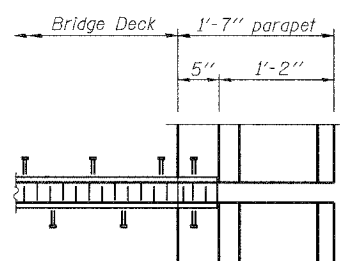
AT SIDEWALK OR MEDIAN*
(Showing plate and seal)

* Shorter plates with a single row of studs at 12" centers may be necessary on medians which are shallower than 9". See manufacturer's recommendation.

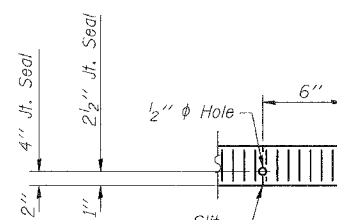
BILL OF MATERIAL

Item	Unit	Total
Bridge Joint System 2 1/2" (Expansion)	Foot	40
Bridge Joint System 4" (Expansion)	Foot	40

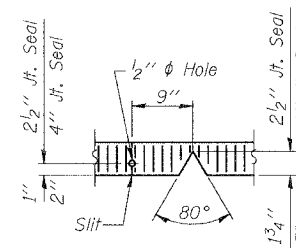
TYPICAL END TREATMENTS



PLAN AT PARAPET



END OF SEAL CUT-OUT



SEAL CUT-OUT AT CURB

(Sheet 1 of 2)
BRIDGE JOINT SYSTEM - EXPANSION
(PREFORMED JOINT SEAL)

REVISIONS	
NAME	DATE

CC Ciorba Group, Inc.
CONSULTING ENGINEERS
5507 NORTH CUMBERLAND AVENUE :: CHICAGO, ILLINOIS 60656 :: (773) 775-1009

VILLAGE OF WINNETKA, ILLINOIS
BRIDGE JOINT SYSTEM-EXPANSION
PINE STREET OVER THE UNION PACIFIC R.R.
R.R. MILE POST 16.89 KENOSHA SUBDIVISION
COOK COUNTY STA. 101+09.96
STRUCTURE NO. 016-8259

SCALE: NONE DRAWN BY: RCD
DATE: MARCH 2006 DESIGN BY:
FILE: 3278 CHECKED BY: SCD