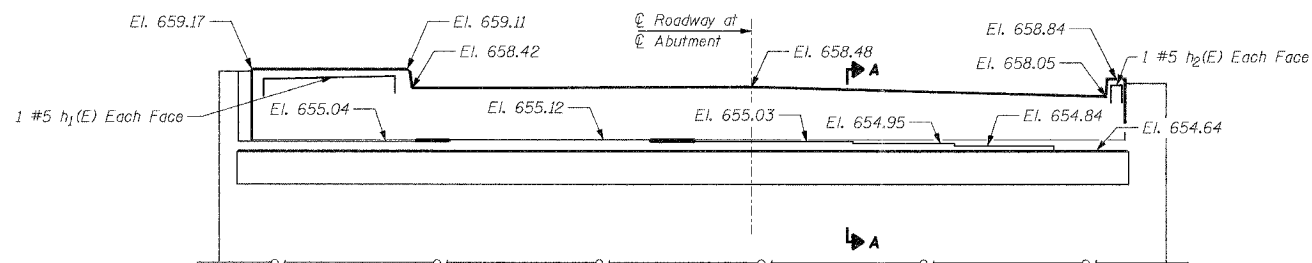


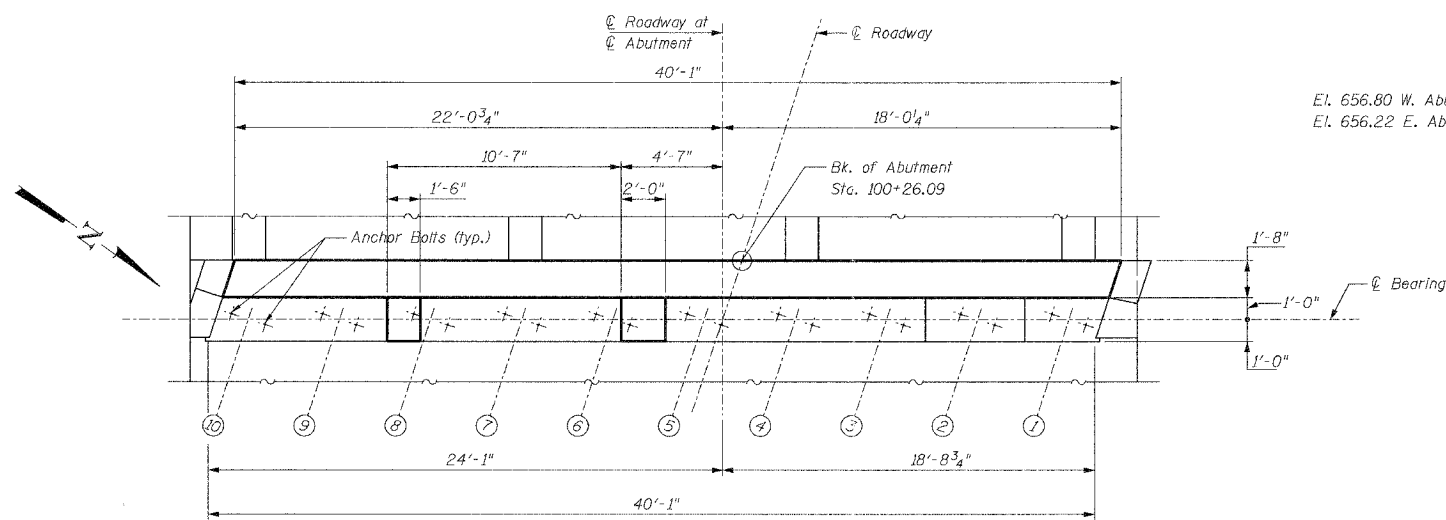
| | | | | |
|-----------------------|----------------|----------|------------------|-----------|
| F.A. RTE. | SECTION | COUNTY | TOTAL SHEETS | SHEET NO. |
| | 00-00094-03-BR | COOK | 69 | 39 |
| STA. | TO STA. | | | |
| FED. ROAD DIST. NO. 1 | | ILLINOIS | FED. AID PROJECT | |
| Sheet SA-20 of SA-23 | | | CONTRACT | 83850 |

*** Existing Reinforcement extending into removed areas shall be blast cleaned, straightened and incorporated into new construction. Cost incidental to "Concrete Removal". Any reinforcement bars that are damaged during concrete removal shall be replaced with an approved bar splicer or anchorage system. Cost incidental to "Concrete Removal".

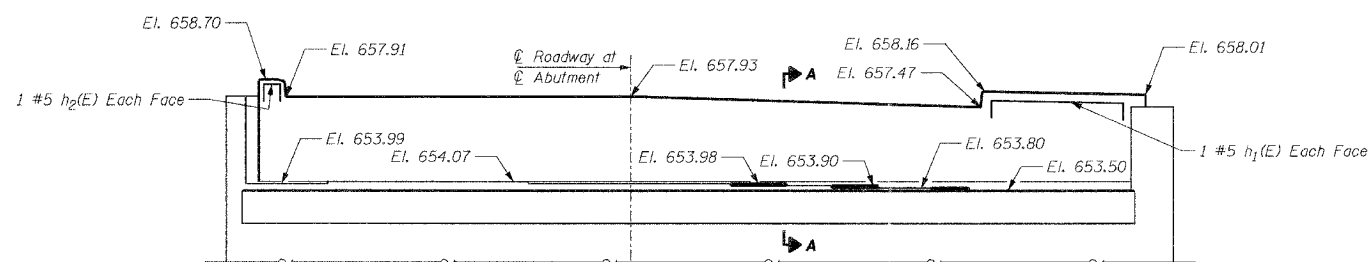
*** Bonded Construction Joint in accordance with Article 503.09(a)(2) of the Standard Specifications.



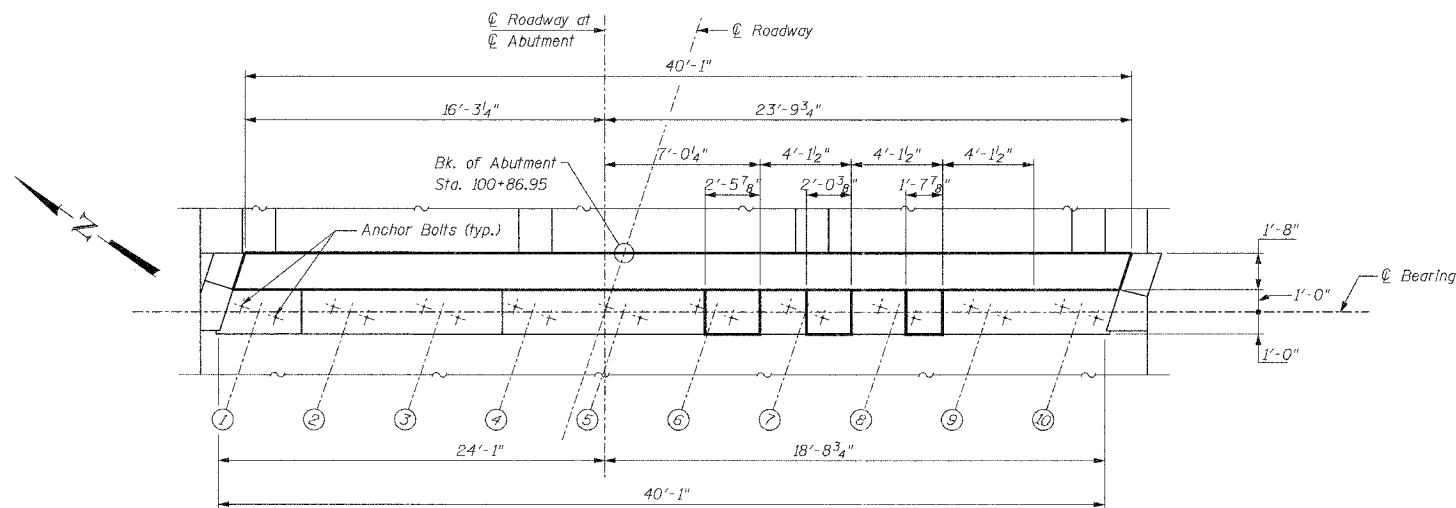
WEST ABUTMENT ELEVATION



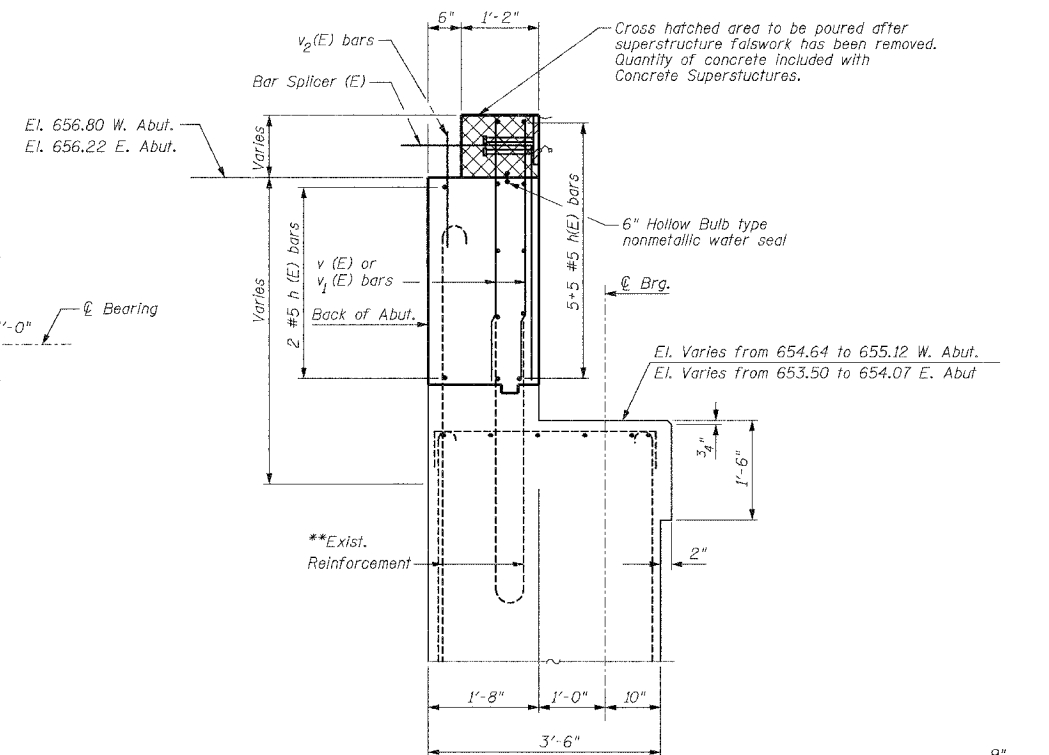
WEST ABUTMENT PLAN



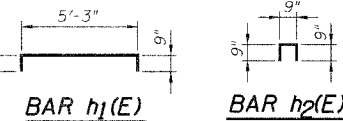
EAST ABUTMENT ELEVATION



EAST ABUTMENT PLAN



SECTION A-A (PROPOSED IMPROVEMENT)



BILL OF MATERIAL

| Bar | No. | Size | Length | Shape | |
|-----------------------------------|-------|------|--------|---------|-------|
| h1(E) | 48 | #5 | 20'-7" | — | |
| h2(E) | 4 | #5 | 6'-9" | — | |
| h2(E) | 4 | #5 | 2'-3" | — | |
| W. Abut. | v1(E) | 80 | #5 | 3'-2" | |
| E. Abut. | v1(E) | 80 | #5 | 3'-8" | |
| | v2(E) | 80 | #5 | 2'-6" | |
| Reinforcement Bars (Epoxy Coated) | | | | Lbs. | 1,847 |
| Concrete Structures | | | | Cu. Yd. | 10.8 |
| Bridge Seal Sealer | | | | Sq. Ft. | 157 |

| REVISIONS | |
|-----------|------|
| NAME | DATE |
| | |
| | |
| | |
| | |
| | |

Ciorba Group, Inc.
CONSULTING ENGINEERS
5507 NORTH CUMBERLAND AVENUE :: CHICAGO, ILLINOIS 60656 :: (773) 775-4009

VILLAGE OF WINNETKA, ILLINOIS
ABUTMENT RECONSTRUCTION DETAILS
PINE STREET OVER THE UNION PACIFIC R.R.
R.R. MILE POST 16.89 KENOSHA SUBDIVISION
COOK COUNTY STA. 101+09.96
STRUCTURE NO. 016-8259

SCALE: NONE DRAWN BY: RCD
DATE: MARCH 2006 DESIGN BY: BWS
FILE: 3278 CHECKED BY: SC0