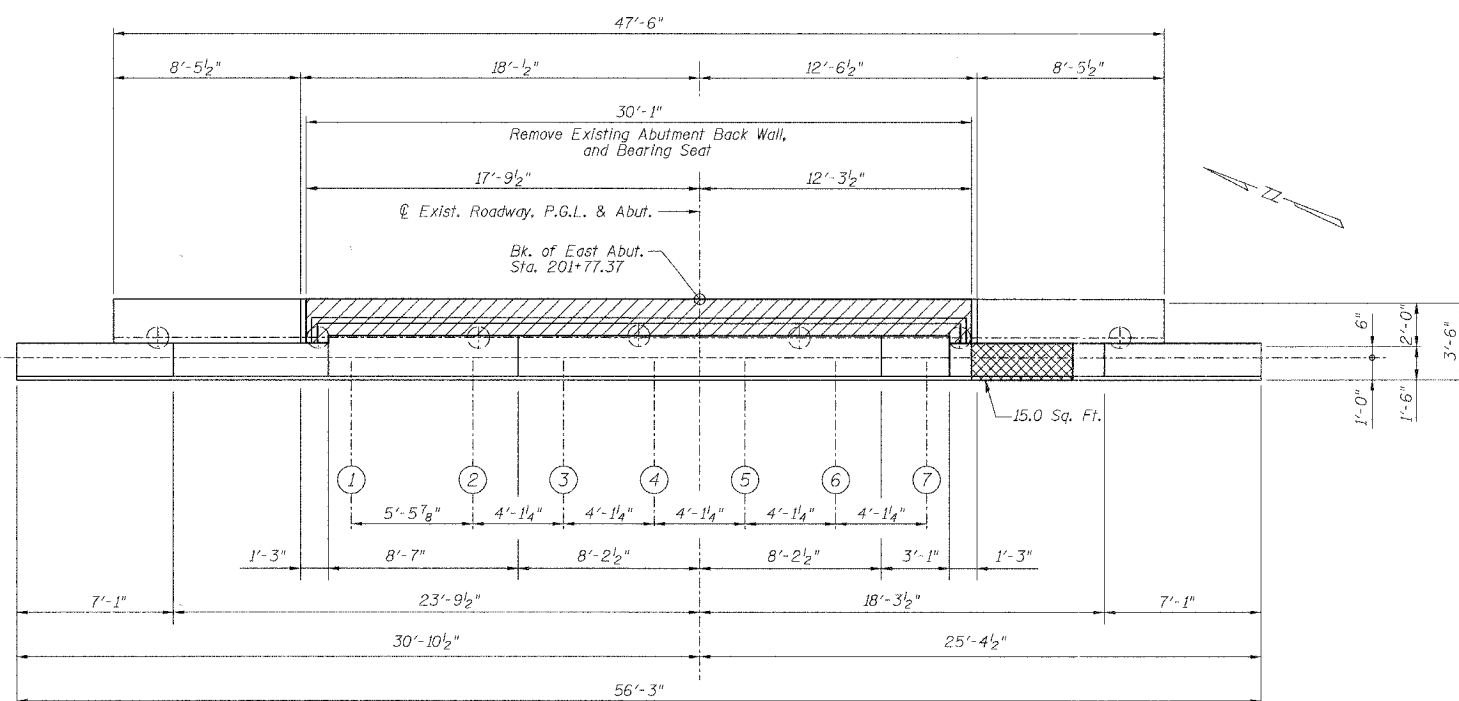
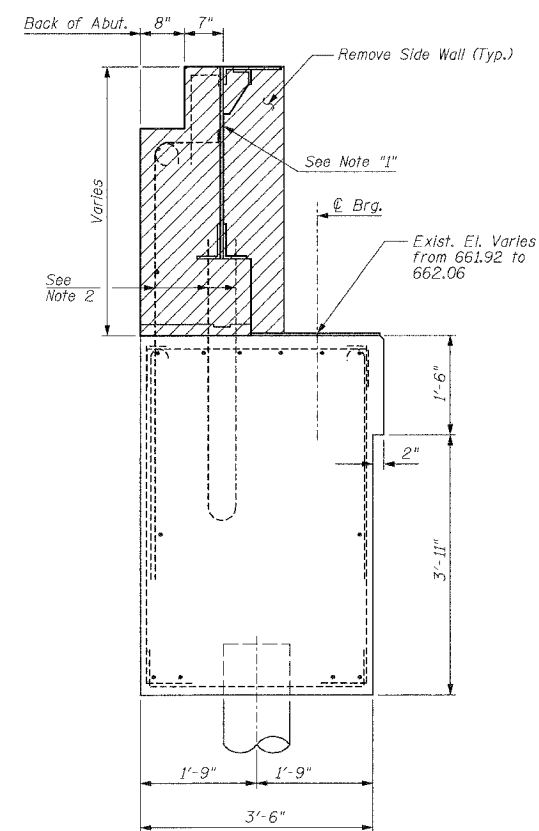


ELEVATION
(Looking east)



TOP PLAN



SECTION A-A
(Existing Condition)

LEGEND:

- Concrete Removal
- Formed Concrete Repair
- Epoxy Crack Sealing

BILL OF MATERIAL

Item	Unit	Quantity
Formed Concrete Repairs	Sq. Ft.	36.0
Concrete Removal	Cu. Yd.	5.9

- NOTES:**
- Removal of existing steel plates and bars in abutment backwall incidental to "Concrete Removal"
 - Existing reinforcement extending into new construction shall be cleaned, straightened and incorporated into new construction. Cost shall be included with Concrete Removal.
 - Repair of the existing abutment shall include but not be limited to the areas shown. The actual areas to be repaired will be determined by the Engineer at the time of construction.
 - Remove backwall to match existing bearing seat elevations.

REVISIONS	
NAME	DATE

Ciorba Group, Inc.
CONSULTING ENGINEERS
5507 NORTH CUMBERLAND AVENUE • CHICAGO, ILLINOIS 60656 • (773) 775-4009

VILLAGE OF WINNETKA, ILLINOIS
EAST ABUTMENT REMOVAL AND REPAIRS
ELDORADO STREET OVER THE UNION PACIFIC R.R.
R.R. MILE POST 17.26 KENOSHA SUBDIVISION
COOK COUNTY STA. 201+07.21
STRUCTURE NO. 016-8260

SCALE: NONE
DATE: MARCH 2006
FILE: 3278

DRAWN BY: RCD
DESIGN BY: BWS
CHECKED BY: SCD