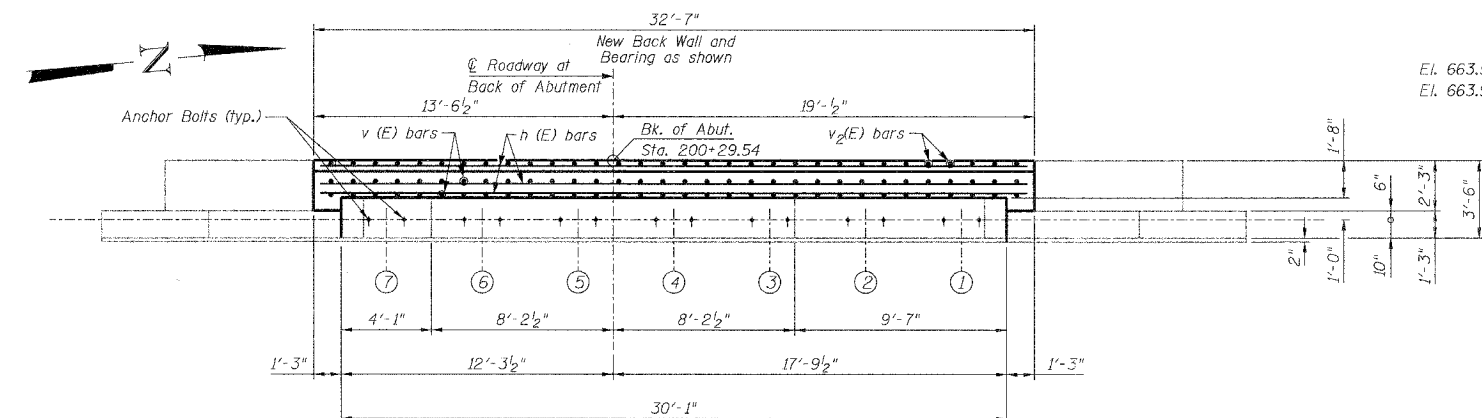
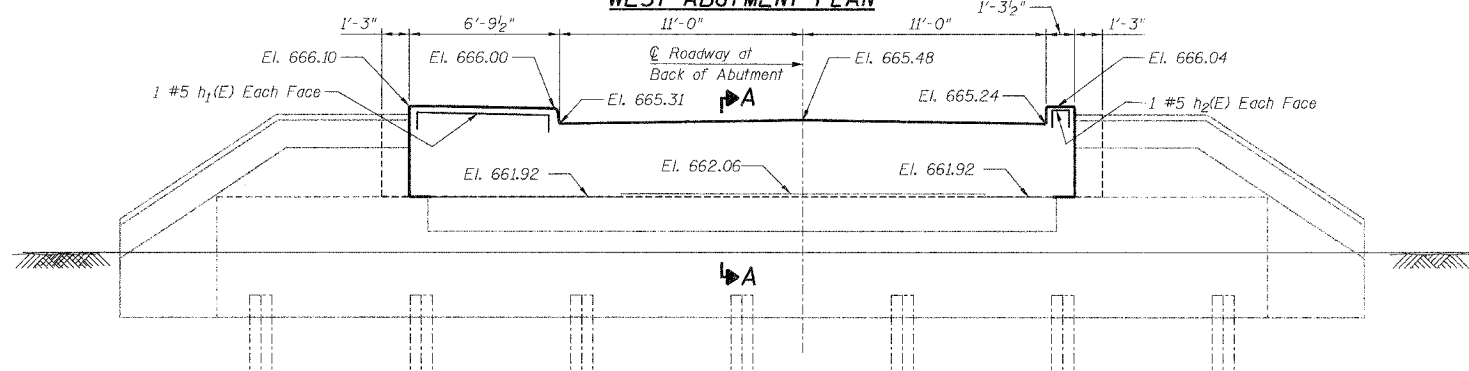


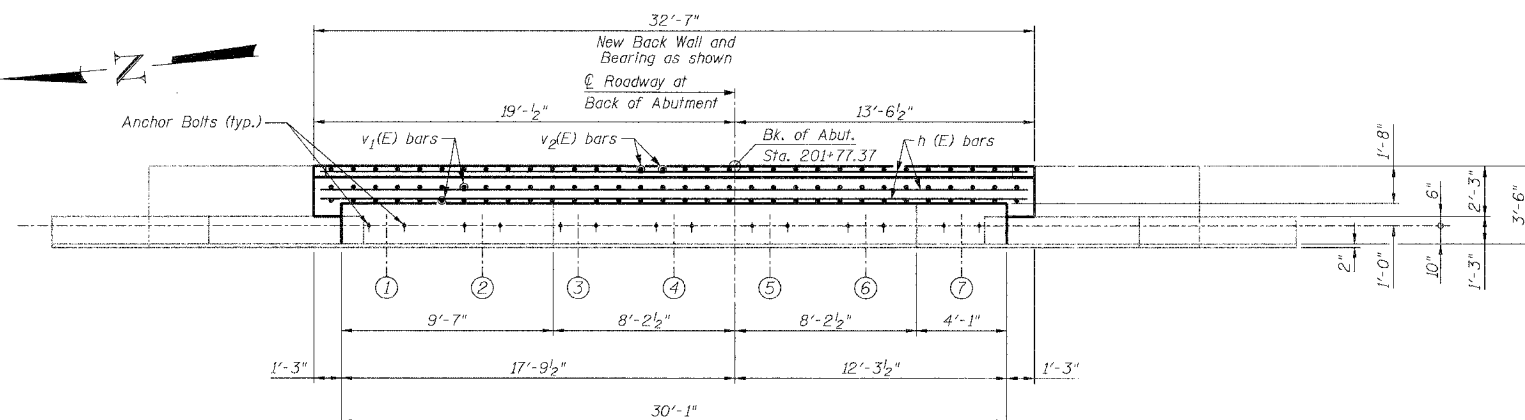
WEST ABUTMENT ELEVATION
(Looking west)



WEST ABUTMENT PLAN



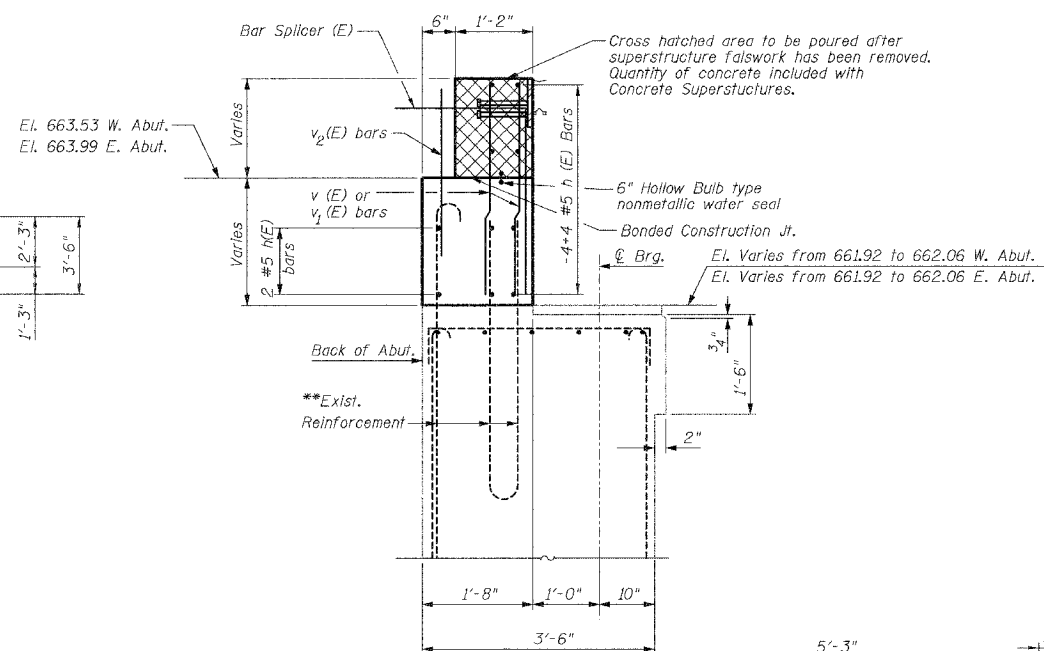
EAST ABUTMENT ELEVATION
(Looking east)



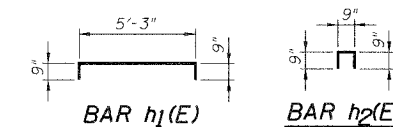
EAST ABUTMENT PLAN

** Existing Reinforcement extending into removed areas shall be blast cleaned, straightened and incorporated into new construction. Cost incidental to "Concrete Removal". Any reinforcement bars that are damaged during concrete removal shall be replaced with an approved bar splicer or anchorage system. Cost incidental to "Concrete Removal".

*** Bonded Construction Joint in accordance with Article 503.09(a)(2) of the Standard Specifications.



SECTION A-A
(Proposed Improvement)



BILL OF MATERIAL

Bar	No.	Size	Length	Shape
h(E)	20	#5	32'-3"	—
h1(E)	4	#5	6'-9"	┌
h2(E)	4	#5	2'-3"	└
v(E)	64	#5	2'-8"	—
v1(E)	64	#5	3'-1"	—
v2(E)	64	#5	2'-6"	—
Reinforcement Bars (Epoxy Coated)		Lbs.		1,260
Concrete Structures		Cu. Yd.		18.3

REVISIONS	
NAME	DATE

Clorba Group, Inc.
CONSULTING ENGINEERS
5507 NORTH CUMBERLAND AVENUE :: CHICAGO, ILLINOIS 60656 :: (773) 775-4009

VILLAGE OF WINNETKA, ILLINOIS
ABUTMENT RECONSTRUCTION DETAILS
ELDORADO STREET OVER THE UNION PACIFIC R.R.
R.R. MILE POST 17.26 KENOSHA SUBDIVISION
COOK COUNTY STA. 201+07.21
STRUCTURE NO. 016-8260

SCALE: NONE
DATE: MARCH 2006
FILE: 3278

DRAWN BY: RCD
DESIGN BY: BWS
CHECKED BY: SCD