

F.A.P. RTE.	SECTION	COUNTY	TOTAL SHEETS	SHEET NO.
361	06-00214-03-BR	KANE	52	01
FED. ROAD DIST. NO. 1		ILLINOIS	FED. AID PROJECT	

# STATE OF ILLINOIS DEPARTMENT OF TRANSPORTATION DIVISION OF HIGHWAYS PLANS FOR PROPOSED FEDERAL AID HIGHWAY

**F.A.P. 361 (STEARNS ROAD CORRIDOR  
WETLAND MITIGATION SITE)  
Section No.: 06-00214-03-BR  
C-91-243-06  
Project No.: HPP-1527(006)  
KANE COUNTY**

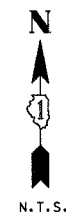
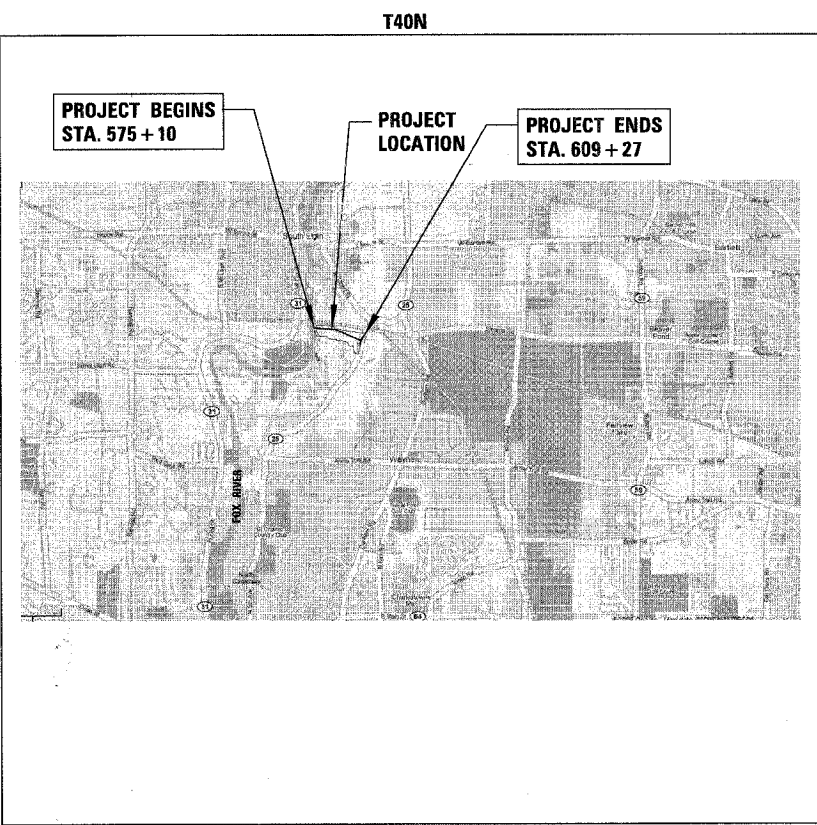


**INDEX OF SHEETS**

SHEET NO.	DESCRIPTION
01	TITLE SHEET
02	GENERAL NOTES
03	SUMMARY OF QUANTITIES
04 - 05	EARTHWORK TABLE
06	TYPICAL SECTIONS
07 - 08	ALIGNMENT, TIES AND BENCHMARKS
09	OVERALL SITE PLAN
10 - 13	EXISTING CONDITIONS PLAN
14 - 17	REMOVAL PLAN
18	DRAINAGE SCHEDULE
19 - 22	GRADING AND DRAINAGE PLAN
23 - 26	LANDSCAPING PLAN
27 - 29	STORM WATER POLLUTION PREVENTION PLAN
30 - 33	SOIL EROSION AND SEDIMENT CONTROL PLAN - PRE-STAGE
34 - 37	SOIL EROSION AND SEDIMENT CONTROL PLAN - STAGE I TO IV
38 - 39	SOIL EROSION AND SEDIMENT CONTROL PLAN DETAILS
40	CONSTRUCTION DETAILS
41	RESTRICTOR DETAIL
42 - 43	CONCRETE END SECTION DETAIL
44 - 52	CROSS SECTIONS

**LIST OF STATE STANDARDS**

STD. NO.	DESCRIPTION
280001-02	TEMPORARY EROSION CONTROL SYSTEMS
542301	PRECAST REINFORCED CONCRETE FLARED END SECTION
542311	GRATING FOR CONCRETE FLARED END SECTION
602001	CATCH BASIN TYPE A
602011	CATCH BASIN TYPE C
602401-01	MANHOLE TYPE A
602601	PRECAST REINFORCED CONCRETE FLAT SLAB TOP
602701-C1	CAST IRON STEPS
604001-02	FRAME AND LIDS TYPE 1
604036-01	GRATE TYPE 8
701806-02	OFF-ROAD OPERATIONS, 2L, 2W, 15' TO 24" FROM PAVEMENT EDGE
702001-06	TRAFFIC CONTROL DEVICES



**LOCATION MAP**  
SCALE: NONE

GROSS LENGTH OF PROJECT = 3,417 LINEAL FEET ( 0.65 MILES)  
NET LENGTH OF PROJECT = 3,417 LINEAL FEET ( 0.65 MILES)  
**PROJECT LOCATED IN: KANE COUNTY**

**TRAFFIC DATA**

EXISTING ADT: NA  
PROPOSED ADT: (2025) NA

POSTED SPEED = NA MPH  
DESIGN SPEED = NA MPH

STATE OF ILLINOIS  
DEPARTMENT OF TRANSPORTATION  
DIVISION OF HIGHWAYS

APPROVED SEPTEMBER 14 20 06  
*[Signature]* COUNTY

PASSED SEPTEMBER 18 20 06  
*[Signature]* LOCAL ROADS ENGINEER

RELEASING FOR BID  
BASED ON LIMITED REVIEW Sept 18 20 06  
*[Signature]* DEPUTY DIRECTOR OF HIGHWAYS, REGION ENGINEER

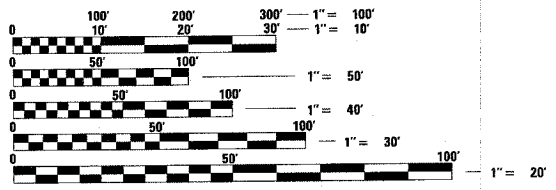
**FINAL  
SEPTEMBER 14, 2006**



MICHAEL E. KERR  
ILLINOIS REGISTRATION No. 062-046642  
EXPIRATION DATE: 11/30/2007  
PRINTED BY AUTHORITY OF THE STATE OF ILLINOIS

**CHRISTOPHER B. BURKE** ENGINEERING LTD.  
9575 West Higgins Road, Suite 600  
Rosemont, Illinois 60018 (847) 823-0500

**JESSICA MILLER** DESIGN ENGINEER  
201 W. CENTER COURT  
SCHAUMBURG, ILLINOIS 60196-1096  
(847) 705-4487



FULL SIZE PLANS HAVE BEEN PREPARED USING STANDARD ENGINEERING SCALES. REDUCED SIZED PLANS WILL NOT CONFORM TO STANDARD SCALES. IN MAKING MEASUREMENTS ON REDUCED PLANS, THE ABOVE SCALES MAY BE USED.

J.U.L.I.E.  
JOINT UTILITY LOCATION INFORMATION FOR EXCAVATION  
1-800-892-0123

**CONTRACT NO. 83862**