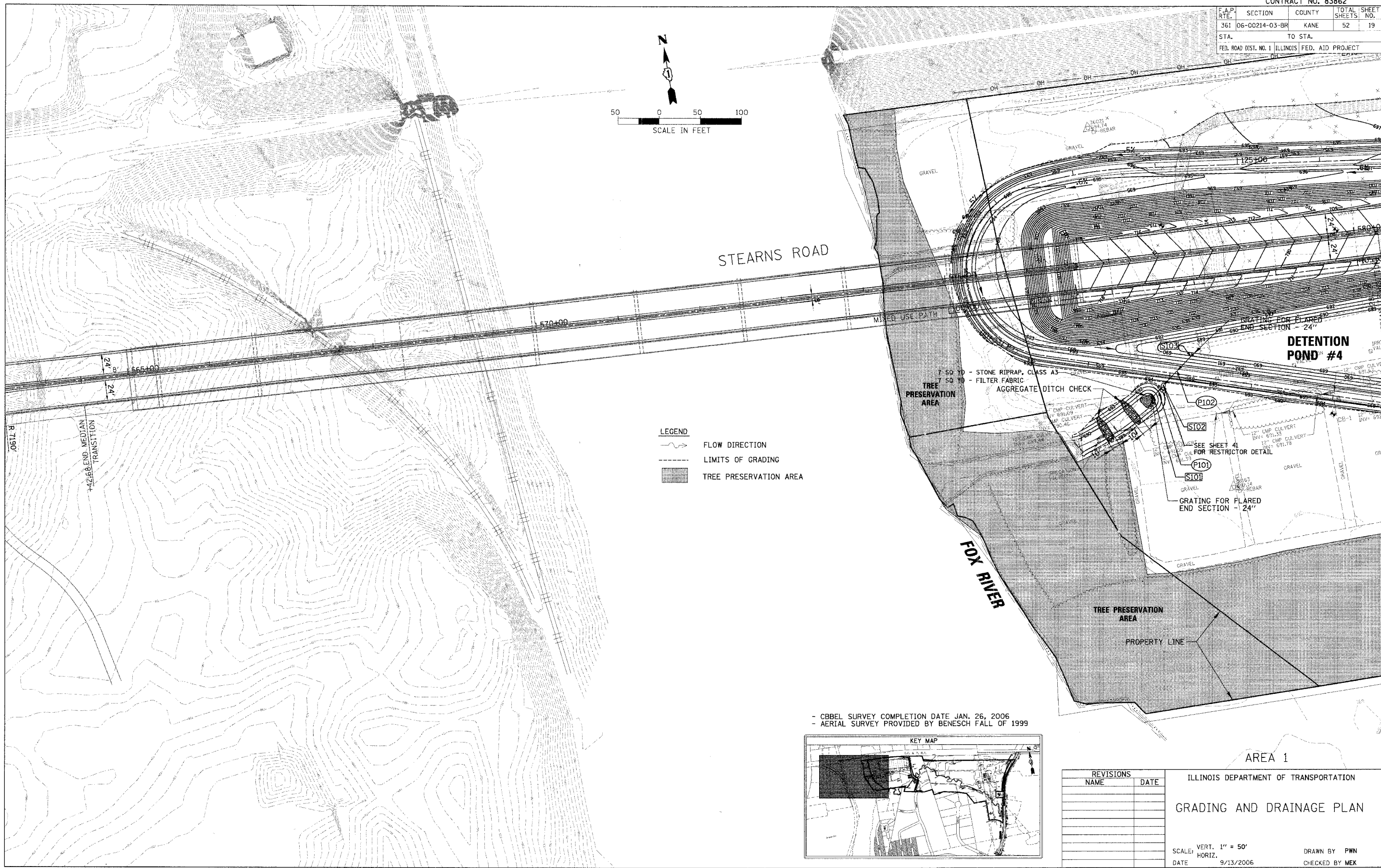
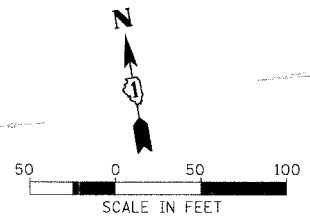


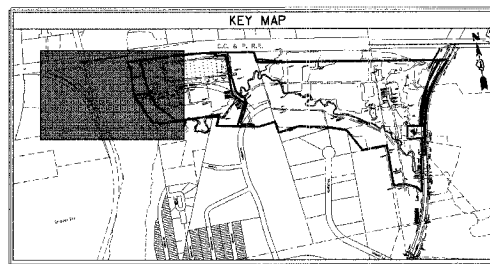
CONTRACT NO. 83862

F.A.P. RYE.	SECTION	COUNTY	TOTAL SHEETS	SHEET NO.
361	06-00214-03-BR	KANE	52	19
STA.		TO STA.		
FED. ROAD DIST. NO. 1 ILLINOIS FED. AID PROJECT				



- LEGEND**
- FLOW DIRECTION
 - LIMITS OF GRADING
 - TREE PRESERVATION AREA

- CBBEL SURVEY COMPLETION DATE JAN. 26, 2006
 - AERIAL SURVEY PROVIDED BY BENESCH FALL OF 1999



REVISIONS		ILLINOIS DEPARTMENT OF TRANSPORTATION
NAME	DATE	
		GRADING AND DRAINAGE PLAN SCALE: VERT. 1" = 50' HORIZ. 9/13/2006 DRAWN BY PWN CHECKED BY MEK

CHRISTOPHER B. BURKE ENGINEERING, LTD.
 9575 W. Higgins Road, Suite 600
 Rosemont, Illinois 60018
 (847) 923-0500



PLOT DATE = 9/13/2006
 FILE NAME = N:\work\countys\1471\DRD\AC\1\PLN\81471.dwg
 USER NAME = RUSER

AREA 1