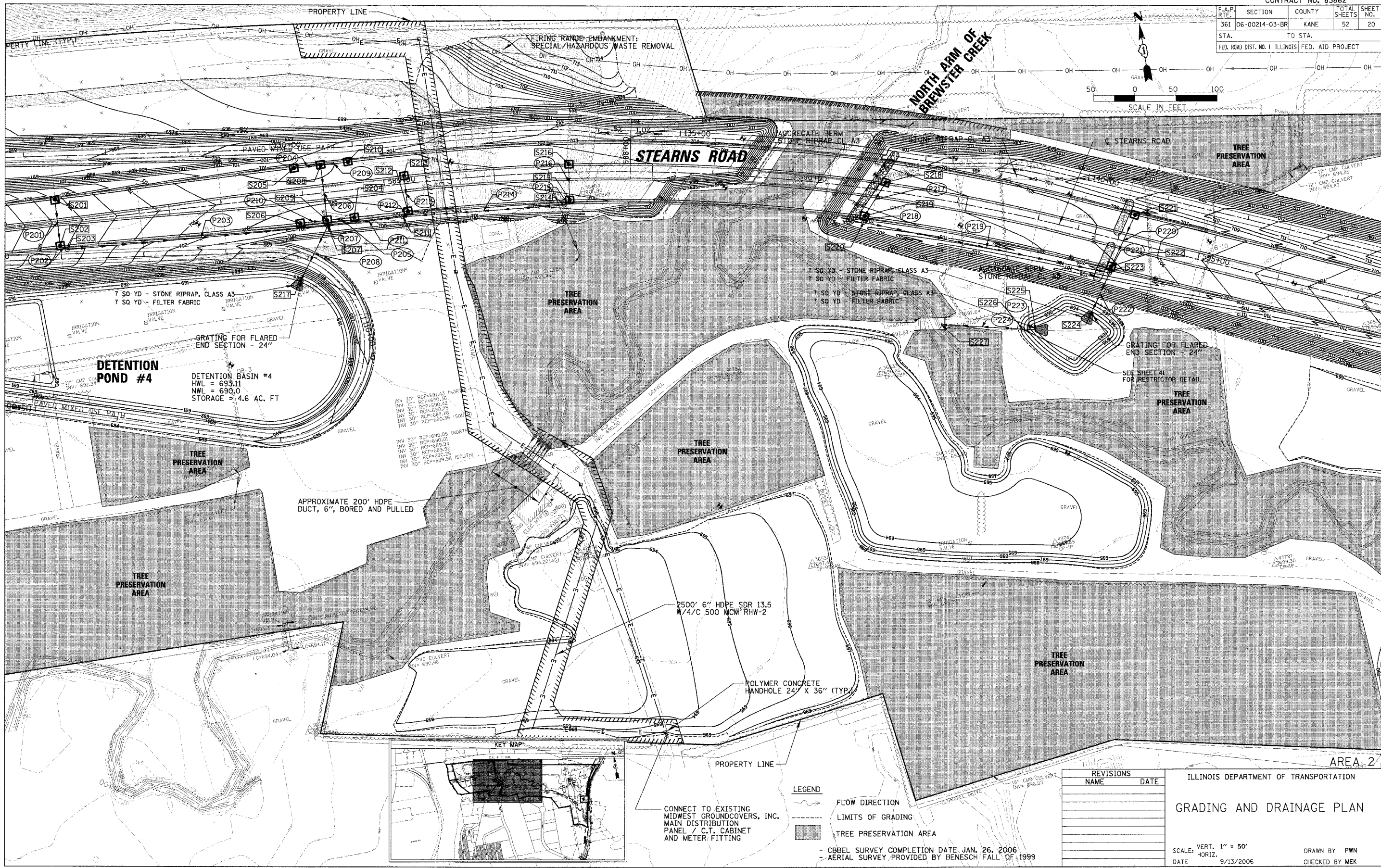
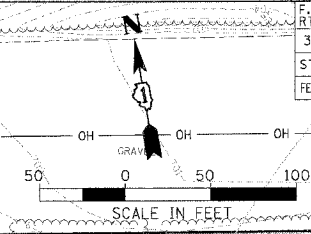


CONTRACT NO. 83862

F.A.P. RTE.	SECTION	COUNTY	TOTAL SHEETS	SHEET NO.
361	06-00214-03-BR	KANE	52	20
STA.		TO STA.		
FED. ROAD DIST. NO. 1 ILLINOIS FED. AID PROJECT				



CHRISTOPHER B. BURKE ENGINEERING, LTD.
 9575 W. Higgins Road, Suite 600
 Rosemont, Illinois 60018
 (847) 823-0500



PLOT DATE = 9/13/2006
 FILE NAME = N:\kennedycor\06-214\GRD\CD\1\NPL\B1471_02.DWG
 USER NAME = BURKE

REVISIONS	NAME	DATE

ILLINOIS DEPARTMENT OF TRANSPORTATION
GRADING AND DRAINAGE PLAN
 SCALE: VERT. 1" = 50'
 HORIZ. DATE 9/13/2006
 DRAWN BY PWN
 CHECKED BY MEK

- LEGEND**
- FLOW DIRECTION
 - LIMITS OF GRADING
 - TREE PRESERVATION AREA

CONNECT TO EXISTING
 MIDWEST GROUNDCOVERS, INC.
 MAIN DISTRIBUTION
 PANEL / C.T. CABINET
 AND METER FITTING

- CBBEL SURVEY COMPLETION DATE JAN. 26, 2006
 - AERIAL SURVEY PROVIDED BY BENESCH FALL OF 1999

AREA 2