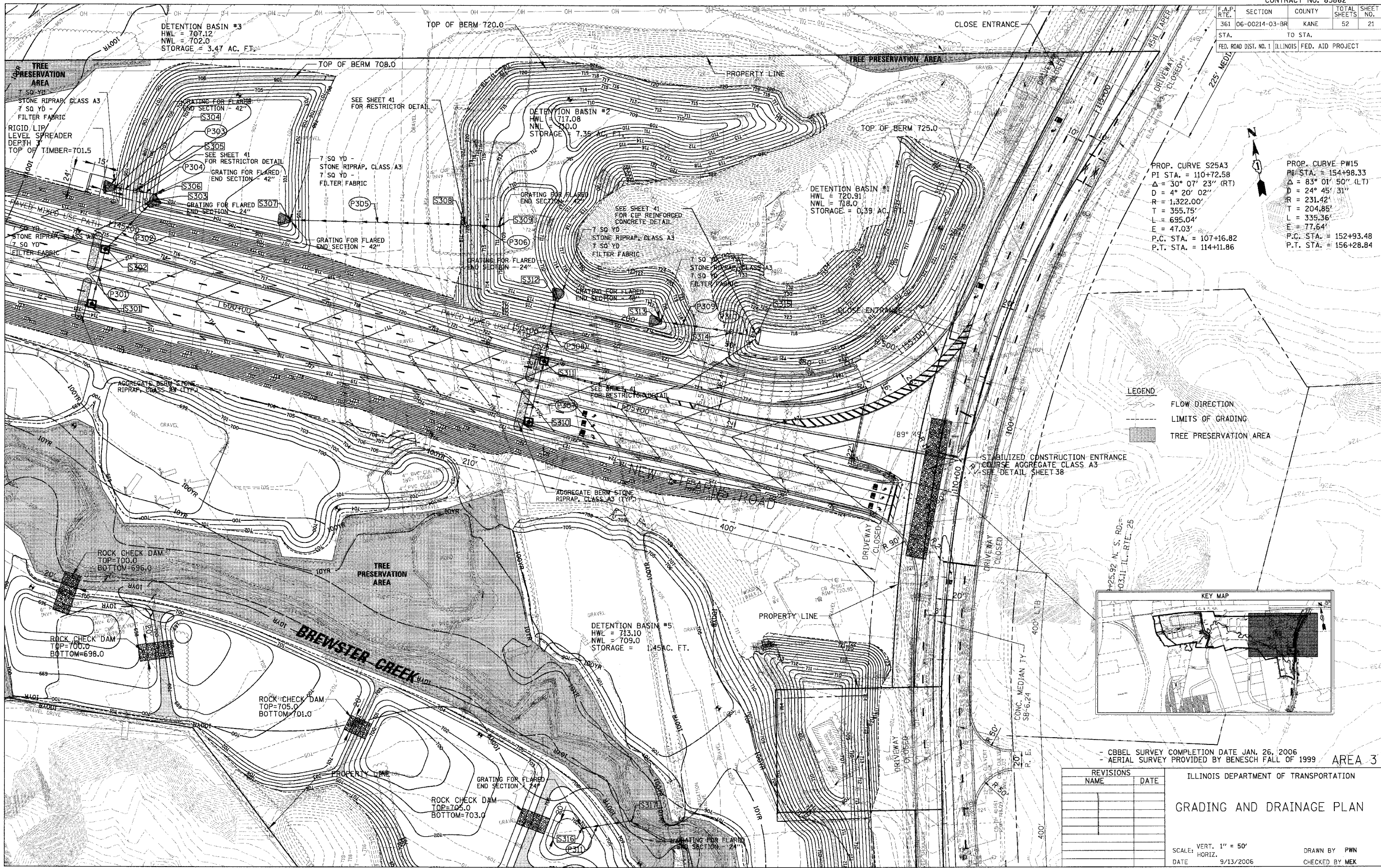


CONTRACT NO. 83862

F.A.P. RTE.	SECTION	COUNTY	TOTAL SHEETS	SHEET NO.
361	06-00214-03-BR	KANE	52	21
STA.		TO STA.		
FED. ROAD DIST. NO. 1 ILLINOIS FED. AID PROJECT				

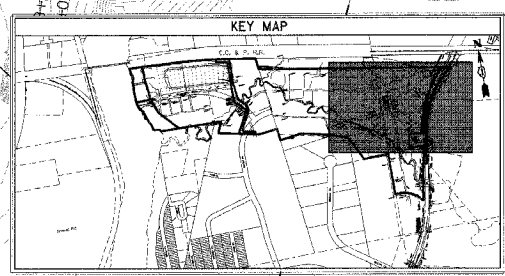


PROP. CURVE S25A3
 PI STA. = 110+72.58
 $\Delta = 30^{\circ} 07' 23''$ (RT)
 $D = 4^{\circ} 20' 02''$
 $R = 1,322.00'$
 $T = 355.75'$
 $L = 695.04'$
 $E = 47.03'$
 P.C. STA. = 107+16.82
 P.T. STA. = 114+11.86

PROP. CURVE PW15
 PI STA. = 154+98.33
 $\Delta = 83^{\circ} 01' 50''$ (LT)
 $D = 24^{\circ} 45' 31''$
 $R = 231.42'$
 $T = 204.85'$
 $L = 335.36'$
 $E = 77.64'$
 P.C. STA. = 152+93.48
 P.T. STA. = 156+28.84

LEGEND

- FLOW DIRECTION
- - - LIMITS OF GRADING
- TREE PRESERVATION AREA



- CBEL SURVEY COMPLETION DATE JAN. 26, 2006
 - AERIAL SURVEY PROVIDED BY BENESCH FALL OF 1999

REVISIONS	
NAME	DATE

ILLINOIS DEPARTMENT OF TRANSPORTATION

GRADING AND DRAINAGE PLAN

SCALE: VERT. 1" = 50'
 HORIZ. 1" = 100'

DATE: 9/13/2006

DRAWN BY: PWN
 CHECKED BY: MEK

CHRISTOPHER B. BURKE ENGINEERING, LTD.
 6975 W. Higgins Road, Suite 600
 Rosemont, Illinois 60018
 (847) 823-0500



PLOT DATE: 9/13/2006
 FILE NAME: N:\In\recounting\814710100\Civil\PLN\A171.BLDG1A
 USER NAME: C. BURKE