

F.A.P. NO.	SECTION	COUNTY	TOTAL SHEETS	SHEET NO.
361	06-00214-03-BR	KANE	52	23
STA.		TO STA.		
FED. ROAD DIST. NO. 1 ILLINOIS FED. AID PROJECT				

NOTES:

- CONTRACTOR SHALL PROVIDE PROTECTION FROM GESE AND OTHER FOWL TO PERENNIAL PLANTS, WETLAND EMERGENT TYPE AND PERENNIAL PLANTS, WETLAND TYPE WITH PLANTER FENCE (SPECIAL) ..
- ALL SEEDING SHALL RECEIVE STRAW MULCH STABILIZATION, AT THE RATE OF 1.5 TONS/ACRE.
- SHADY FLOODPLAIN PLANTINGS SHALL CONSIST OF THE FOLLOWING:

SHADY FLOODPLAIN SHRUBS:

SCIENTIFIC NAME	COMMON NAME	STEMS/ACRE
ARONIA PRUNIFOLIA	BLACKCHOKEBERRY	15
CEPHALANTHUS OCCIDENTALIS	BUTTONBUSH	30
CORNUS OBLIQUA	BLUE FRUITED DOGWOOD	30
CORNUS STOLONIFERA	RED-OSIER DOGWOOD	20
VIBURNUM LENTAGO	NANNYBERRY	15
VIBURNUM TRILOBUM	AMERICAN CRANBERRY	15

SHADY FLOODPLAIN TREES:

SCIENTIFIC NAME	COMMON NAME	STEMS/ACRE
CELTIS OCCIDENTALIS	HACKBERRY	8
CORNUS ALTERNIFOLIA	PAGODA DOGWOOD	8
FRAXINUS PENNSYLVANICA SUBINTERRIGIMA	GREEN ASH	35
QUERCUS BICOLOR	SWAMP WHITE OAK	15
QUERCUS MACROCARPA	BURROAK	25
SALIX NIGRA	BLACK WILLOW	5

4. PRAIRIE PLANTINGS SHALL CONSIST OF THE FOLLOWING:

PRAIRIE TREES:

SCIENTIFIC NAME	COMMON NAME	SHRUBS/ACRE
ARONIA PRUNIFOLIA	BLACK CHOKEBERRY	8
CEPHALANTHUS OCCIDENTALIS	BUTTONBUSH	8
CORNUS OBLIQUA	BLUE FRUITED DOGWOOD	8
CORNUS STOLONIFERA	RED-OSIER DOGWOOD	8
VIBURNUM LENTAGO	NANNYBERRY	8

PRAIRIE SHRUBS:

SCIENTIFIC NAME	COMMON NAME	TREES/ACRE
BETULA NIGRA	RIVER BIRCH	2
CELTIS OCCIDENTALIS	HACKBERRY	2
FRAXINUS PENNSYLVANICA	GREEN ASH	2
QUERCUS BICOLOR	SWAMP WHITE OAK	1
QUERCUS MACROCARPA	BURR OAK	1
SALIX NIGRA	BLACKWILLOW	1

5. WET TO MESIC SAVANNA PLANTINGS SHALL CONSIST OF THE FOLLOWINGS:

WET TO MESIC SAVANNA

SCIENTIFIC NAME	COMMON NAME	Stems/Acre
CRATAEGUS MOLLIS	DOWNY HAWTHORN	15
FRAXINUS AMERICANA	WHITE ASH	15
MALUS IDENSIS	PRAIRIE CRAB APPLE	15
OSTRYA VIRGINIANA	AMERICAN HOPHORNBEAM	40
QUERCUS MACROCARPA	BUR OAK	40
QUERCUS RUBRA	RED OAK	40

6. THE FOLLOWING ARE NOMINAL QUANTITIES AND SHALL BE USED ONLY WHEN DIRECTED BY THE ENGINEER:

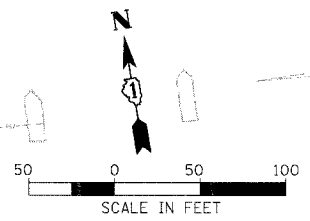
- INTERSEEDING, CLASS 4 (MODIFIED) SEDGE MEADOW
- INTERSEEDING, CLASS 4 (MODIFIED) EMERGENT AQUATIC
- INTERSEEDING, CLASS 5 OR 6 (MODIFIED) SEDGE MEADOW
- INTERSEEDING, CLASS 6 OR 6 (MODIFIED) EMERGENT AQUATIC
- SELECTIVE CLEARING
- WEED CONTROL, NON-SELECTIVE AND NON-RESIDUAL

7. MULCH, METHOD 2 SHALL BE USED WITH TEMPORARY EROSION CONTROL SEEDING AFTER FINAL GRADE HAS BEEN REACHED. PROCEDURE 1 WILL NOT BE PERMITTED.

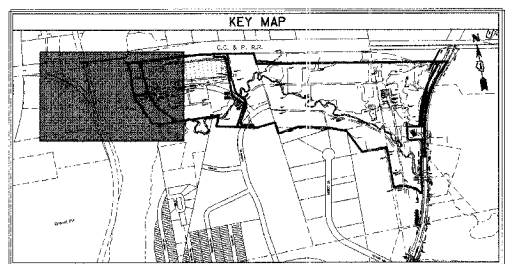
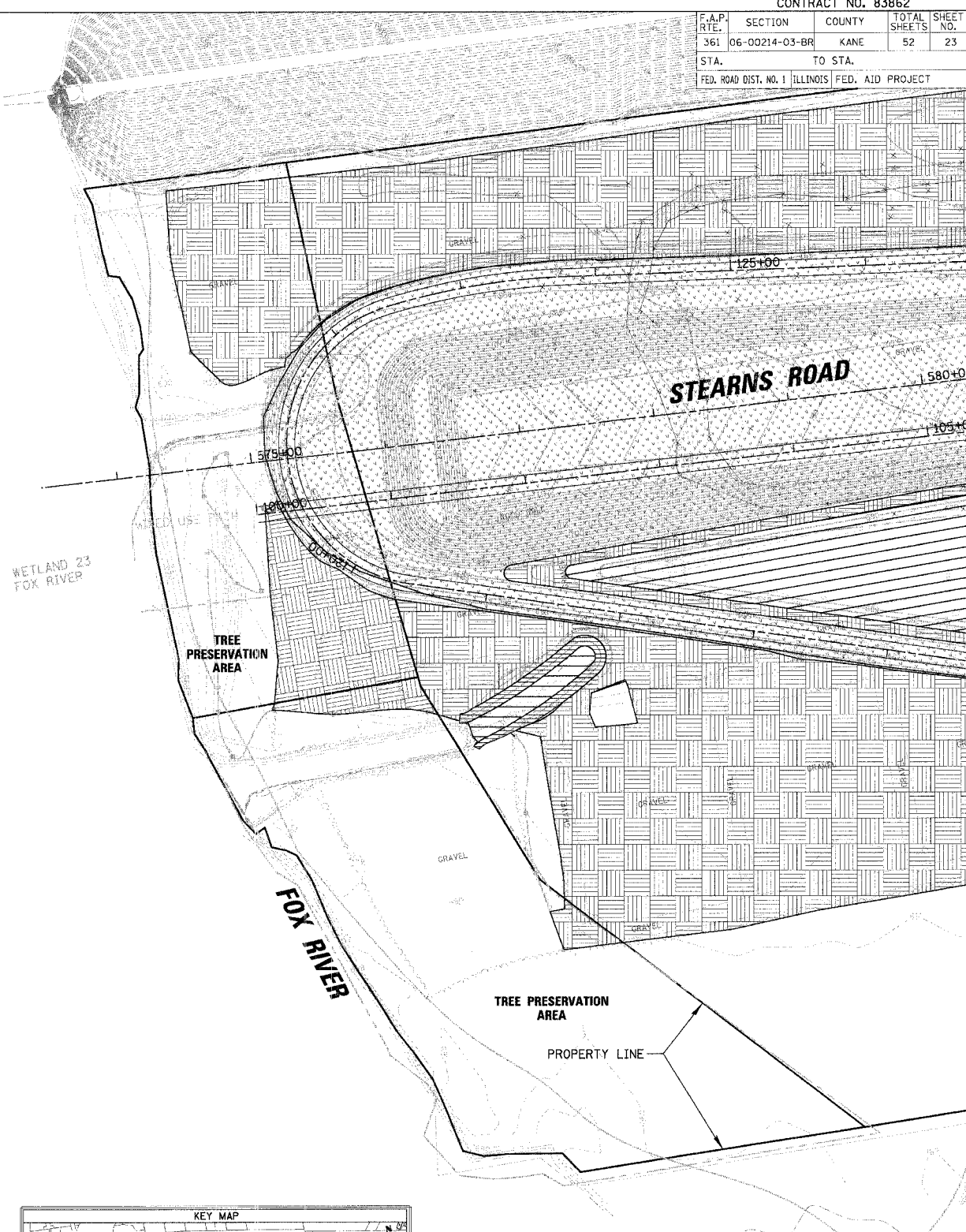
8. THE CONTRACTOR SHALL GIVE A MINIMUM 72-HOUR NOTICE TO THE ENGINEER TO ALLOW ENOUGH TIME FOR THE LAYOUT OF THE PERENNIAL PLANTINGS, TREES AND SHRUBS.

LEGEND

- SEEDING, CLASS 7
- SEEDING, CLASS 2A
- SEEDING, CLASS 4 (MODIFIED) MESIC PRAIRIE AND SEEDING, CLASS 5 (MODIFIED) MESIC PRAIRIE WITH TREES AND SHRUBS (SEE NOTE 4)
- SEEDING, CLASS 4 (MODIFIED) WET TO MESIC PRAIRIE AND SEEDING, CLASS 5 (MODIFIED) WET TO MESIC PRAIRIE WITH TREES AND SHRUBS (SEE NOTE 4)
- SEEDING, CLASS 4 (MODIFIED) WET PRAIRIE AND SEEDING, CLASS 5 (MODIFIED) WET PRAIRIE WITH TREES AND SHRUBS (SEE NOTE 4)
- SEEDING, CLASS 4 (MODIFIED) WET TO MESIC SAVANNA, SEEDING, CLASS 5 (MODIFIED) WET TO MESIC SAVANNA AND TREE AND SHRUBS (SEE NOTE 5)
- SEEDING, CLASS 4 (MODIFIED) SHADY FLOODPLAIN AND SEEDING, CLASS 5 (MODIFIED) SHADY FLOODPLAIN WITH SHADY FLOODPLAIN PLANTINGS (SEE NOTE 3)
- SEEDING, CLASS 4 (MODIFIED) DETENTION BASIN, SEEDING, CLASS 5 (MODIFIED) DETENTION BASIN AND PERENNIAL PLANTS, WETLAND TYPE (DETENTION BASIN PLANTINGS)
- SEEDING, CLASS 4 (MODIFIED) SEDGE MEADOW AND SEEDING, CLASS 5 (MODIFIED) SEDGE MEADOW
- SEEDING, CLASS 4 (MODIFIED) EMERGENT AQUATIC AND SEEDING, CLASS 5 (MODIFIED) EMERGENT AQUATIC
- PERENNIAL PLANTS, WETLAND EMERGENT TYPE (SUBMERGED AQUATIC PLANTINGS)



FOX RIVER



REVISIONS	DATE

ILLINOIS DEPARTMENT OF TRANSPORTATION
LANDSCAPING PLAN
 SCALE: VERT. 1" = 50'
 HORIZ. DATE 9/13/2006
 DRAWN BY RCB
 CHECKED BY MEK

CHRISTOPHER B. BURKE ENGINEERING, LTD.
 9575 W. Higgins Road, Suite 600
 Rosemont, Illinois 60018
 (847) 823-0500



PLOT DATE = 9/13/2006
 PLOT SCALE = 1" = 50'
 USER NAME = USER8