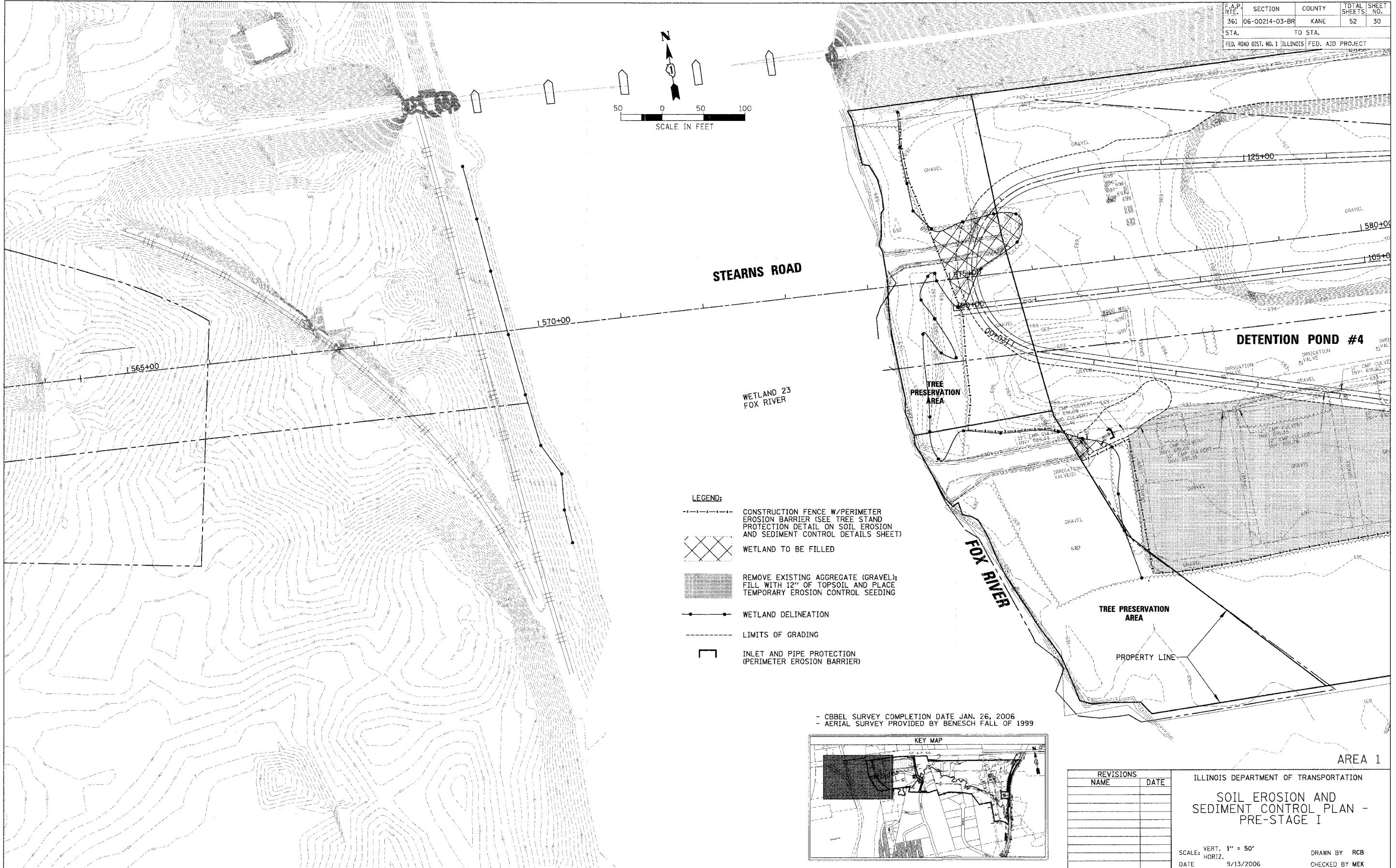
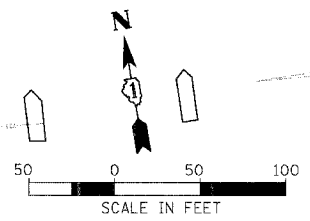


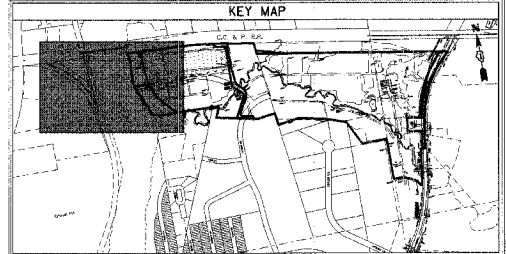
CONTRACT NO. 83862

F.A.P. NO.	SECTION	COUNTY	TOTAL SHEETS	SHEET NO.
361	06-00214-03-BR	KANE	52	30
STA.	TO STA.			
FED. ROAD DIST. NO. 1 ILLINOIS FED. AID PROJECT				



- LEGEND:**
- CONSTRUCTION FENCE W/PERIMETER EROSION BARRIER (SEE TREE STAND PROTECTION DETAIL ON SOIL EROSION AND SEDIMENT CONTROL DETAILS SHEET)
 - WETLAND TO BE FILLED
 - REMOVE EXISTING AGGREGATE (GRAVEL); FILL WITH 12" OF TOPSOIL AND PLACE TEMPORARY EROSION CONTROL SEEDING
 - WETLAND DELINEATION
 - LIMITS OF GRADING
 - INLET AND PIPE PROTECTION (PERIMETER EROSION BARRIER)

- CBEL SURVEY COMPLETION DATE JAN. 26, 2006
 - AERIAL SURVEY PROVIDED BY BENESCH FALL OF 1999



REVISIONS NAME	DATE

ILLINOIS DEPARTMENT OF TRANSPORTATION
SOIL EROSION AND SEDIMENT CONTROL PLAN - PRE-STAGE I
 SCALE: VERT. 1" = 50'
 HORIZ. DATE 9/13/2006
 DRAWN BY RCB
 CHECKED BY MEK

AREA 1

CHRISTOPHER B. BURKE ENGINEERING, LTD.
 9575 W. Higgins Road, Suite 600
 Rosemont, Illinois 60018
 (847) 823-0500



PLOT DATE = 9/13/2006
 PLOT SCALE = 1" = 50'
 USER NAME = RCB