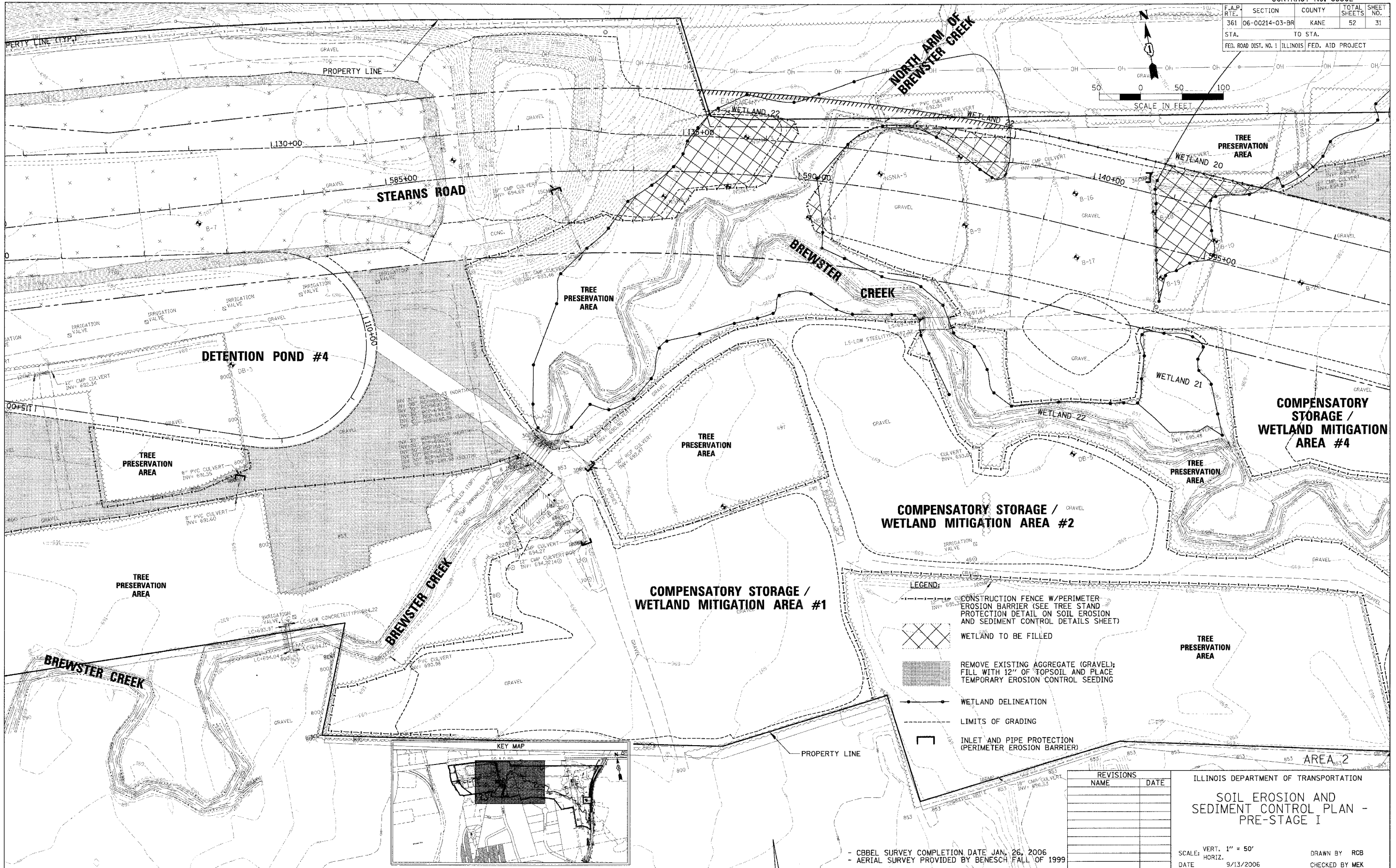
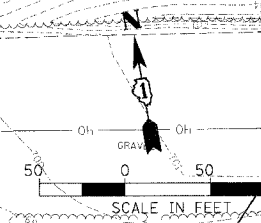


CONTRACT NO. 83862

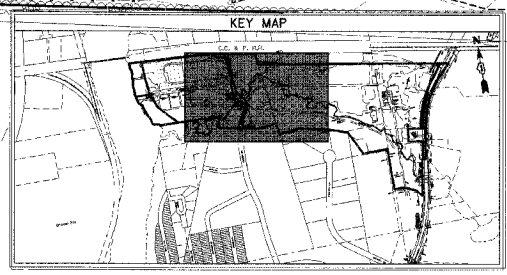
F.A.P. RTE.	SECTION	COUNTY	TOTAL SHEETS	SHEET NO.
361	06-00214-03-BR	KANE	52	31
STA. TO STA.		FED. ROAD DIST. NO. 1 ILLINOIS FED. AID PROJECT		



CHRISTOPHER B. BURKE ENGINEERING, LTD.  
 9575 W. Higgins Road, Suite 600  
 Rosemont, Illinois 60018  
 (847) 822-0500



PLOT DATE = 9/13/2006  
 PLOT NAME = N:\Users\cburke\My Documents\83862\83862\_31.dwg  
 USER NAME = CBURKE



- LEGEND:**
- CONSTRUCTION FENCE W/PERIMETER EROSION BARRIER (SEE TREE STAND PROTECTION DETAIL ON SOIL EROSION AND SEDIMENT CONTROL DETAILS SHEET)
  - WETLAND TO BE FILLED
  - REMOVE EXISTING AGGREGATE (GRAVEL); FILL WITH 12" OF TOPSOIL AND PLACE TEMPORARY EROSION CONTROL SEEDING
  - WETLAND DELINEATION
  - LIMITS OF GRADING
  - INLET AND PIPE PROTECTION (PERIMETER EROSION BARRIER)

REVISIONS	DATE

ILLINOIS DEPARTMENT OF TRANSPORTATION  
**SOIL EROSION AND SEDIMENT CONTROL PLAN - PRE-STAGE I**  
 SCALE: VERT. 1" = 50'  
 DATE 9/13/2006  
 DRAWN BY RCB  
 CHECKED BY MEK

- CBBEL SURVEY COMPLETION DATE JAN. 26, 2006  
 - AERIAL SURVEY PROVIDED BY BENESCH FALL OF 1999