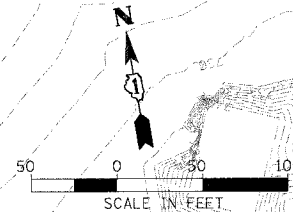
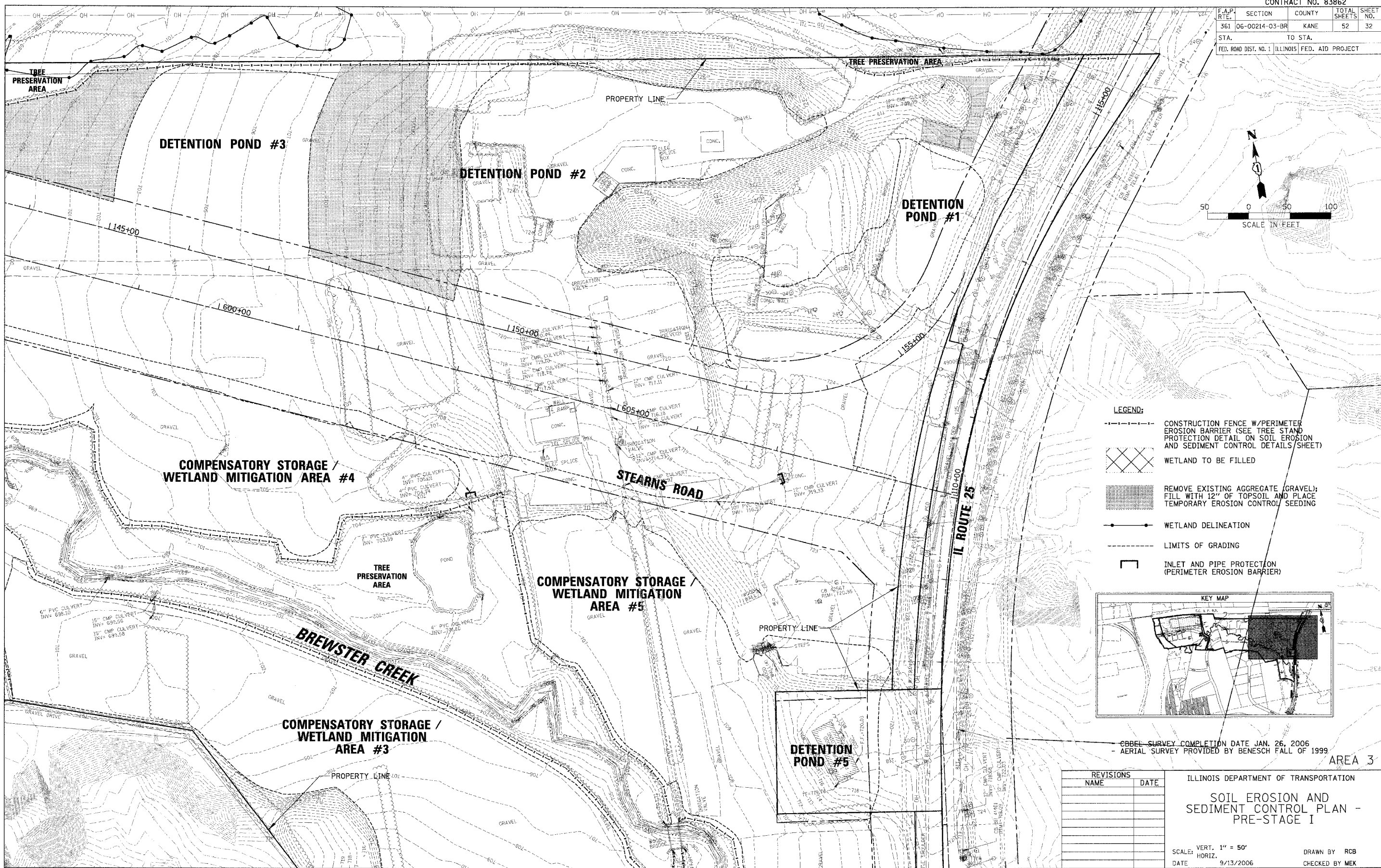
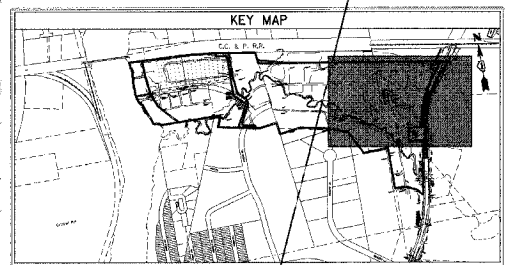


CONTRACT NO. 83862

F.A.P. RITE	SECTION	COUNTY	TOTAL SHEETS	SHEET NO.
361	06-00214-03-BR	KANE	52	32
STA.		TO STA.		
FED. ROAD DIST. NO. 1 ILLINOIS FED. AID PROJECT				



- LEGEND:**
- CONSTRUCTION FENCE W/PERIMETER EROSION BARRIER (SEE TREE STAND PROTECTION DETAIL ON SOIL EROSION AND SEDIMENT CONTROL DETAILS SHEET)
 - WETLAND TO BE FILLED
 - REMOVE EXISTING AGGREGATE (GRAVEL); FILL WITH 12" OF TOPSOIL AND PLACE TEMPORARY EROSION CONTROL/ SEEDING
 - WETLAND DELINEATION
 - LIMITS OF GRADING
 - INLET AND PIPE PROTECTION (PERIMETER EROSION BARRIER)



- CBBL SURVEY COMPLETION DATE JAN. 26, 2006
 - AERIAL SURVEY PROVIDED BY BENESCH FALL OF 1999

AREA 3

REVISIONS	NAME	DATE

ILLINOIS DEPARTMENT OF TRANSPORTATION
SOIL EROSION AND SEDIMENT CONTROL PLAN - PRE-STAGE I

SCALE: VERT. 1" = 50'
 HORIZ. 1" = 100'
 DATE 9/13/2006
 DRAWN BY RCB
 CHECKED BY MEK

CHRISTOPHER B. BURKE ENGINEERING, LTD.
 9575 W. Higgins Road, Suite 600
 Rosemont, Illinois 60018
 (847) 822-0500



PLOT DATE = 9/13/2006
 PLOT NAME = N:\New\m00114\141701RD\Civil\EXH.2\1417_83LEP
 PLOT SCALE = 1" = 100'
 USER NAME = RCB