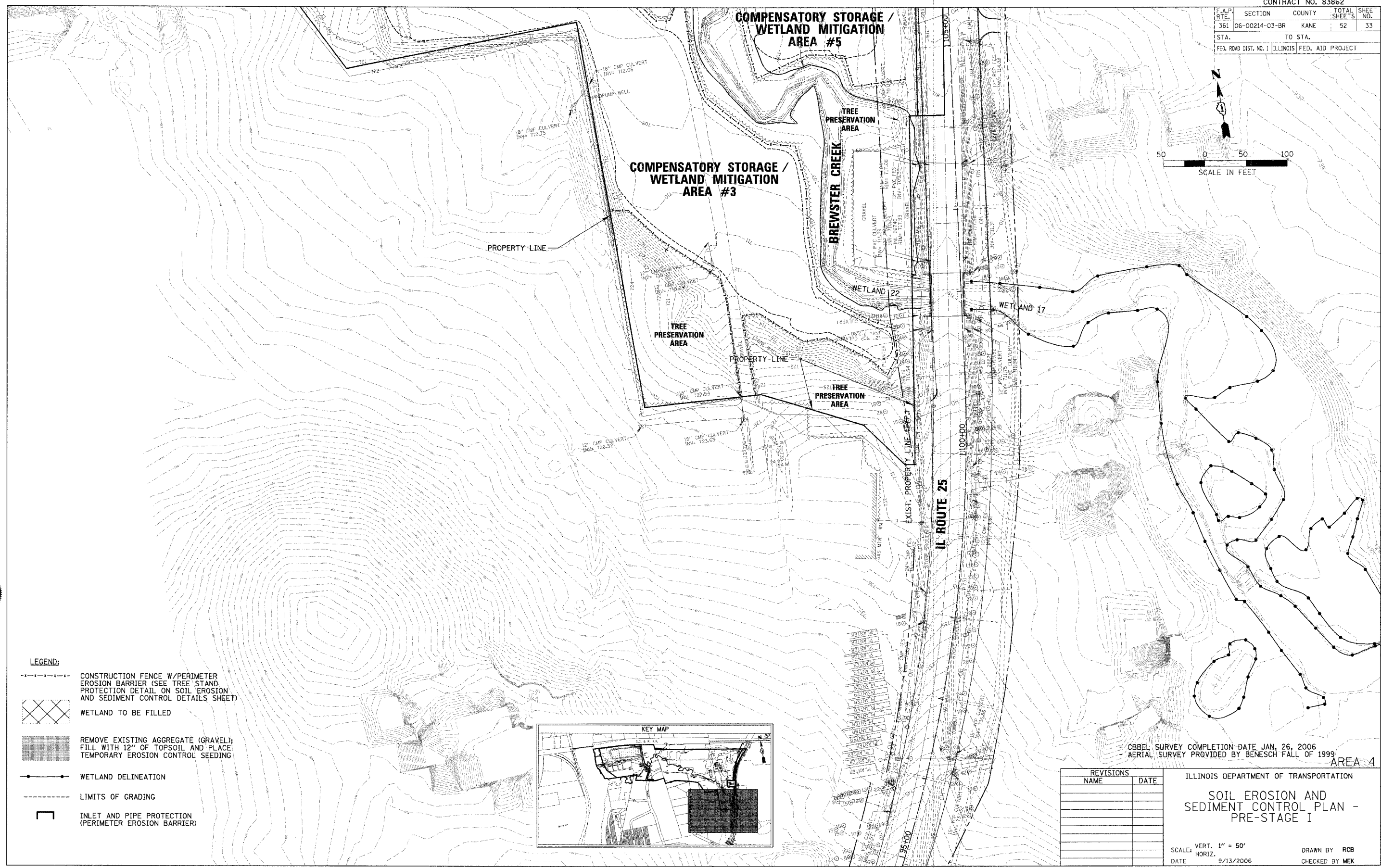


CONTRACT NO. 83862

| F.A.P. RTE. | SECTION | COUNTY | TOTAL SHEETS | SHEET NO. |
|---|----------------|---------|--------------|-----------|
| 361 | 06-00214-03-BR | KANE | 52 | 33 |
| STA. | | TO STA. | | |
| FED. ROAD DIST. NO. 1 ILLINOIS FED. AID PROJECT | | | | |

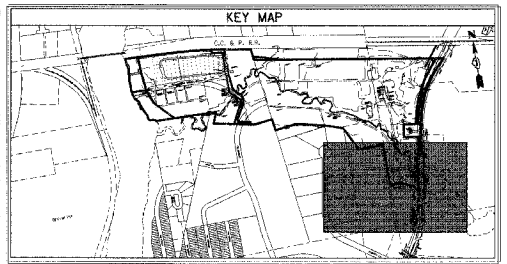


CHRISTOPHER B. BURKE ENGINEERING, LTD.
 9575 W. Higgins Road, Suite 600
 Rosemont, Illinois 60018
 (847) 823-0500



PLOT DATE = 9/13/2006
 FILE NAME = N:\kennecott\047\GRD\Civil\EA\21471_84.ECP
 PLOT SCALE = 5"
 USER NAME = RCB

- LEGEND:**
- CONSTRUCTION FENCE W/PERIMETER EROSION BARRIER (SEE TREE STAND PROTECTION DETAIL ON SOIL EROSION AND SEDIMENT CONTROL DETAILS SHEET)
 - WETLAND TO BE FILLED
 - REMOVE EXISTING AGGREGATE (GRAVEL); FILL WITH 12" OF TOPSOIL AND PLACE TEMPORARY EROSION CONTROL SEEDING
 - WETLAND DELINEATION
 - LIMITS OF GRADING
 - INLET AND PIPE PROTECTION (PERIMETER EROSION BARRIER)



| REVISIONS | |
|-----------|------|
| NAME | DATE |
| | |
| | |
| | |
| | |

ILLINOIS DEPARTMENT OF TRANSPORTATION
SOIL EROSION AND SEDIMENT CONTROL PLAN - PRE-STAGE I
 SCALE: VERT. 1" = 50'
 DATE: 9/13/2006
 DRAWN BY RCB
 CHECKED BY MEK

AREA 4

CBBEL SURVEY COMPLETION DATE JAN. 26, 2006
 AERIAL SURVEY PROVIDED BY BENESCH FALL OF 1999