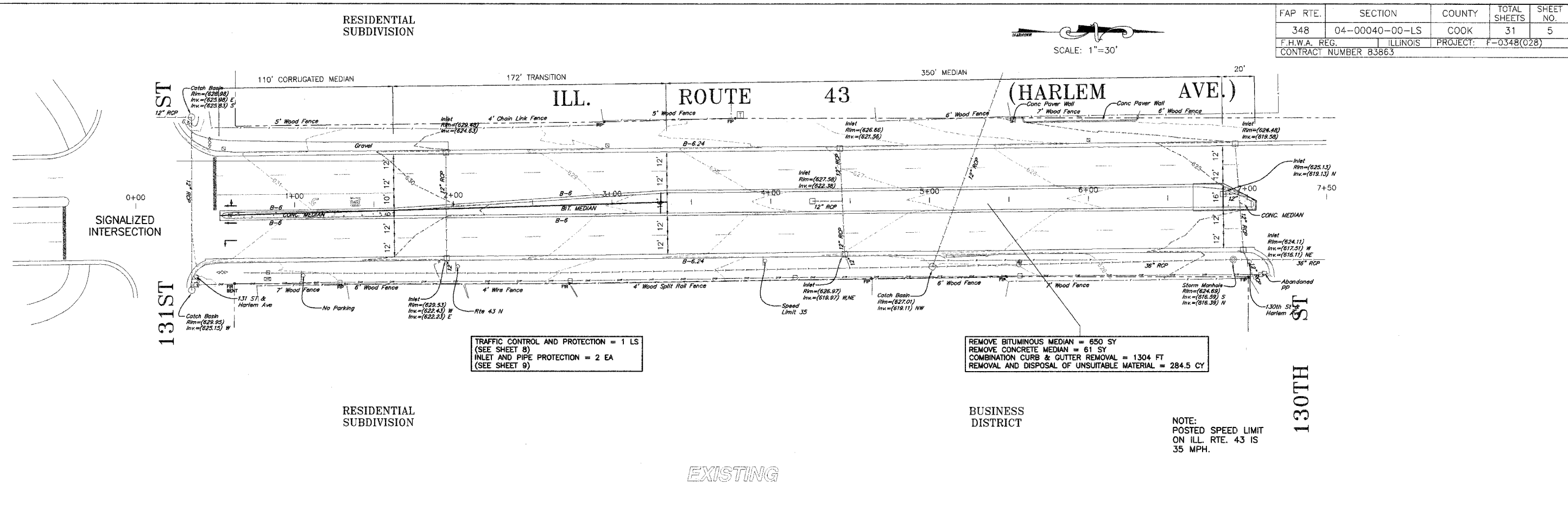


FAP RTE.	SECTION	COUNTY	TOTAL SHEETS	SHEET NO.
348	04-00040-00-LS	COOK	31	5
F.H.W.A. REG.		ILLINOIS	PROJECT: F-0348(028)	
CONTRACT NUMBER 83863				

SCALE: 1"=30'

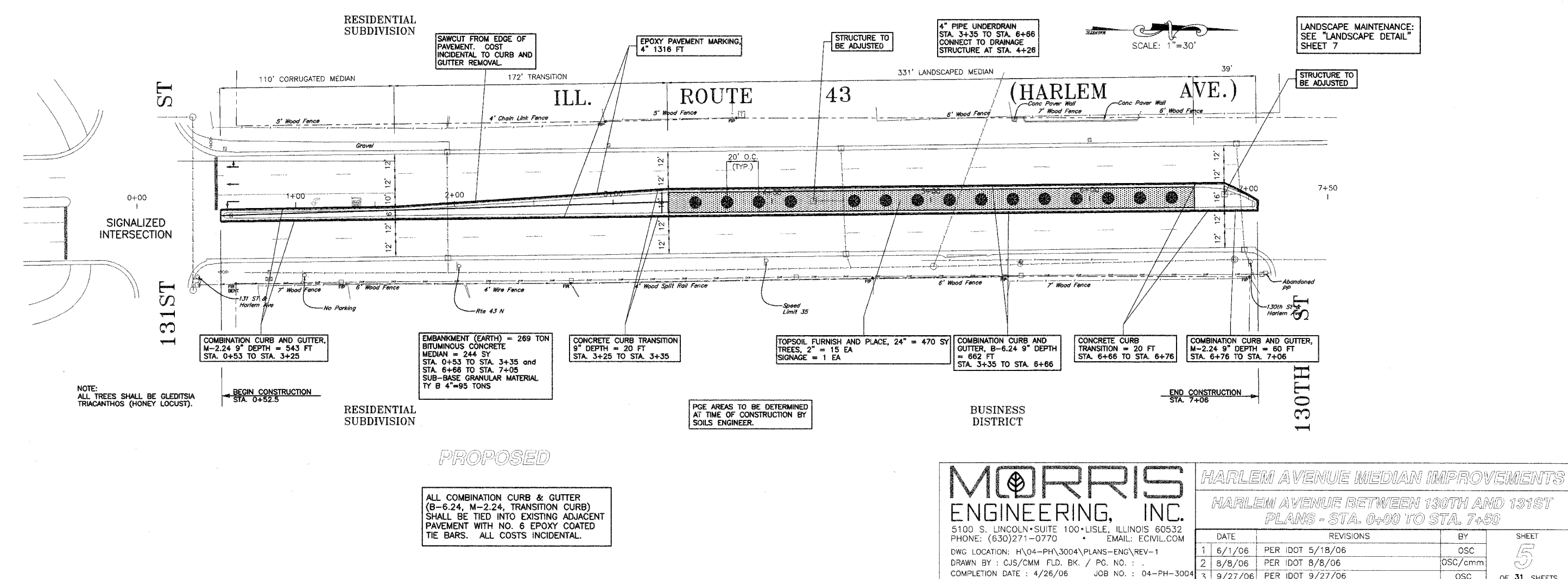


TRAFFIC CONTROL AND PROTECTION = 1 LS
(SEE SHEET 8)
INLET AND PIPE PROTECTION = 2 EA
(SEE SHEET 9)

REMOVE BITUMINOUS MEDIAN = 650 SY
REMOVE CONCRETE MEDIAN = 61 SY
COMBINATION CURB & GUTTER REMOVAL = 1304 FT
REMOVAL AND DISPOSAL OF UNSUITABLE MATERIAL = 284.5 CY

NOTE:
POSTED SPEED LIMIT
ON ILL. RTE. 43 IS
35 MPH.

EXISTING



COMBINATION CURB AND GUTTER,
M-2.24 9" DEPTH = 543 FT
STA. 0+53 TO STA. 3+25

EMBANKMENT (EARTH) = 269 TON
BITUMINOUS CONCRETE
MEDIAN = 244 SY
STA. 0+53 TO STA. 3+35 and
STA. 6+66 TO STA. 7+05
SUB-BASE GRANULAR MATERIAL
TY B 4"=95 TONS

CONCRETE CURB TRANSITION
9" DEPTH = 20 FT
STA. 3+25 TO STA. 3+35

TOPSOIL FURNISH AND PLACE, 24" = 470 SY
TREES, 2" = 15 EA
SIGNAGE = 1 EA

COMBINATION CURB AND GUTTER,
B-6.24 9" DEPTH = 662 FT
STA. 3+35 TO STA. 6+66

CONCRETE CURB TRANSITION = 20 FT
STA. 6+66 TO STA. 6+76

COMBINATION CURB AND GUTTER,
M-2.24 9" DEPTH = 60 FT
STA. 6+76 TO STA. 7+06

NOTE:
ALL TREES SHALL BE GLEDITSIA
TRIACANTHOS (HONEY LOCUST).

BEGIN CONSTRUCTION
STA. 0+52.5

END CONSTRUCTION
STA. 7+06

PCE AREAS TO BE DETERMINED
AT TIME OF CONSTRUCTION BY
SOILS ENGINEER.

PROPOSED

ALL COMBINATION CURB & GUTTER
(B-6.24, M-2.24, TRANSITION CURB)
SHALL BE TIED INTO EXISTING ADJACENT
PAVEMENT WITH NO. 6 EPOXY COATED
TIE BARS. ALL COSTS INCIDENTAL.

MORRIS ENGINEERING, INC.
5100 S. LINCOLN • SUITE 100 • LISLE, ILLINOIS 60532
PHONE: (630) 271-0770 • EMAIL: ECIVIL.COM
DWG LOCATION: H:\04-PH\3004\PLANS-ENG\REV-1
DRAWN BY: CJS/CMM FLD, BK. / PG. NO. :
COMPLETION DATE: 4/26/06 JOB NO.: 04-PH-3004

HARLEM AVENUE MEDIAN IMPROVEMENTS
HARLEM AVENUE BETWEEN 130TH AND 131ST
PLANS - STA. 0+00 TO STA. 7+50

DATE	REVISIONS	BY	SHEET
1 6/1/06	PER IDOT 5/18/06	OSC	5
2 8/8/06	PER IDOT 8/8/06	OSC/cmm	
3 9/27/06	PER IDOT 9/27/06	OSC	

OF 31 SHEETS

PLOT DATE: Sep 28, 2006 RELEASE: 10:14:47 AM PLANS-ENG\REV-1.dwg SHEET: 5 of 31