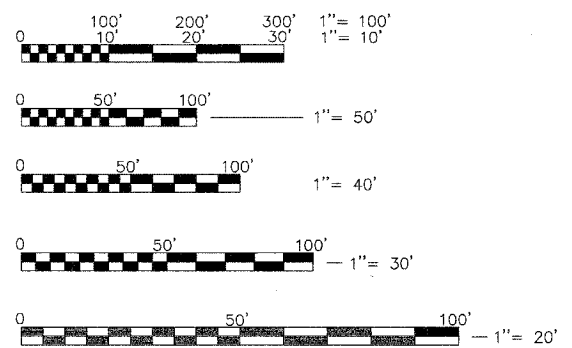


SMITH ENGINEERING CONSULTANTS, INC.
 CIVIL/STRUCTURAL ENGINEERS AND SURVEYORS
 4500 PRIDE PARKWAY, SUITE 201
 MELDEN, ILLINOIS 60050
 PH: 815-385-1776 FAX: 815-385-1781
 www.smithengineering.com E-MAIL: sec@smithengineering.com
 # MCHSENEY # SURVEY # YORKVILLE
 ILLINOIS PROFESSIONAL DESIGN FIRM # 184-000108

F.A.U. RTE.	SECTION	COUNTY	TOTAL SHEETS	SHEET NO.
1517	03-00247-00-BR	KANE	121	1
PROJECT NO. BHM-8003 (278)				
FED. ROAD DIST. NO. 1 ILLINOIS HIGHWAY PROJECT 1				

FOR INDEX OF SHEETS, SEE SHEET NO. 2

SCALES
 PLAN: 1" = 20'
 PROFILE HORIZ.: 1" = 20'
 PROFILE VERT.: 1" = 5'
 CROSS SECTIONS HORIZ.: 1" = 2'
 CROSS SECTIONS VERT.: 1" = 5'



FULL SIZE PLANS HAVE BEEN PREPARED USING STANDARD ENGINEERING SCALES, REDUCED SIZED PLANS WILL NOT CONFORM TO STANDARD SCALES, IN MAKING MEASUREMENTS ON REDUCED PLANS, THE ABOVE SCALES MAY BE USED.

STATE OF ILLINOIS
 DEPARTMENT OF TRANSPORTATION
 DIVISION OF HIGHWAYS
**PLANS FOR PROPOSED
 FEDERAL AID HIGHWAY**

F.A.U. 1517 : ILLINOIS AVENUE OVER THE FOX RIVER
 SECTION NO. 03-00247-00-BR
 ROADWAY WIDENING AND BRIDGE
 SUPERSTRUCTURE REPLACEMENT
 PROJECT NO. ACBHM-8003 (278)
 S.N. 045-6008, 045-6009
 KANE COUNTY
 C-91-076-03

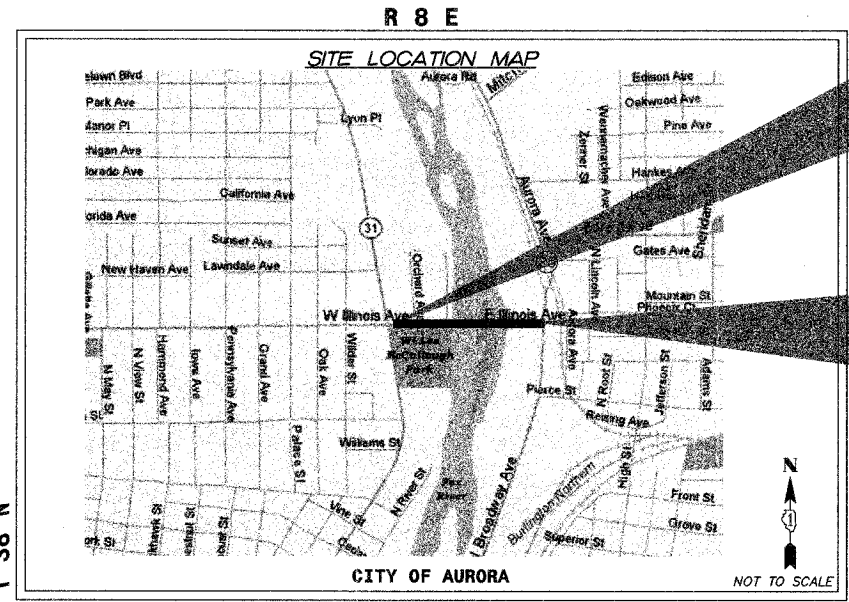


STRUCTURE INFORMATION

SN 045-6008:
 EXISTING AND PROPOSED STRUCTURE IS TWO SPANS (146'-3") REMOVE EXISTING CONCRETE DECK ON CONCRETE BEAM SUPERSTRUCTURE AND REPLACE WITH A 74'-1" WIDE SUPERSTRUCTURE CONSISTING OF A CONCRETE DECK ON STEEL BEAMS. EXISTING SUBSTRUCTURE UNITS TO BE MODIFIED AND RE-USED.

SN 045-6009:
 EXISTING AND PROPOSED STRUCTURE IS FOUR SPANS (296'-8") REMOVE EXISTING CONCRETE DECK ON CONCRETE BEAM SUPERSTRUCTURE AND REPLACE WITH A 74'-1" WIDE SUPERSTRUCTURE CONSISTING OF A CONCRETE DECK ON STEEL BEAMS. EXISTING SUBSTRUCTURE UNITS TO BE MODIFIED AND RE-USED.

PROJECT LOCATED IN THE
 CITY OF AURORA



AURORA TOWNSHIP
 GROSS LENGTH OF PROJECT = 1920 FEET = 0.36 MILES
 NET LENGTH OF PROJECT = 1920 FEET = 0.36 MILES

ILLINOIS AVENUE
 PROJECT BEGINS
 STA. 105+75

ILLINOIS AVENUE
 PROJECT ENDS
 STA. 124+95

DESIGN DESIGNATION
 MINOR ARTERIAL (URBAN)

SPEED LIMIT
 ILLINOIS AVENUE: 30 MPH

TRAFFIC DATA
 ILLINOIS AVENUE: 11,000 (2002)

CITY OF AURORA

APPROVED August 3 2006
Steph K. Anderson
 LOCAL AGENCY OFFICIAL

PASSED September 5 2006
Christopher Holt
 DISTRICT 4 ENGINEER OF LOCAL ROADS AND STREETS

RELEASING FOR
 BID BASED
 ON LIMITED
 REVIEW Sept 11 2006
Diane O'Keefe
 DEPUTY DIRECTOR OF HIGHWAYS, REGION 1 ENGINEER

PRINTED BY AUTHORITY OF THE
 STATE OF ILLINOIS

PROFESSIONAL ENGINEER'S SIGN & SEAL

Jeff L. Pisha
 JEFF L. PISHA P.E.
 DATE: July 28, 2006
 LICENSE EXPIRES: Nov 30, 2007

STRUCTURAL ENGINEER'S SIGN & SEAL

Robert G. Davies
 ROBERT G. DAVIES, S.E., P.E.
 DATE: July 28, 2006
 LICENSE EXPIRES: Nov 30, 2006

CALL JULIE TOLL FREE
 1-800-892-0123

WITH THE FOLLOWING:
 COUNTY KANE
 CITY-TOWNSHIP AURORA - AURORA
 SEC. & 1/4 SEC. NO. # 15

48 hours before you dig
 (Excluding Sat., Sun. & Holidays)

CONTRACT NO. 83867

FEDERAL AID DESIGN ENGINEER: JESSICA MILLER (847) 705-4487