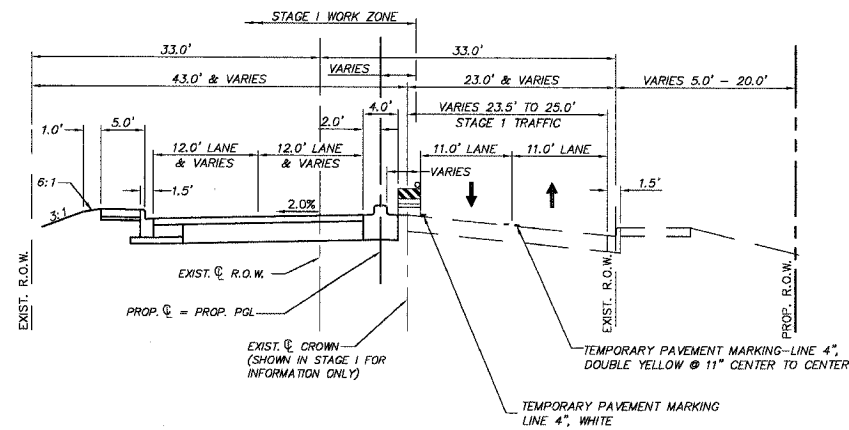
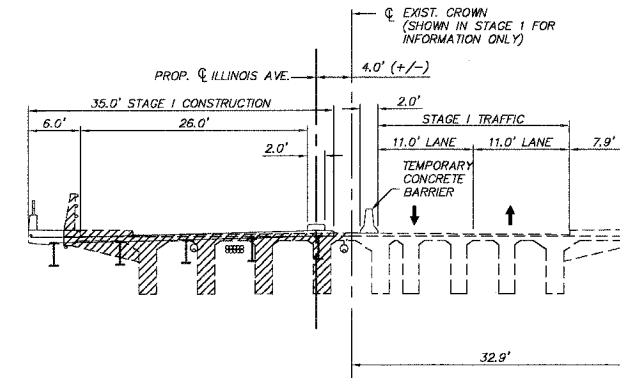


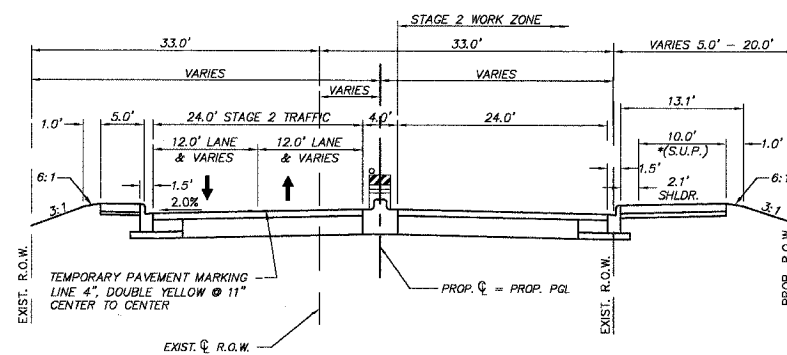
F.A.P. RTE.	SECTION	COUNTY	TOTAL SHEETS	SHEET NO.
1517	03-00247-00-BR	KANE	121	17
STA.		TO STA.		
FED. ROAD DIST. NO. 1		ILLINOIS HIGHWAY PROJECT		
CONTRACT #: 83867				



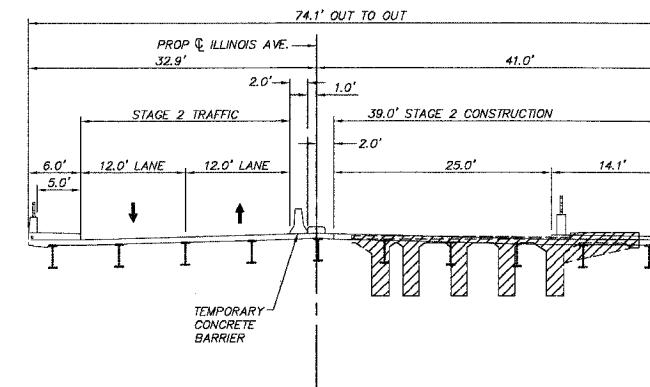
**ILLINOIS AVENUE
TYPICAL ROADWAY SECTION
STAGE 1 CONSTRUCTION**



**ILLINOIS AVENUE
TYPICAL BRIDGE SECTION
STAGE 1 CONSTRUCTION**



**ILLINOIS AVENUE
TYPICAL ROADWAY SECTION
STAGE 2 CONSTRUCTION**
* S.U.P. = SHARED USE PATH



**ILLINOIS AVENUE
TYPICAL BRIDGE SECTION
STAGE 2 CONSTRUCTION**

SUGGESTED MAINTENANCE OF TRAFFIC

GENERAL
- A MINIMUM OF ONE (1) SIDEWALK SHALL BE MAINTAINED FOR THE ENTIRE LENGTH OF THE PROJECT LIMITS AT ALL TIMES DURING CONSTRUCTION

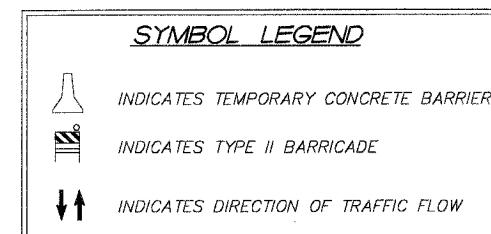
ADVANCE WORK
- COORDINATE WITH REQUIRED UTILITY RELOCATIONS.
- REMOVE EXISTING CONCRETE MEDIAN FROM STA 109+11 TO STA. 110+72 AND PLACE TEMPORARY PAVEMENT. MAINTAIN EXISTING TRAFFIC USING HIGHWAY STANDARD 701806.

STAGE I
TRAFFIC:
- MAINTAIN ONE LANE OF TRAFFIC IN EACH DIRECTION UTILIZING THE EXISTING TWO EASTBOUND LANES.

CONSTRUCTION:
- CONSTRUCT NORTH HALVES OF BRIDGES, PEDESTRIAN TUNNEL AND AVAILABLE PORTIONS OF ROADWAY. CONSTRUCT REMAINDER OF NORTH HALF OF ROADWAY UTILIZING HIGHWAY STANDARD 701806.

STAGE II
TRAFFIC:
- MAINTAIN ONE LANE OF TRAFFIC IN EACH DIRECTION UTILIZING THE NEWLY CONSTRUCTED WEST BOUND LANES.

CONSTRUCTION:
- CONSTRUCT SOUTH HALVES OF BRIDGES, PEDESTRIAN TUNNEL, AND AVAILABLE PORTIONS OF ROADWAY. CONSTRUCT REMAINDER OF SOUTH HALF OF ROADWAY UTILIZING HIGHWAY STANDARD 701806.



REVISIONS	
NAME	DATE
7.	
6.	
5.	
4.	
3.	
2.	
1.	

SMITH ENGINEERING CONSULTANTS, INC.
CIVIL/STRUCTURAL ENGINEERS AND SURVEYORS
4500 FIRME PARKWAY, SUITE 201
McHENRY, ILLINOIS 60050
PH: 815-385-1778 FAX: 815-385-1781
www.smithengineering.com E-MAIL: seo@smithengineering.com
McHENRY HUNTLEY YORKVILLE
ILLINOIS PROFESSIONAL DESIGN FIRM # 184-000108

ILLINOIS DEPARTMENT OF TRANSPORTATION
CITY OF AURORA
ILLINOIS AVENUE OVER THE FOX RIVER
SUGGESTED MAINTENANCE OF TRAFFIC
TYPICAL SECTIONS

SCALE: "N"TS
DATE 07-28-2006
DRAWN BY WJH
CHECKED BY JLP

PLOT FILE: STANDARD
VIEW: 02-17
COMP. FILE: 020181-2006.dwg