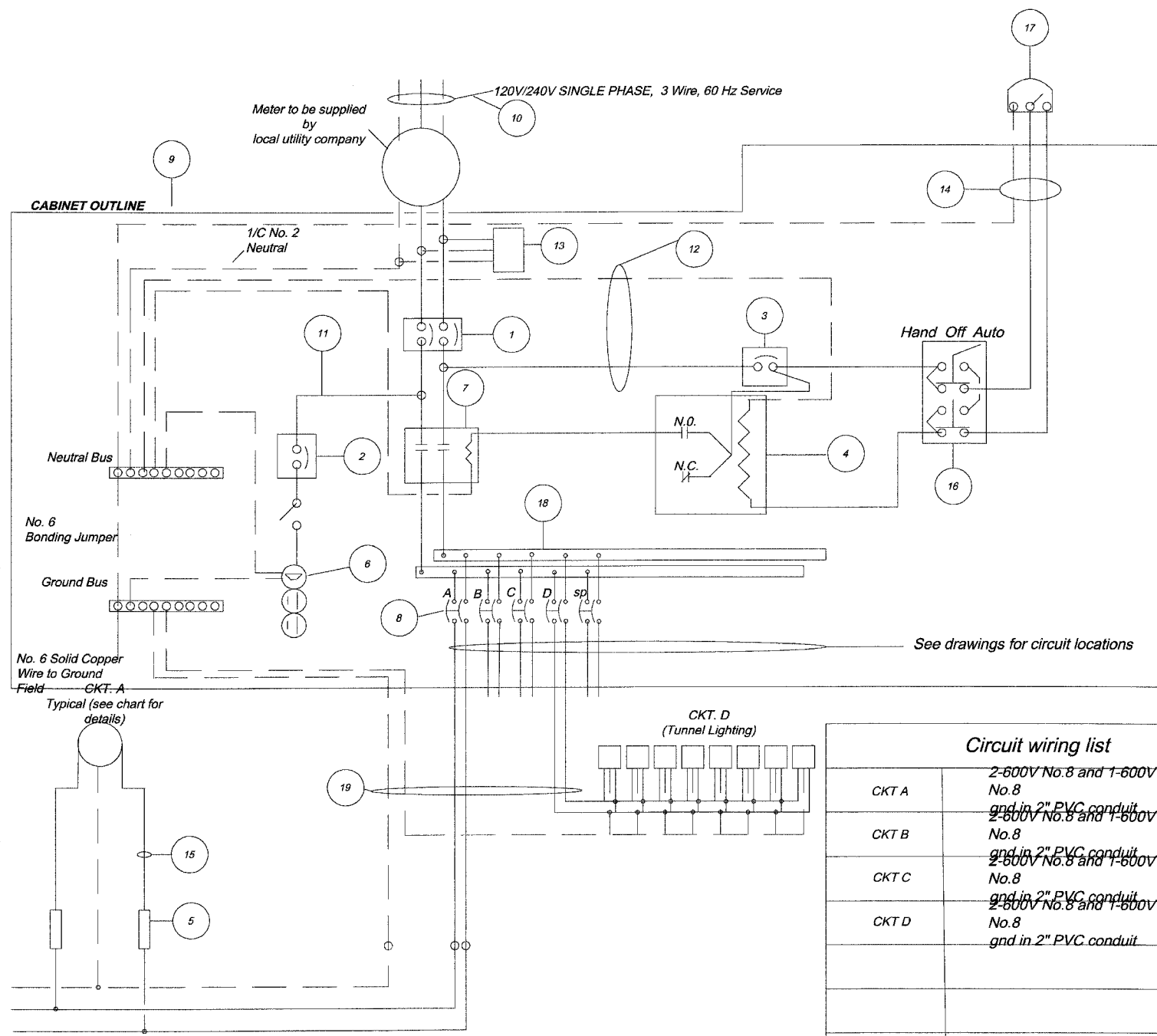


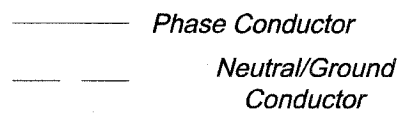
### LIGHTING CONTROLLER LC2 COMPONENT SCHEDULE

ITEM	DESCRIPTION	SPECIFICATION OR EQUAL
1	Main Circuit Breaker	100A, 2P, 240V Rating, 10K AIC
2	Lampholder Circuit Breaker	15A, 1P, 120V Rating, 10K AIC
3	Photoelectric Control Circuit Breaker	15A, 1P, 120V Rating, 10K AIC
4	Auxiliary Relay	120V Operated SPST 60Hz Coil 600V Normally Open Contacts
5	Fuse	Single Pole In-Line Fuseholder 600V, 5A
6	Lampholder With Outlet	120V Weatherproof Lampholder with SPST Switch & GFCI Outlet
7	Contactor	100A, 2P, 240V Rating, 10K AIC
8	Branch Line Circuit Breakers	14 - 20A, 2P, 240V Rating, 10K AIC Note: circuit F2 to be 30A
9	Control Cabinet	H41"x W25"x D16" NEMA 3R
10	Service Cables	Existing Service
11	Lampholder Wire	2 - 600V No. 12
12	Control Wire	2 - 600V No. 12
13	Surge Arrestor	10K Ampere Rating
14	Photoelectric Control Wire	3 - 600V No. 10
15	Lighting Pole Wire	2 - 600V 10awg cables with Pole Ground and Fusing
16	HAND/OFF/AUTO Control Switch	20A, 3 Position, 600V
17	Photocell	
18	Terminal Block	600V
19	Lighting circuit Control Wire	2-600V No.8 and 1-600V No.8 gnd in 2" unit duct



Circuit wiring list	
CKT A	2-600V No.8 and 1-600V No.8 gnd in 2" PVC conduit
CKT B	2-600V No.8 and 1-600V No.8 gnd in 2" PVC conduit
CKT C	2-600V No.8 and 1-600V No.8 gnd in 2" PVC conduit
CKT D	2-600V No.8 and 1-600V No.8 gnd in 2" PVC conduit

### LIGHTING CONTROLLER WIRING DETAIL



Circuit I.D.	QTY	AMPERE	WATTS
A	7	8.4	2016W
B	2	2.4	576W
C	5	6	1440W
D	8	8.8	2112W
<b>Total</b>			<b>6144W</b>

REVISIONS	
NAME	DATE
7.	
6.	
5.	
4.	
3.	
2.	
1.	

SMITH ENGINEERING CONSULTANTS, INC.  
CIVIL/STRUCTURAL ENGINEERS AND SURVEYORS  
4500 FREEMAN PARKWAY, SUITE 201  
McHENRY, ILLINOIS 60050  
PH: 815-385-1770 FAX: 815-385-1781  
www.smithengineering.com E-MAIL: seo@smithengineering.com  
McHENRY ILLINOIS YORKVILLE ILLINOIS  
ILLINOIS PROFESSIONAL DESIGN FIRM # 184-000100

ILLINOIS DEPARTMENT OF TRANSPORTATION  
CITY OF AURORA  
ILLINOIS AVENUE OVER THE FOX RIVER  
LIGHTING PLANS AND DETAILS  
LIGHTING CONTROLLER PANEL DETAILS  
SCALE: N.T.S. DRAWN BY  
DATE 07-28-08 CHECKED BY GB

PLOT FILE: STANDARD  
NEW: CF-3B  
COMPTON FILE: CDD191-609-lighting.dwg