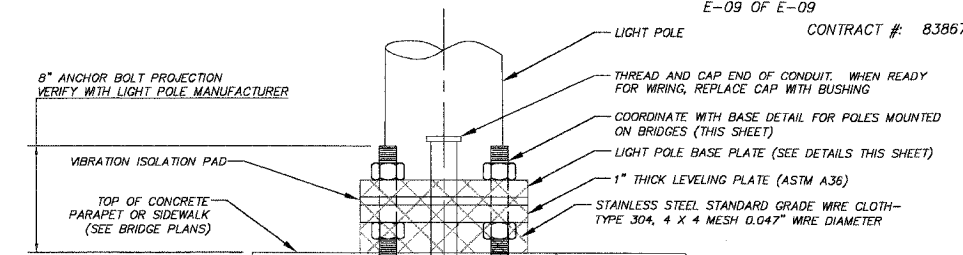
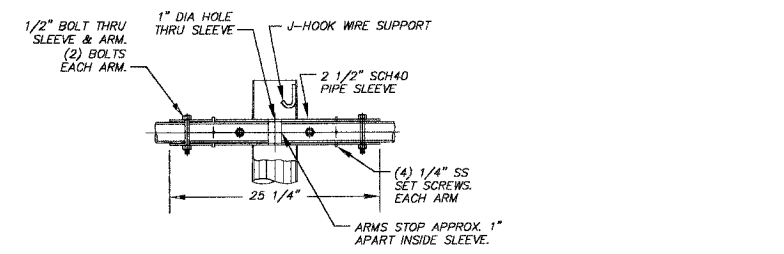
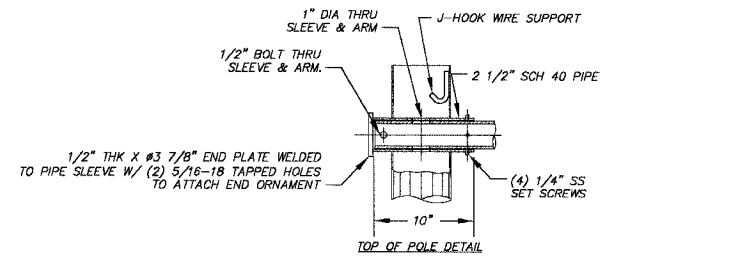


F.A.P. RTE.	SECTION	COUNTY	TOTAL SHEETS	SHEET NO.
1517	03-00247-00-BR	KANE	121	41
STA.	TO STA.			
FED. ROAD DIST. NO. 1 ILLINOIS HIGHWAY PROJECT				

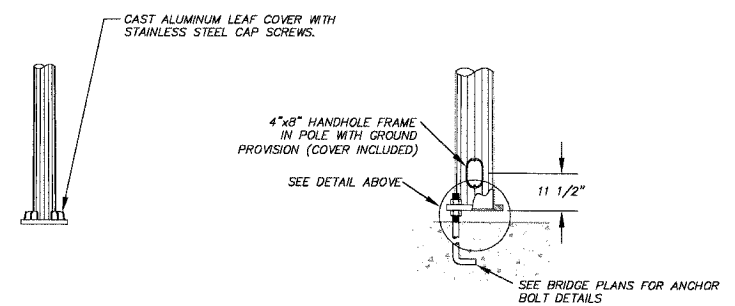
E-09 OF E-09  
CONTRACT # 83867



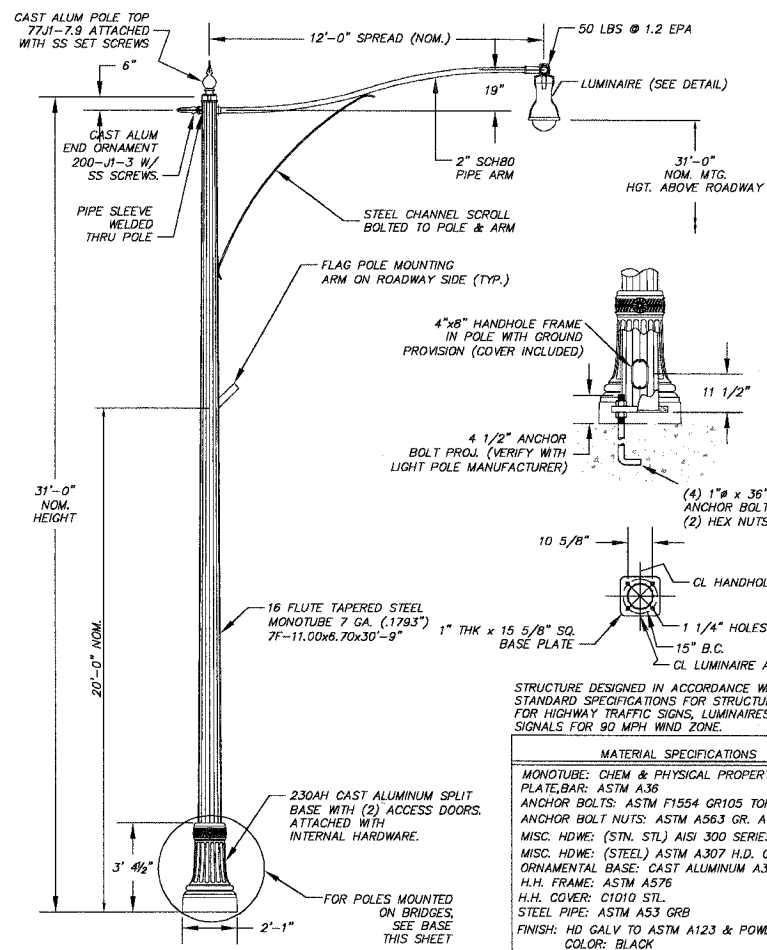
NOTE: THE COST OF THE VIBRATION ISOLATION PAD AND LEVELING PLATE SHALL BE INCLUDED IN THE ITEM "LIGHT POLE, STEEL, 30 FT. M.H., 12 FT. MAST ARM" OR "LIGHT POLE, STEEL, 30 FT. M.H., 12 FT. MAST ARM, TWIN"

**INSTALLATION DETAIL FOR POLES MOUNTED ON BRIDGES**

WORK THIS DETAIL WITH BRIDGE PLANS



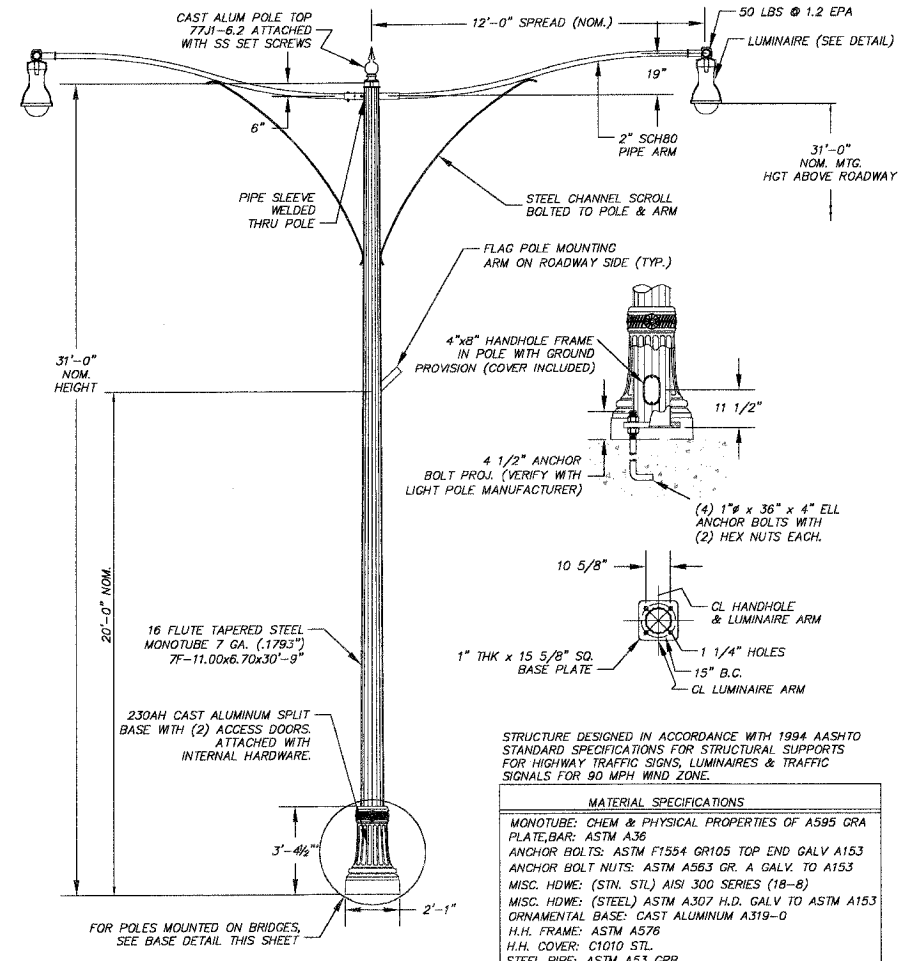
**BASE DETAIL FOR POLES MOUNTED ON BRIDGES**



STRUCTURE DESIGNED IN ACCORDANCE WITH 1994 AASHTO STANDARD SPECIFICATIONS FOR STRUCTURAL SUPPORTS FOR HIGHWAY TRAFFIC SIGNS, LUMINAIRES & TRAFFIC SIGNALS FOR 90 MPH WIND ZONE.

**MATERIAL SPECIFICATIONS**  
 MONOTUBE: CHEM & PHYSICAL PROPERTIES OF A595 GRA PLATE, BAR: ASTM A36  
 ANCHOR BOLTS: ASTM F1554 GR105 TOP END GALV A153  
 ANCHOR BOLT NUTS: ASTM A563 GR. A GALV. TO A153  
 MISC. HDWE: (STN. STL) AISI 300 SERIES (18-8)  
 MISC. HDWE: (STEEL) ASTM A307 H.D. GALV TO ASTM A153  
 ORNAMENTAL BASE: CAST ALUMINUM A319-D  
 H.H. FRAME: ASTM A576  
 H.H. COVER: C1010 STL.  
 STEEL PIPE: ASTM A53 GRB  
 FINISH: HD GALV TO ASTM A123 & POWDER COATED.  
 COLOR: BLACK

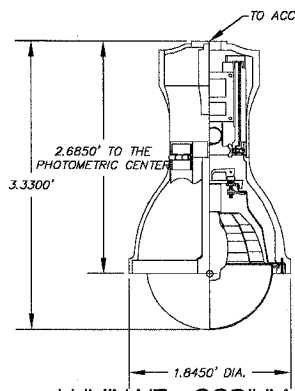
**LIGHT POLE, STEEL, 30 FT. M.H., 12 FT. MAST ARM DETAIL**  
UNION METAL CORPORATION MODEL B70028-230-B41-Y1 OR APPROVED EQUAL



STRUCTURE DESIGNED IN ACCORDANCE WITH 1994 AASHTO STANDARD SPECIFICATIONS FOR STRUCTURAL SUPPORTS FOR HIGHWAY TRAFFIC SIGNS, LUMINAIRES & TRAFFIC SIGNALS FOR 90 MPH WIND ZONE.

**MATERIAL SPECIFICATIONS**  
 MONOTUBE: CHEM & PHYSICAL PROPERTIES OF A595 GRA PLATE, BAR: ASTM A36  
 ANCHOR BOLTS: ASTM F1554 GR105 TOP END GALV A153  
 ANCHOR BOLT NUTS: ASTM A563 GR. A GALV. TO A153  
 MISC. HDWE: (STN. STL) AISI 300 SERIES (18-8)  
 MISC. HDWE: (STEEL) ASTM A307 H.D. GALV TO ASTM A153  
 ORNAMENTAL BASE: CAST ALUMINUM A319-D  
 H.H. FRAME: ASTM A576  
 H.H. COVER: C1010 STL.  
 STEEL PIPE: ASTM A53 GRB  
 FINISH: HD GALV TO ASTM A123 & POWDER COATED.  
 COLOR: BLACK

**LIGHT POLE, STEEL, 30 FT. M.H., 12 FT. MAST ARM, TWIN DETAIL**  
UNION METAL CORPORATION MODEL B70028-230-B43-Y1 OR APPROVED EQUAL



**LUMINAIRE SPECIFICATIONS**  
 STYLE: COLUMBIA VERTICAL LAMP, TYPE III, CUTOFF WITH 12" HALF ROUND GLOBE  
 HEIGHT: 27 3/4"  
 WIDTH: 15 3/8" DIAMETER  
 MATERIAL: CAST ALUMINUM ALLOY ANS1 356 PER A.S.T.M. B26-95  
 GLOBE: CLEAR POLYCARBONATE  
 DISTRIBUTION: TYPE III - ASYMMETRIC  
 FINISH: PRIME PAINT THEN FINISH SHERWIN WILLIAMS ACROLON - BLACK  
 LAMPING: 250 WATT HPS  
 VOLTAGE: QUAD  
 SOCKET: MODUL BASE  
 PHOTO CONTROL: NONE

**LUMINAIRE, SODIUM VAPOR, VERTICAL MOUNT, 250 WATT DETAIL**  
SPRING CITY MFG. CO. MODEL ALMCLB-PHR2-VC3 OR APPROVED EQUAL

**SMITH ENGINEERING CONSULTANTS, INC.**  
 CIVIL/STRUCTURAL ENGINEERS AND SURVEYORS  
 4500 FIRME PARKWAY, SUITE 201  
 MCKENRY, ILLINOIS 60050  
 PH: 815-395-1778 FAX: 815-395-1781  
 www.smithengineering.com E-MAIL: seo@smithengineering.com  
 • MCKENRY • HUNTERLY • YORKVILLE  
 ILLINOIS PROFESSIONAL DESIGN FIRM # 184-000108

ILLINOIS DEPARTMENT OF TRANSPORTATION  
 CITY OF AURORA  
 ILLINOIS AVENUE OVER THE FOX RIVER  
 LIGHTING PLANS AND DETAILS

SCALE: N.T.S. DRAWN BY CFR  
 DATE 07-28-06 CHECKED BY GB

REVISIONS	
NAME	DATE
7.	
6.	
5.	
4.	
3.	
2.	
1.	

PLT FILE: STANDARD  
 VIEW: CE-41  
 COMP. FILE: 030181-009-lighting.dwg