

TOTAL BILL OF MATERIAL

ITEM	UNIT	TOTAL
Concrete Removal	Cu. Yd.	16.1
Bridge Rail Removal	Foot	36
Structure Excavation	Cu. Yd.	6.0
Concrete Structures	Cu. Yd.	31.4
Concrete Superstructure	Cu. Yd.	44.7
* Protective Coat	Sq. Yd.	127
* Structural Repair of Concrete (Depth Equal to or less than 5 in.)	Sq. Ft.	130
Reinforcement Bars, Epoxy Coated	Pound	17,370
Expansion Bolts 3/4 Inch	Each	56
* Bicycle Railing, Special	Foot	134
Bar Splicers	Each	28
* Handrail Removal	Foot	116
* Bridge Approach Pavement (Special)	Sq. Yd.	168

*Indicates Item Requires a Special Provision.

GENERAL NOTES

Reinforcement bars shall conform to the requirements of AASHTO M31 or M322, Grade 60.

All new concrete exposed to earth shall be waterproofed according to Article 503.18 of the Standard Specifications.

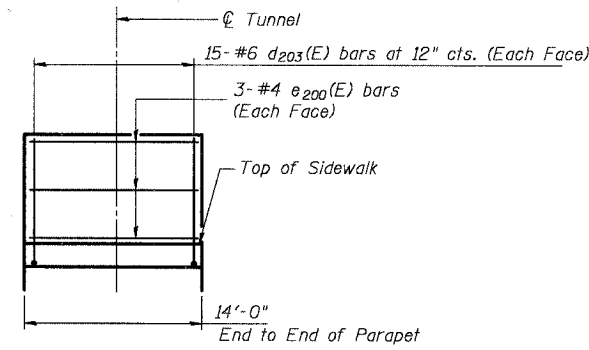
Plan dimensions and details relative to existing structure have been taken from existing plans and are subject to nominal construction variations. It shall be the Contractor's responsibility to verify such dimensions and details in the field and make necessary approved adjustments prior to construction or ordering of materials. Such variations shall not be cause for additional compensation for a change in the scope of the work, however, the Contractor will be paid for the quantity actually furnished at the unit price for the work.

All Construction Joints shall be bonded.

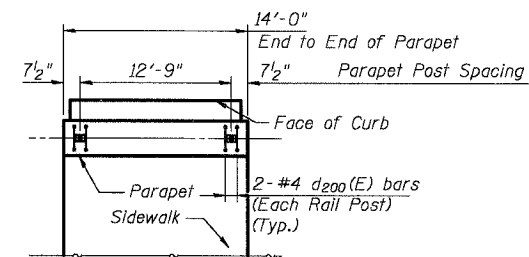
For Lighting Details, see Lighting Plans.

The information shown in these plans concerning the type and location of utilities is not guaranteed to be accurate or all-inclusive. The Contractor is responsible for making his own determination as to the existence of type, size and location of all underground and overhead utilities as may be necessary to avoid conflict with construction operations and/or damage to the utility.

Cost for Rubbed Finish is included in the cost for Concrete Structures.

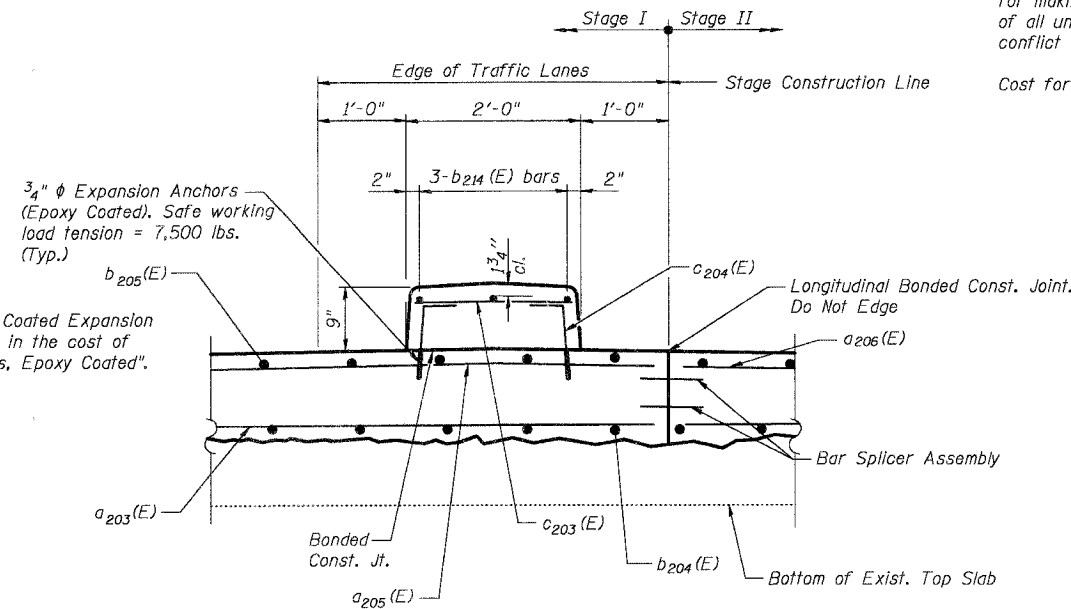


INSIDE ELEVATION OF SOUTH PARAPET



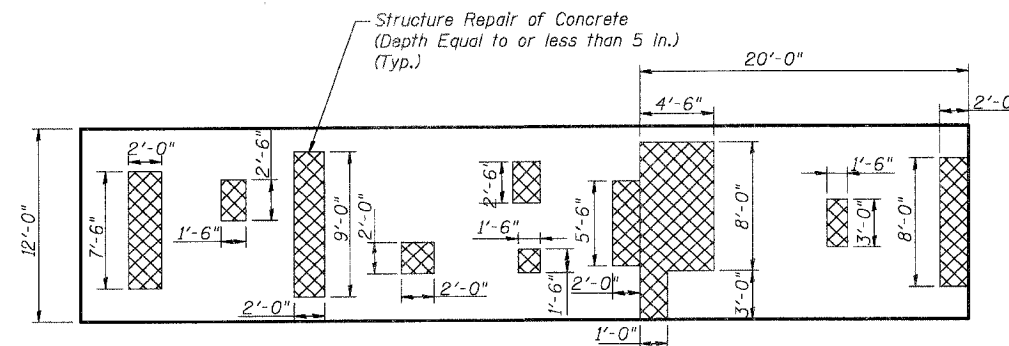
TOP PLAN OF SOUTH PARAPET

See Roadway Drawing for adjacent parapets not located on the tunnel.
See Sheet ST-7 for Bill of Material.



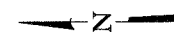
SECTION THRU MEDIAN

(Looking East)
See Sheet ST-5 for Bill of Material.



BOTTOM OF EXISTING TOP SLAB

N.T.S.



DESIGNED	AEU
CHECKED	RGD
DRAWN	WJH
CHECKED	NRF

SMITH ENGINEERING CONSULTANTS, INC. LEVEL SURVEYORS AND SURVEYERS 1111 FARMINGTON ROAD AURORA, ILLINOIS 60009-1111	
REVISTIONS	
NAME	DATE

CITY OF AURORA	
GENERAL NOTES AND BILL OF MATERIAL	
PEDESTRIAN TUNNEL	
ILLINOIS AVENUE	
OVER THE FOX RIVER	
SECTION NO. 03-00247-00-BR	
KANE COUNTY	
DATE	7-28-2006

PROJECT NAME: PEDESTRIAN TUNNEL
 PROJECT NO.: 03-00247-00-BR
 SHEET NO.: ST-12
 DATE: 7-28-2006