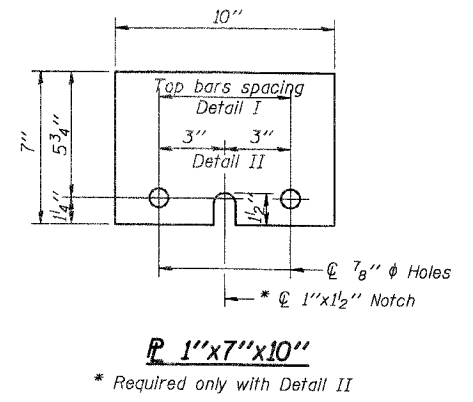
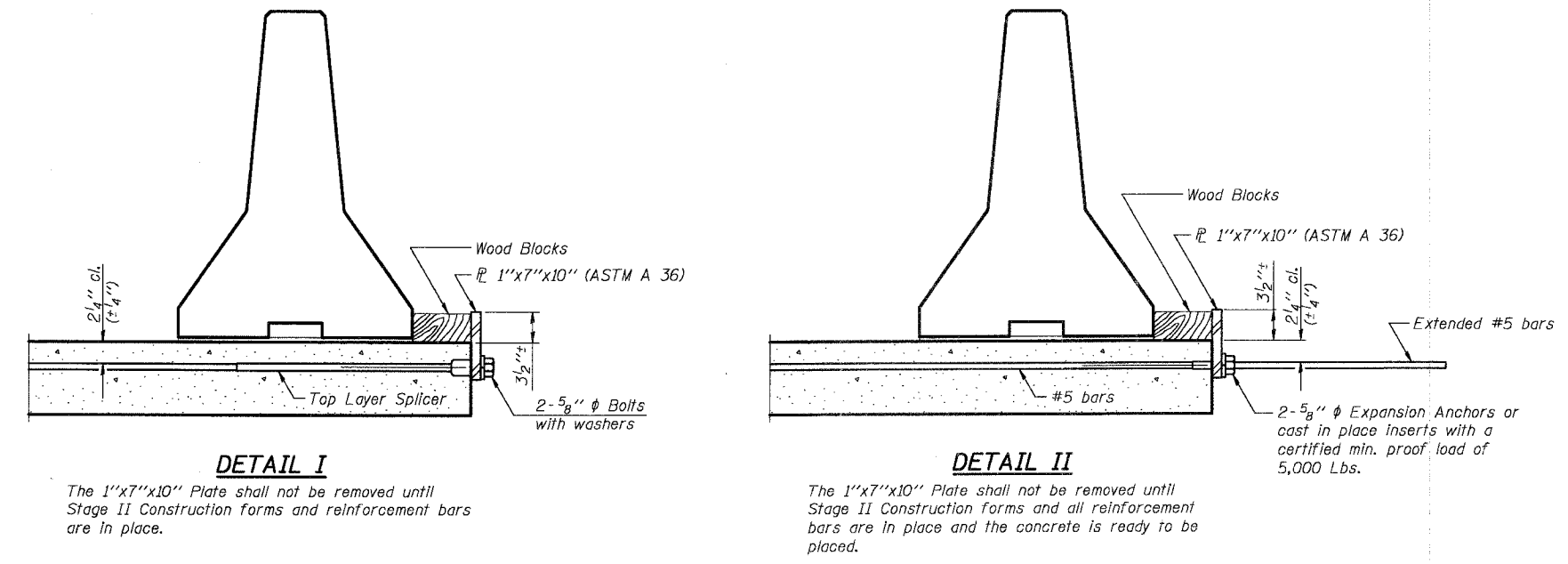


NOTES

Detail I - With Bar Splicer or Couplers:
Connect one (1) 1"x7"x10" steel \bar{L} to the top layer of couplers with 2-5/8" ϕ bolts screwed to coupler at approximate \bar{C} of each barrier panel.

Detail II - With Extended Reinforcement Bars:
Connect one (1) 1"x7"x10" steel \bar{L} to the concrete slab with 2-5/8" ϕ Expansion Anchors or cast in place inserts spaced between the top layer of reinforcement at approximate \bar{C} of each barrier panel.

Cost of anchorage is included with Temporary Concrete Barrier.



DESIGNED	AEU
CHECKED	RGD
DRAWN	WJH
CHECKED	NRF

SMITH ENGINEERING CONSULTANTS, INC.	
CIVIL, STRUCTURAL, ELECTRICAL AND SURVEYING	
1111 North Franklin Street, Suite 200, Chicago, IL 60610	
TEL: (312) 467-1100 FAX: (312) 467-1101	
WWW.SMITHENGINEERING.COM	
REVISIONS	
NAME	DATE

CITY OF AURORA

TEMPORARY CONCRETE BARRIER
PEDESTRIAN TUNNEL
ILLINOIS AVENUE
OVER THE FOX RIVER
SECTION NO. 03-00247-00-BR
KANE COUNTY

DATE 7-28-2006

PROJECT NO. 03-00247-00-BR SHEET 75 OF 121
 PROJECT NAME: PEDESTRIAN TUNNEL OVER THE FOX RIVER
 CONTRACT NO. 03-00247-00-BR
 DATE: 7/28/06