

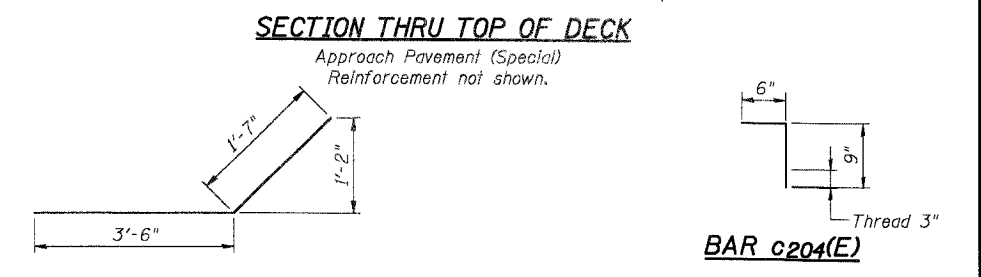
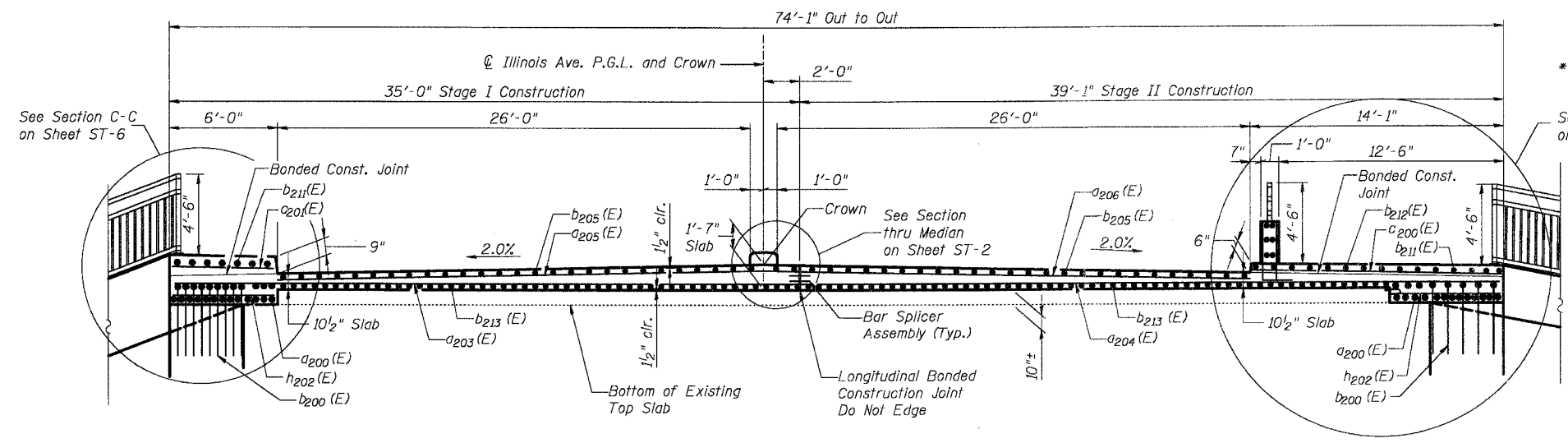
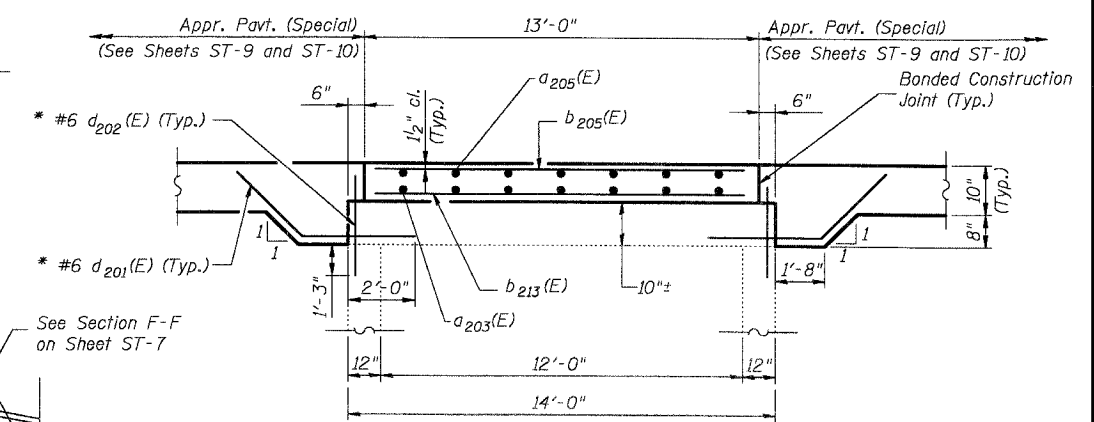
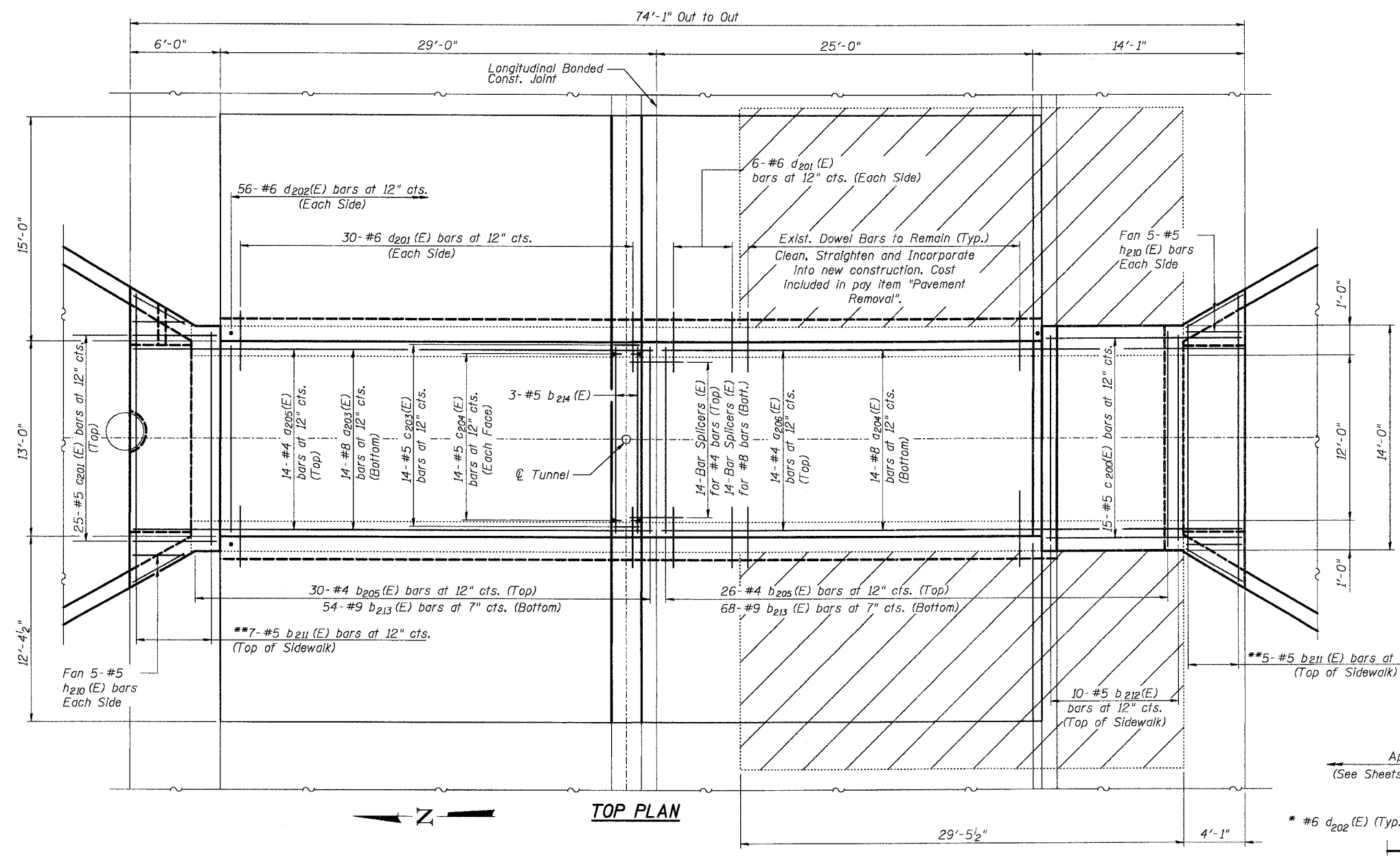
LEGEND:
 Existing Approach Pavement to be removed

BILL OF MATERIALS

Bar No.	Size	Length	Shape
a203(E)	14 # 8	34'-8"	—
a204(E)	14 # 8	38'-9"	—
a205(E)	14 # 4	28'-10"	—
a206(E)	14 # 4	24'-10"	—
b204(E)	122 # 9	12'-8"	—
b205(E)	56 # 4	12'-8"	—
b206(E)	3 # 5	12'-8"	—
b211(E)	12 # 5	18'-5"	—
b212(E)	10 # 5	13'-8"	—
c200(E)	15 # 5	13'-8"	—
c201(E)	15 # 5	5'-8"	—
c203(E)	14 # 5	1'-8"	—
c204(E)	28 # 5	1'-3"	—
d201(E)	72 # 6	5'-1"	—
d206(E)	112 # 6	3'-0"	—
h206(E)	30 # 5	6'-8"	—
h210(E)	20 # 5	3'-9"	—
Reinforcement Bars, Epoxy Coated	Pound	10,980	
Concrete Superstructure	Cu. Yd.	44.7	
Protective Coat	Sq. Yd.	127	

NOTES:

Reinforcement bars designated (E) shall be epoxy coated. Work this sheet with sheets ST-6 and ST-7. See sheet ST-2 for Section Thru Median. See sheets ST-9 and ST-10 for Approach Pavement (Special) Details.



DESIGNED	AEU
CHECKED	RGD
DRAWN	WJH
CHECKED	NRF

REVISIONS	
NAME	DATE

CITY OF AURORA
 TUNNEL DETAILS
 PEDESTRIAN TUNNEL
 ILLINOIS AVENUE
 OVER THE FOX RIVER
 SECTION NO. 03-00247-00-BR
 KANE COUNTY
 DATE 7-28-2006

SMITH ENGINEERING CONSULTANTS, INC. CIVIL/STRUCTURAL ENGINEERS AND SURVEYORS
 PROJECT NO. 03-00247-00-BR
 SHEET NO. ST-5 OF 76 SHEETS
 DATE 7-28-2006