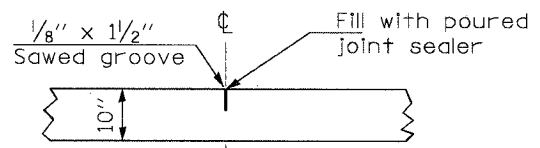


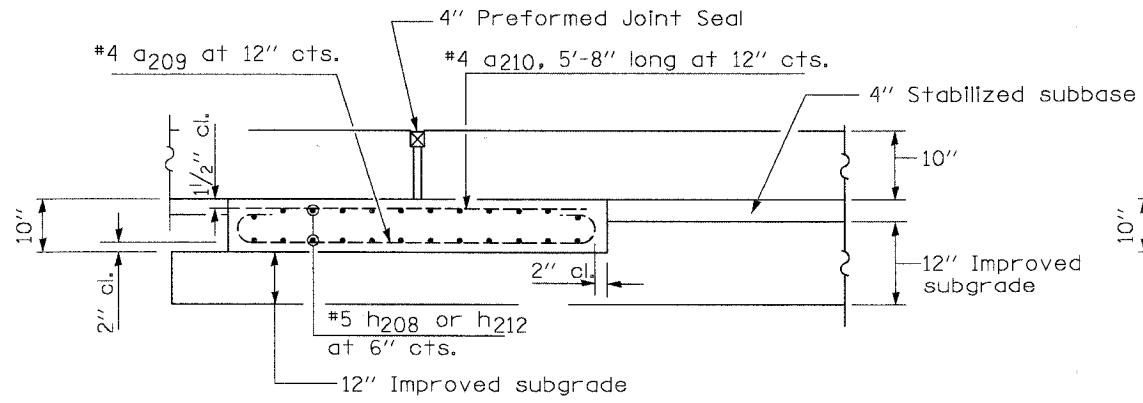
**APPROACH PAVEMENT  
BILL OF MATERIAL**

Bar	No.	Size	Length	Shape
Clear (E)	111	# 6	16'-6"	U
Clear (E)	56	# 5	14'-8"	U
Clear (E)	60	# 4	6'-8"	U
Clear (E)	60	# 4	5'-8"	U
Clear (E)	111	# 6	13'-10"	U
Clear (E)	56	# 5	12'-0"	U
Clear (E)	28	# 5	25'-3"	U
Clear (E)	9	# 4	29'-3"	U
Clear (E)	28	# 5	29'-3"	U
Clear (E)	12	# 6	4'-0"	U
Clear (E)	9	# 4	25'-3"	U
Clear (E)	3	# 5	12'-0"	U
Clear (E)	3	# 5	14'-8"	U
Clear (E)	29	# 5	1'-8"	U
Clear (E)	29	# 5	1'-3"	U
Clear (E)	24	# 5	27'-3"	U
Clear (E)	24	# 5	31'-3"	U
Bridge Approach Pavement (Special)		Sq. Yd.	168	

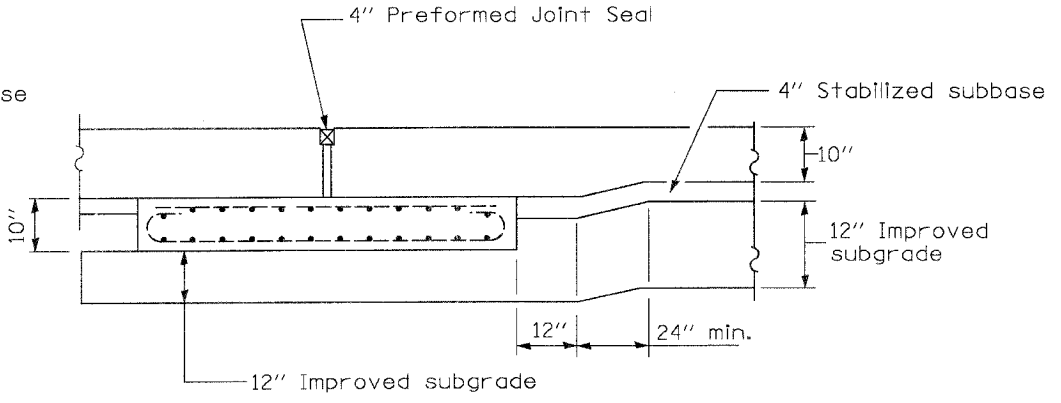


**SAWED JOINT DETAIL\***  
(Reinforcement Not Shown)

\* Saw  $\phi$  or lane edge if poured two or more lane widths at a time.



**SECTION G-G - RIGID PAVEMENT**  
(Showing reinforcement)



**SECTION H-H - RIGID PAVEMENT**  
Work with Bridge Approach Pavement Standard.

DESIGNED	AEU
CHECKED	RGD
DRAWN	WJH
CHECKED	NRF

REVISIONS	
NAME	DATE

CITY OF AURORA  
**APPROACH PAVEMENT DETAILS I**  
 PEDESTRIAN TUNNEL  
 ILLINOIS AVENUE  
 OVER THE FOX RIVER  
 SECTION NO. 03-00247-00-BR  
 KANE COUNTY  
 DATE 7-28-2006

**GENERAL NOTES**  
 Work this Sheet with Sheet ST-10.  
 All reinforcement bars shall be epoxy coated.  
 THICKNESS-"'=Thickness of Pavement.  
 Hooked bars are detailed on Sheet ST-10.  
 Reinforcement Bars, Epoxy Coated shall not be paid for separately but included in the cost of Bridge Approach Pavement (Special).

DESIGN: AEU, CHECKED: RGD, DRAWN: WJH, CHECKED: NRF  
 PROJECT: CONTRACT #83867, PROJECT: CONTRACT #83867  
 DATE: 7-28-2006