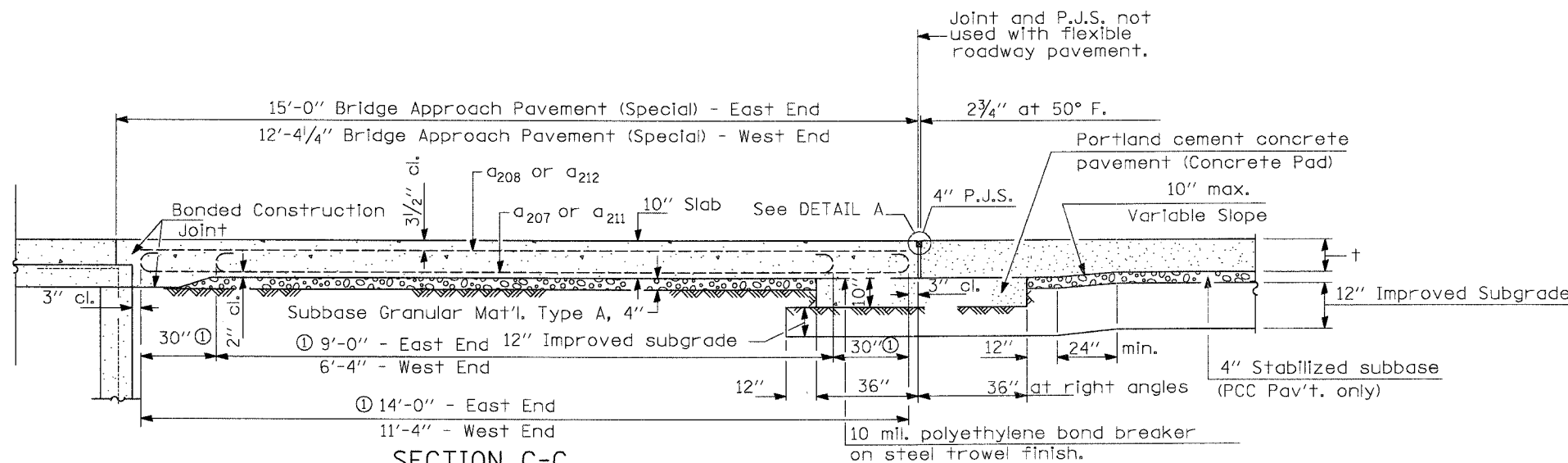


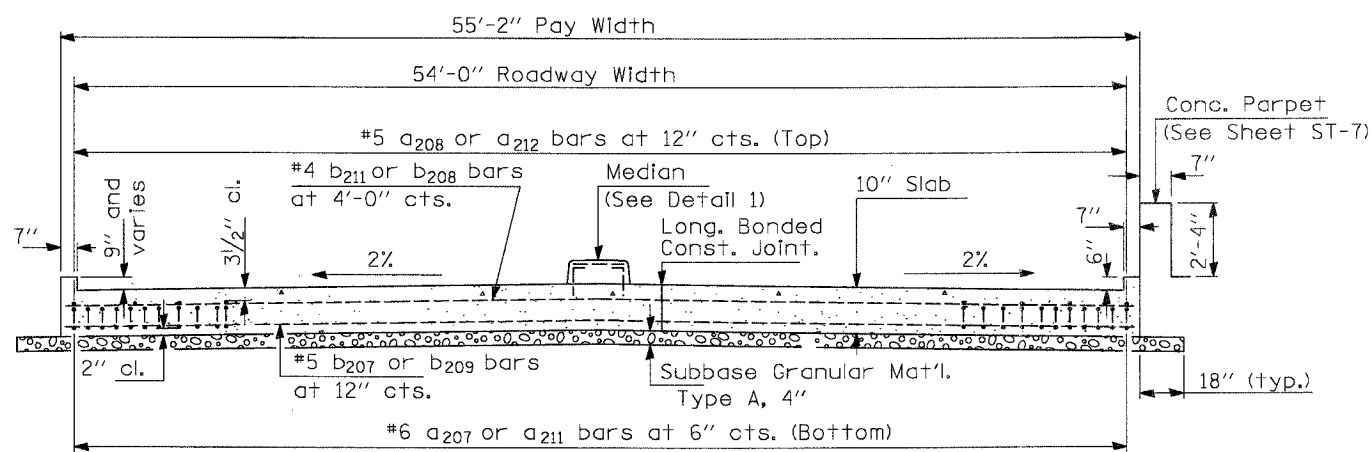
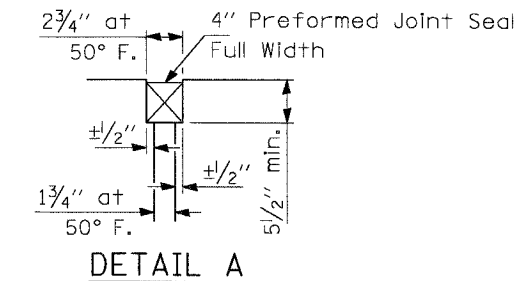
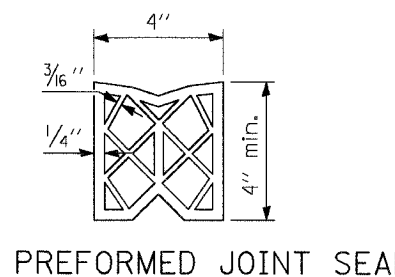
ROUTE NO.	SECTION	COUNTY	TOTAL SHEETS	SHEET NO.
FAU 1517	03-00247-00-BR	KANE	121	81
FED. ROAD DIST. NO.	ILLINOIS	FED. AID PROJECT-		
1				

SHEET NO. ST-10
ST-12 SHEETS

CONTRACT #83867

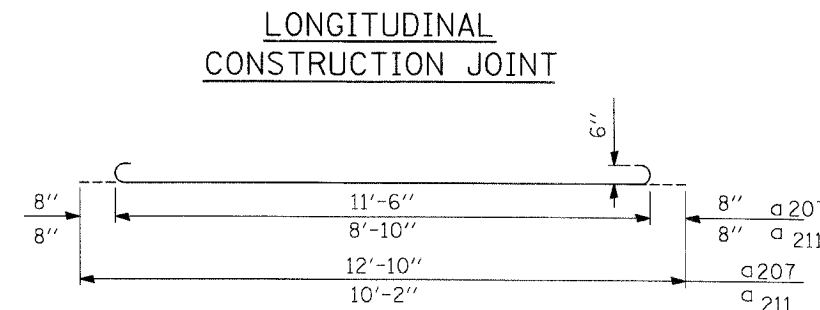
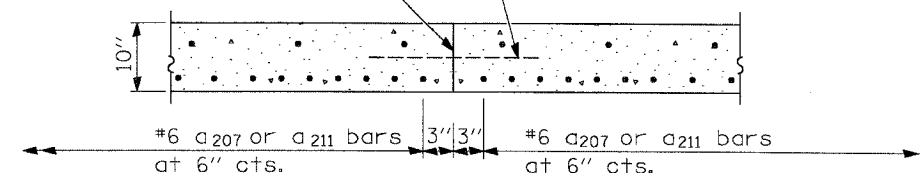


SECTION C-C
 ① Stagger #9 a₂₀₇ and a₂₁₁ bars as shown on plan - full width
 Tilt a₂₀₇ and a₂₁₁ bars in field to meet minimum clearance.

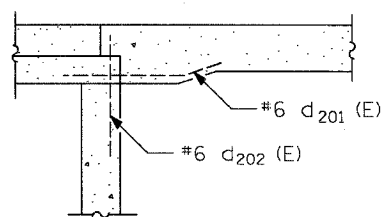


SECTION D-D
 (See Plan for Dimensions not shown)
 All reinforcement bars shall be epoxy coated.

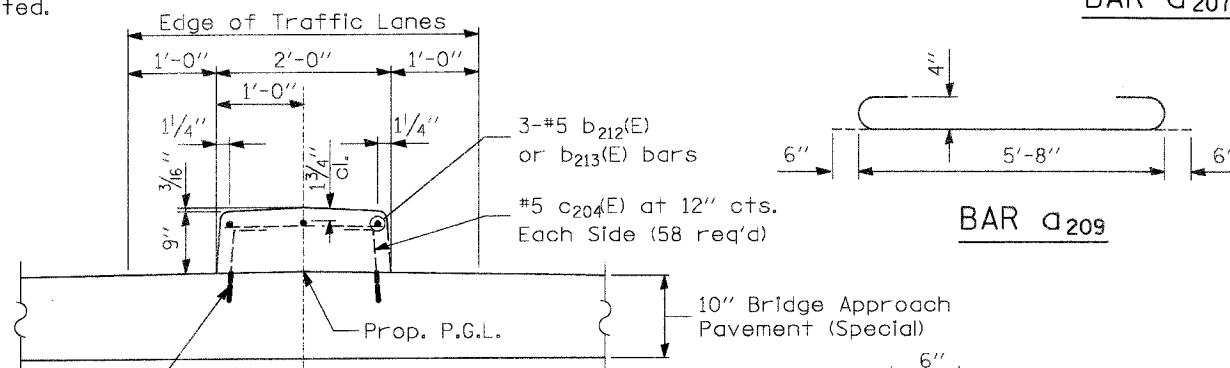
Longitudinal Construction Joint in accordance with details shown on Standard 420001.



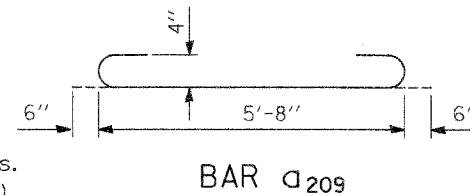
BAR a₂₀₇ OR a₂₁₁



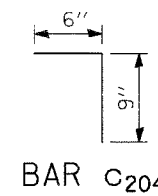
SECTION E-E
 (See Section Thru Top of Deck on Sheet ST-5)



DETAIL 1



BAR a₂₀₉



BAR c₂₀₄

DESIGN STRESSES
 f_y = 60,000 p.s.i.
 f'c = 3,500 p.s.i.
 n = 8.5

DESIGNED	AEU
CHECKED	RGD
DRAWN	WJH
CHECKED	NRF

REVISIONS	
NAME	DATE

SMITH ENGINEERING CONSULTANTS, INC.
 CIVIL/STRUCTURAL ENGINEERS AND SURVEYORS
 1100 W. WASHINGTON ST., SUITE 200, CHICAGO, ILL. 60606
 (312) 467-1000

CITY OF AURORA
 APPROACH PAVEMENT DETAILS II
 PEDESTRIAN TUNNEL
 ILLINOIS AVENUE
 OVER THE FOX RIVER
 SECTION NO. 03-00247-00-BR
 KANE COUNTY

DATE 7-28-2006

CONTRACT NO. 03-00247-00-BR SHEET 81 OF 121
 PROJECT NO. 03-00247-00-BR
 DRAWN BY WJH
 CHECKED BY NRF
 DATE 7-28-2006