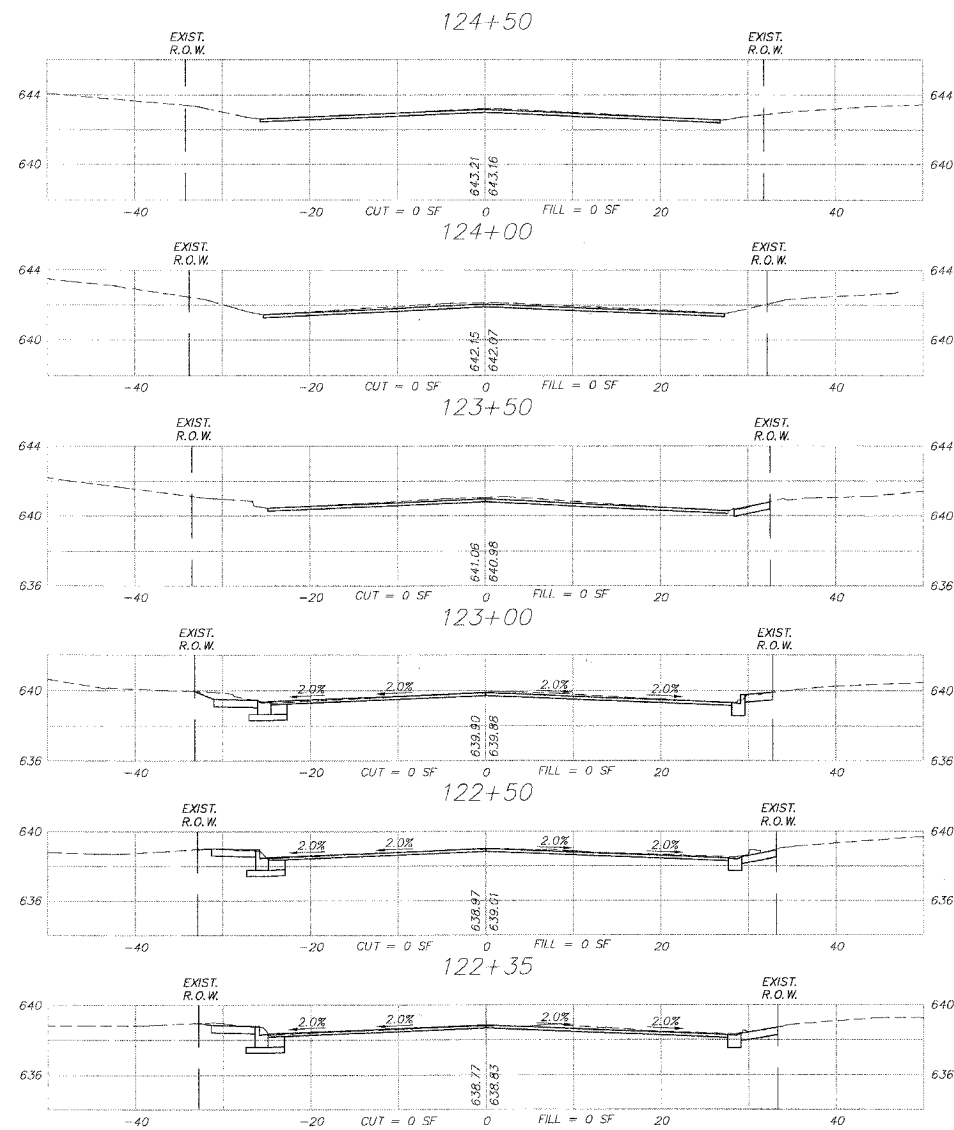


F.A.P. RTE.	SECTION	COUNTY	TOTAL SHEETS	SHEET NO.
1517	03-00247-00-BR	KANE	121	121
STA.	122+35	TO STA.	124+50	
FED. ROAD DIST. NO. 1		ILLINOIS HIGHWAY PROJECT		CONTRACT # 83867

Station	REMOVAL AND DISPOSAL OF UNSUITABLE MATERIAL					FURNISHED EXCAVATION					
	Area (sf)	Avg. Area (sf)	Length (ft)	Volume (cf)	Volume (cy)	Area (sf)	Avg. Area (sf)	Length (ft)	Volume (cf)	Volume (cy)	
10600	0					0					
10650	0	0	50	0	0.0	0	0	50	0	0.0	
10700	0	0	50	0	0.0	0	0	50	0	0.0	
10750	0	0	50	0	0.0	0	0	50	0	0.0	
10800	0	0	50	0	0.0	0	0	50	0	0.0	
10850	0	0	50	0	0.0	0	0	50	0	0.0	
10900	0	2.35	50	117.5	4.4	0	0	50	0	0.0	
10950	4.7	4.6	50	230	8.5	0	0	50	0	0.0	
11000	4.5	5.05	50	252.5	9.4	0	0	50	0	0.0	
11050	5.6	5.65	50	282.5	10.5	0	0	50	0	0.0	
11100	5.7	6	50	300	11.1	0	0	50	0	0.0	
11150	6.3	4.65	50	232.5	8.6	0	2.95	50	147.5	5.5	
11200	3	9.3	50	465	17.2	5.9	2.95	50	147.5	5.5	
11250	15.8	11.15	16	178.4	6.6	0	0	16	0	0.0	
11266	6.7	11.35	34	385.9	14.3	0	3.15	34	107.1	4.0	
11300	16	8	50	400	14.8	6.3	3.15	50	157.5	5.8	
11350	0	0	250	0	0.0	0	0	250	0	0.0	
11600	0	14.9	50	745	27.6	0	0	50	0	0.0	
11650	29.8	14.9	39	581.1	21.5	0	0	39	0	0.0	
11689	0	0	11	0	0.0	0	0	11	0	0.0	
11700	0	4.6	50	230	8.5	0	7.4	50	370	13.7	
11750	9.2	10.25	50	512.5	19.0	14.8	13.05	50	652.5	24.2	
11800	11.3	8.9	39	347.1	12.9	11.3	9.3	39	362.7	13.4	
11839	6.5	6.95	11	76.45	2.8	7.3	7.95	11	87.45	3.2	
11850	7.4	3.7	50	185	6.9	8.6	4.3	50	215	8.0	
11900	0	0	100	0	0.0	0	0	100	0	0.0	
12000	0	2.65	50	132.5	4.9	0	0	50	0	0.0	
12050	5.3	2.65	24	63.6	2.4	0	0	24	0	0.0	
12074	0	1.1	26	28.6	1.1	0	0	26	0	0.0	
12100	2.2	1.1	50	55	2.0	0	0	50	0	0.0	
12150	0	0	50	0	0.0	0	0	50	0	0.0	
12200	0	0	50	0	0.0	0	0	50	0	0.0	
12250	0	0	50	0	0.0	0	0	50	0	0.0	
12300	0	0	50	0	0.0	0	0	50	0	0.0	
12350	0	0	50	0	0.0	0	0	50	0	0.0	
12400	0	0	50	0	0.0	0	0	50	0	0.0	
12450	0	0	50	0	0.0	0	0	50	0	0.0	
Total					216	Total					83



PLOT FILE STANDARD
 C:\PLOT\122+35-124+50.DWG
 DATE: 07-28-2006 10:31:06

REVISIONS	
NO.	DATE
7.	
6.	
5.	
4.	
3.	
2.	
1.	KMA 09-13-2006

SMITH ENGINEERING CONSULTANTS, INC.
 CIVIL/STRUCTURAL ENGINEERS AND SURVEYORS
 4600 FRENCH PARKWAY, SUITE 201
 MCKENNA, ILLINOIS 60050
 PH: 815-385-1776 FAX: 815-385-1781
 www.smithengineering.com E-MAIL: see@smithengineering.com
 • MCKENNA • HUNTLEY • WYCKVILLE
 ILLINOIS PROFESSIONAL DESIGN FIRM # 184-000108

ILLINOIS DEPARTMENT OF TRANSPORTATION

 CITY OF AURORA
 ILLINOIS AVENUE OVER THE FOX RIVER
 CROSS SECTIONS
 STA. 115+50 TO STA. 122+00

 SCALE: H. 1" = 10' - V. 1" = 5'
 DRAWN BY MPL
 DATE 07-28-2006 CHECKED BY JLP