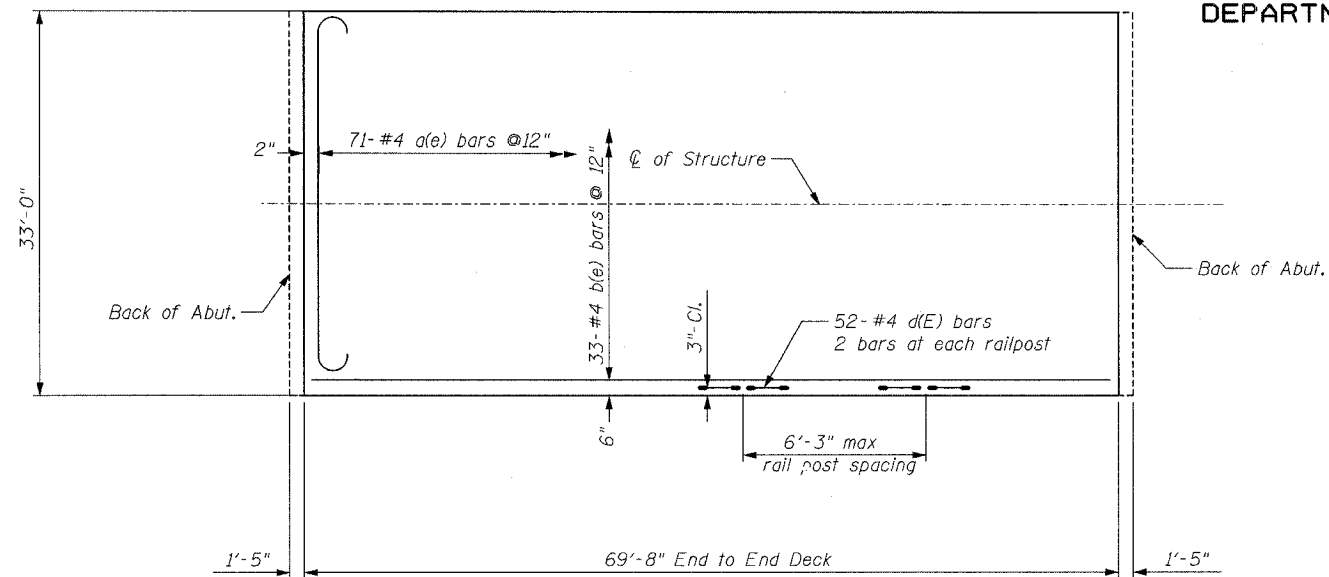
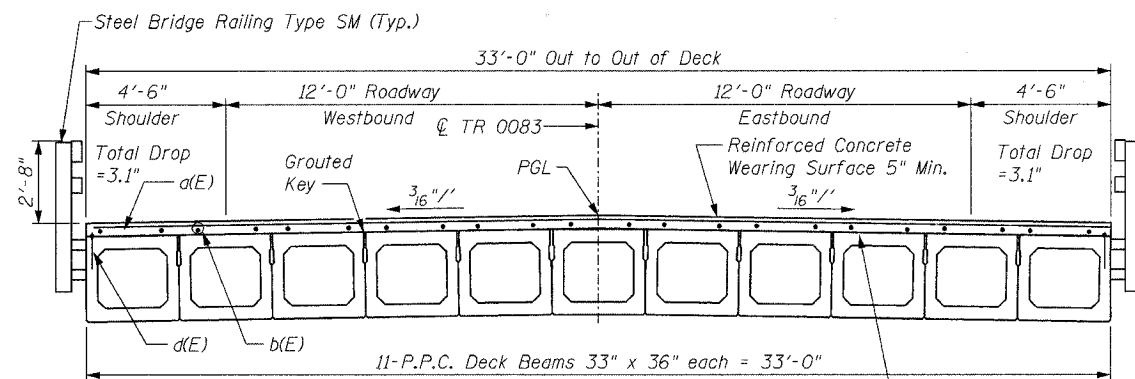


STATE OF ILLINOIS
DEPARTMENT OF TRANSPORTATION

| | | | | | |
|--------------------------------|----------------|------------------|---------------------|-----------|-------------------------|
| ROUTE NO. | SECTION | COUNTY | TOTAL SHEETS | SHEET NO. | SHEET NO. 3 6 SHEETS |
| 0083 | 02-00270-00-BR | McHENRY | 37 | 25 | |
| FEDERAL ROAD DISTRICT NUMBER 7 | | ILLINOIS PROJECT | CONTRACT NO.: 83872 | | |

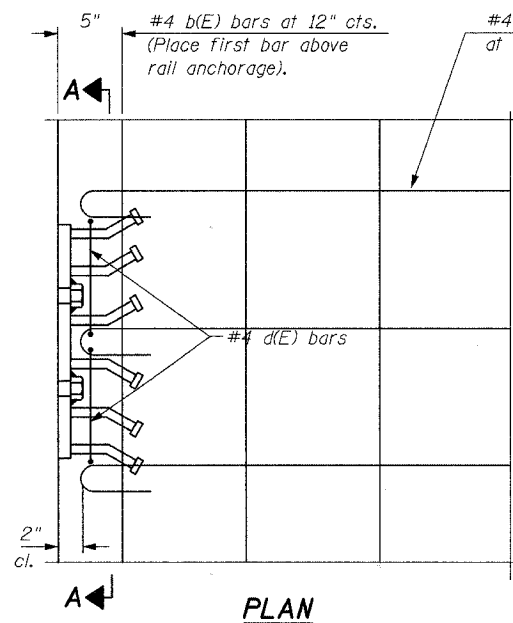


PLAN

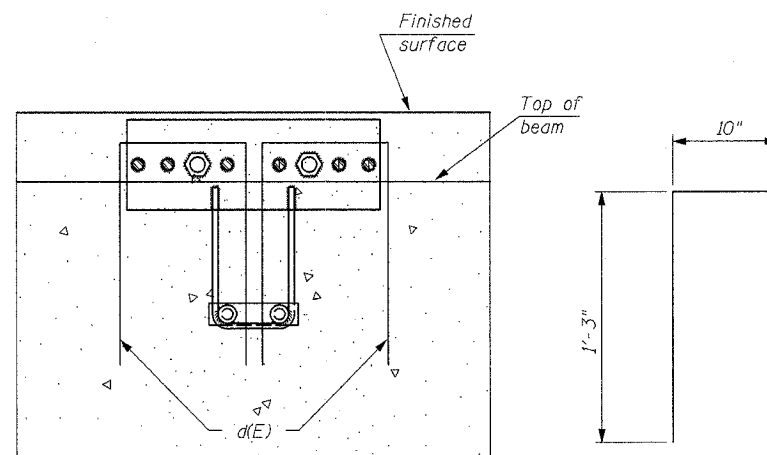


CROSS SECTION
(Looking East)

Place Hand Cement Mortar
Fairing Cause As Necessary
Prior To Placing Concrete
Wearing Surface (Tap At
Each Longitudinal Joint)

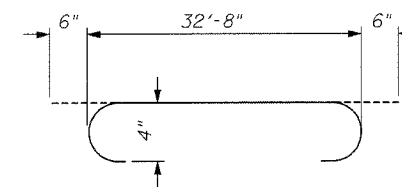


PLAN

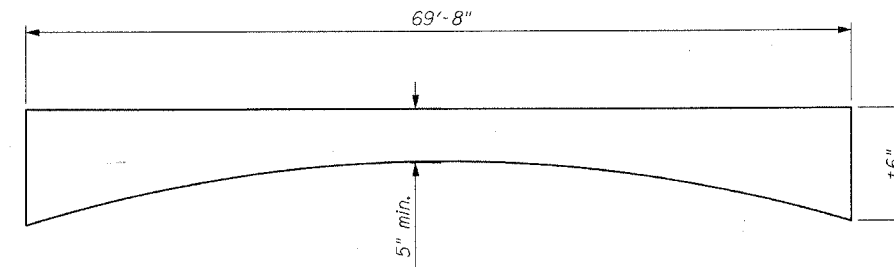


SECTION A-A

d(E) Bar



d(E) Bar



REINFORCED CONCRETE SURFACE WEARING PROFILE

BAR LIST

| Bar | No. | Size | Length | SHAPE |
|----------------------------------|-----|------|---------|-------|
| a(E) | 71 | #4 | 33'-8" | |
| b(E) | 33 | #4 | 69'-4" | |
| d(E) | 52 | #4 | 3'-4" | |
| Concrete Wearing Surface | | | Cu. Yd. | 40 |
| Reinforcement Bars, Epoxy Coated | | | Lbs. | 3240 |
| Protective Coat | | | Sq. Yd. | 260 |

Bars Indicated (E) Shall Be Epoxy Coated

NOTES:

The rail anchorage shall be cast with the beam and the wearing surface shall be cast in the field. Form work necessary for the wearing surface may be secured utilizing the bottom rail anchorage inserts and/or additional inserts cast into the beam. Drilling into the beam will not be permitted.

| | |
|----------|-----|
| DESIGNED | EAK |
| CHECKED | AJS |
| DRAWN | RAP |
| CHECKED | JAR |



ILLINOIS DEPARTMENT OF TRANSPORTATION
SUPERSTRUCTURE
T.R. 0083 (STREIT ROAD) OVER
NORTH BRANCH OF THE KISHWAUKEE RIVER
T.R. 0083 SECTION 02-00270-00-BR
McHENRY COUNTY
S.N. 056-3171

SCALE: DATE: 8/8/2006