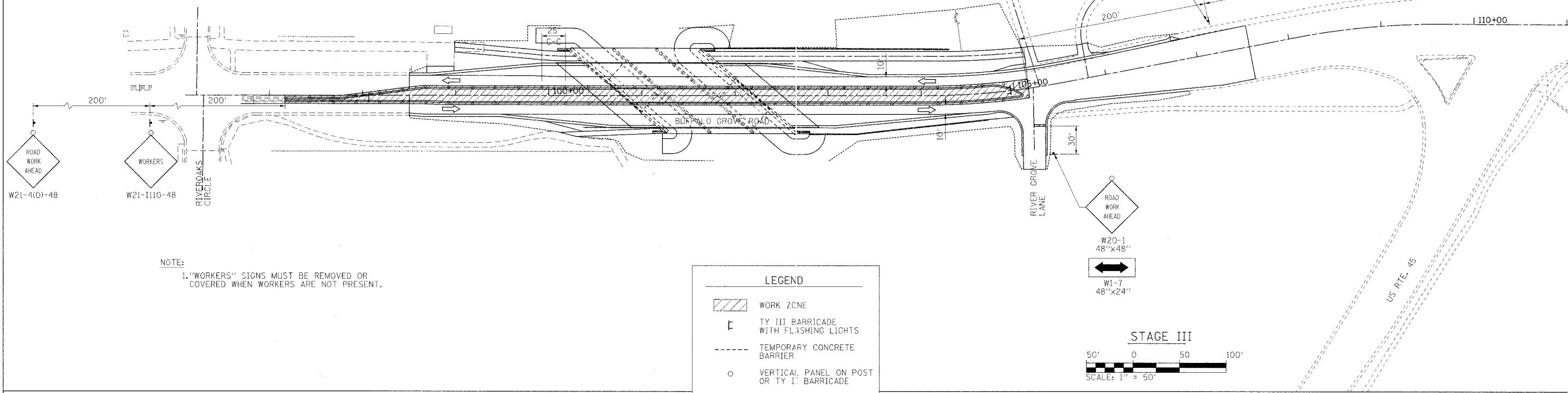
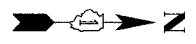


F.A. RTE.	SECTION	COUNTY	TOTAL SHEETS	SHEET NO.
2666	00-00254-01-BR	LAKE	70	10
STA. 98+50.00	TO STA. 106+85.00			
FED. ROAD DIST. NO.	ILLINOIS	FED. AID PROJECT		
PROJECT NO. BHM-8003(213) CONTRACT NO. 83875				



NOTE:  
1. "WORKERS" SIGNS MUST BE REMOVED OR COVERED WHEN WORKERS ARE NOT PRESENT.

LEGEND	
	WORK ZONE
	TY III BARRICADE WITH FLASHING LIGHTS
	TEMPORARY CONCRETE BARRIER
	VERTICAL PANEL ON POST OR TY I BARRICADE
	TEMPORARY RAISED REFLECTIVE PAVEMENT MARKER TYPE 2 (100' CTS)
	FLEXIBLE DELINEATOR (100' CTS)
	SIGN ON PORTABLE OR PERMANENT SUPPORT
	ARROW BOARD
	TEMPORARY PAVEMENT

DATE	BY
DATE	BY
DATE	BY

DATE	BY
DATE	BY
DATE	BY

I:\aklec0220113\drawsheet\sheet2-1.dgn

REVISIONS	
NAME	DATE

ILLINOIS DEPARTMENT OF TRANSPORTATION

**MOT - STAGE 3**  
BUFFALO GROVE ROAD  
SHEET 2 OF 2

SCALE: VERT.:  
HORIZ.: 1"=50'  
DATE: 7/21/06

DRAWN BY: SMH  
CHECKED BY: PWK

