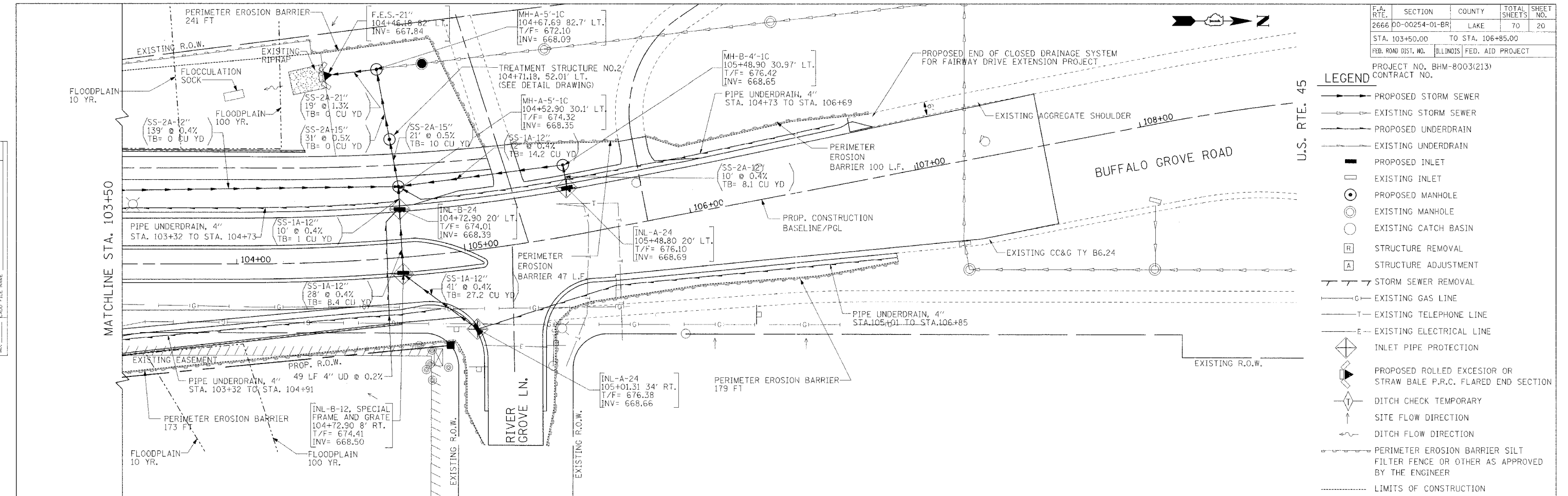


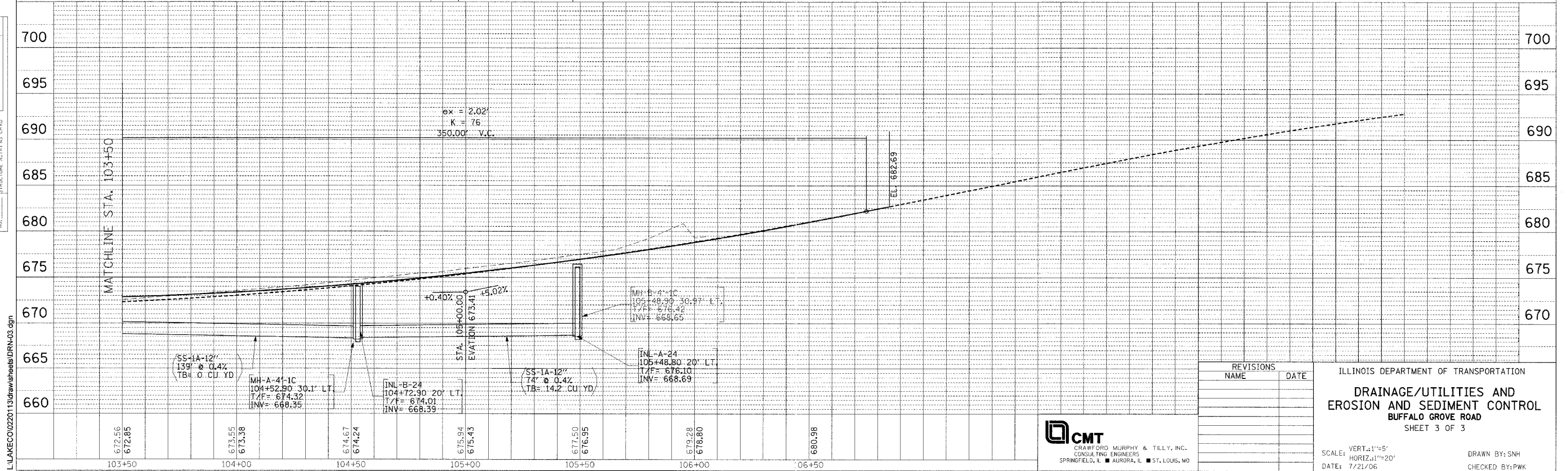
PLAN	SURVEYED	DATE
	PLOTTED	
	NOTE BOOK	
	REVISED	
	BY	
	NO.	
	STRUCTURE	
	NOTATIONS	
	CHRD	

PROFILE	SURVEYED	DATE
	PLOTTED	
	NOTE BOOK	
	REVISED	
	BY	
	NO.	
	STRUCTURE	
	NOTATIONS	
	CHRD	



F.A. RTE.	SECTION	COUNTY	TOTAL SHEETS	SHEET NO.
2666	00-00254-01-BR	LAKE	70	20
STA. 103+50.00	TO STA. 106+85.00			
FED. ROAD DIST. NO.	ILLINOIS	FED. AID PROJECT		

- PROJECT NO. BHM-8003(213)
CONTRACT NO.
- LEGEND**
- PROPOSED STORM SEWER
 - EXISTING STORM SEWER
 - PROPOSED UNDERDRAIN
 - EXISTING UNDERDRAIN
 - PROPOSED INLET
 - EXISTING INLET
 - PROPOSED MANHOLE
 - EXISTING MANHOLE
 - EXISTING CATCH BASIN
 - [R] STRUCTURE REMOVAL
 - [A] STRUCTURE ADJUSTMENT
 - STORM SEWER REMOVAL
 - EXISTING GAS LINE
 - EXISTING TELEPHONE LINE
 - EXISTING ELECTRICAL LINE
 - ◆ INLET PIPE PROTECTION
 - ◆ PROPOSED ROLLED EXCESIOR OR STRAW BALE P.R.C. FLARED END SECTION
 - ◆ DITCH CHECK TEMPORARY
 - SITE FLOW DIRECTION
 - DITCH FLOW DIRECTION
 - PERIMETER EROSION BARRIER SILT FILTER FENCE OR OTHER AS APPROVED BY THE ENGINEER
 - LIMITS OF CONSTRUCTION



REVISIONS	NAME	DATE

ILLINOIS DEPARTMENT OF TRANSPORTATION
DRAINAGE/UTILITIES AND EROSION AND SEDIMENT CONTROL
BUFFALO GROVE ROAD
SHEET 3 OF 3

SCALE: VERT.: 1"=5'
HORIZ.: 1"=20'
DATE: 7/21/06

DRAWN BY: SNH
CHECKED BY: PWK

CMT
CRAWFORD MURPHY & TILLY, INC.
CONSULTING ENGINEERS
SPRINGFIELD, IL ■ AURORA, IL ■ ST. LOUIS, MO

L:\LAKE0020113\draw\sheet\DRN-03.dgn