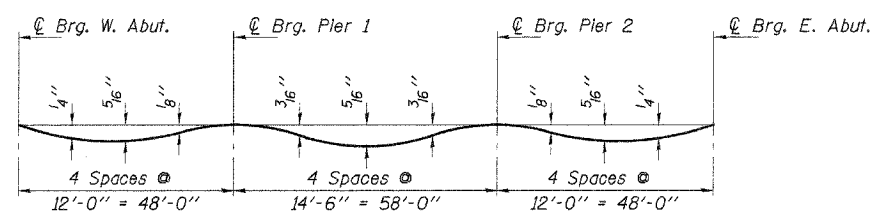
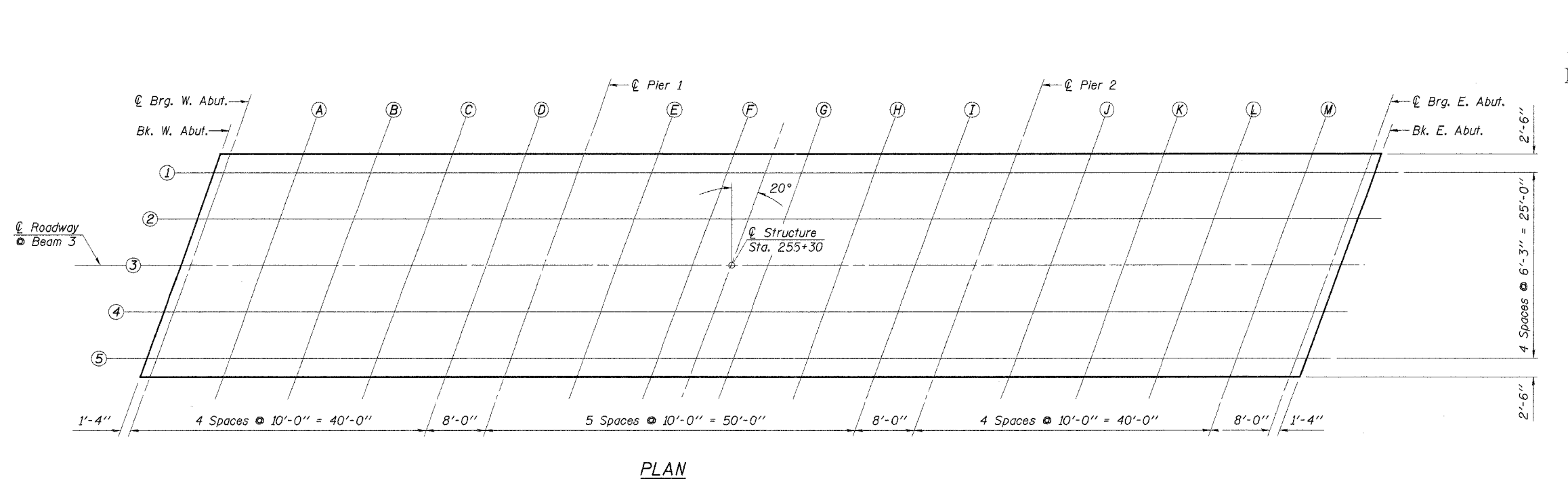
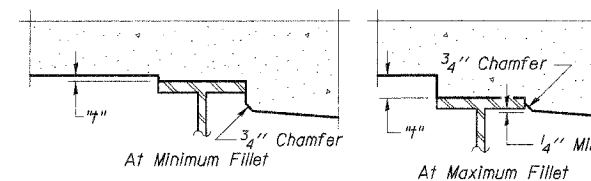


ROUTE NO.	SECTION	COUNTY	TOTAL SHEETS	SHEET NO.
C.H. 5	04-00163-00-BR	STEPHENSON	29	8
		ILLINOIS		

Sheet 3 of 20 CONTRACT NO. 85391



Note: The above deflections are not to be used in the field if the engineer is working from the grade elevations adjusted for dead load deflections as shown on Sheets 4 & 5.



To determine "f": After all structural steel has been erected, elevations of the top flanges of the beams shall be taken at intervals shown below. These elevations subtracted from the "Theoretical Grade Elevations Adjusted for Dead Load Deflection" shown on Sheets 4 & 5 of 20, minus slab thickness, equals the fillet heights "f" above top flange of beams.

DESIGNED	A.R.K.
CHECKED	S.F.M. & F.J.S.
DRAWN	S.A.P.
CHECKED	A.R.K. & F.J.S.
E-S	4-30-97

TOP OF SLAB ELEVATIONS

SECTION 04-00163-00-BR
F.A.S. ROUTE 60 - C.H. 5
STEPHENSON COUNTY
STATION 255+30

4440 ASH GROVE SPRINGFIELD, IL 62711 (217) 793-8600 oasinc@insightbb.com	OZYURT AND STONE, INC. CONSULTING ENGINEERS	JOB NO.: 0527 FILE: 0527SLABLDGN DATE: 03/07/06
---	---	---