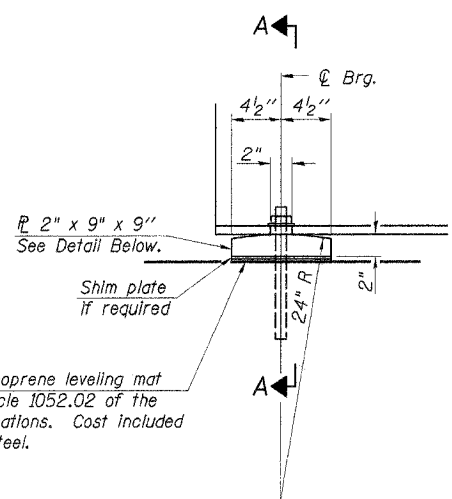


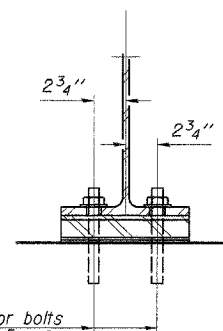
ROUTE NO.	SECTION	COUNTY	TOTAL SHEETS	SHEET NO.
C.H. 5	04-00163-00-BR	STEPHENSON	29	16
		ILLINOIS		

Sheet 11 of 20

CONTRACT NO. 85391



ELEVATION AT ABUTMENTS



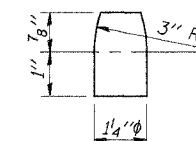
SECTION A-A

1/8" elastomeric neoprene leveling mat according to Article 1052.02 of the Standard Specifications. Cost included with Structural Steel.

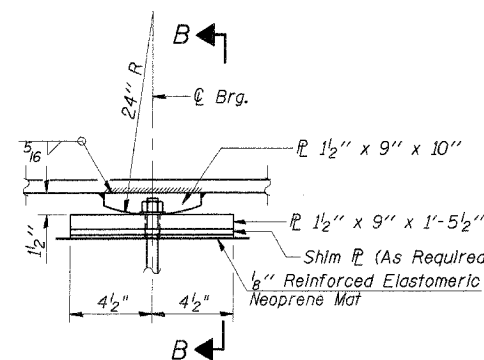
1" ϕ x 12" anchor bolts with 2 1/4" x 2 1/4" x 5/16" \mathbb{R} washer under nut. 1 3/8" x 2" slotted hole in flange. 1/2" ϕ holes in bearing plate.

ABUTMENT BEARING

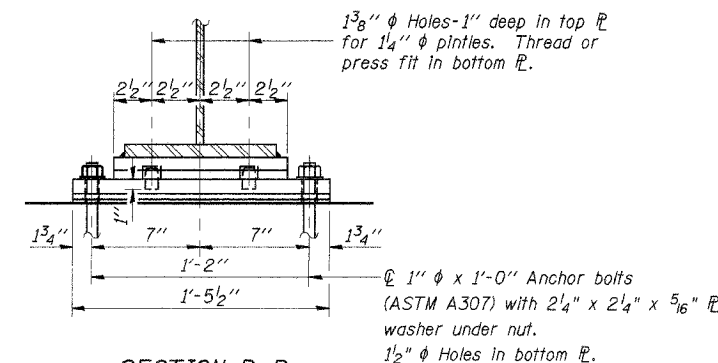
10 Required
Weight included with Structural Steel.



PINTLE



ELEVATION AT PIERS 1 & 2

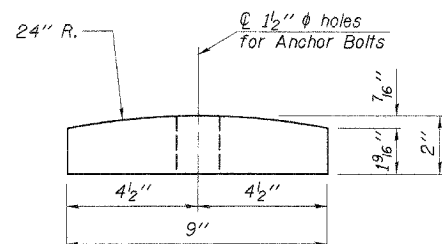


SECTION B-B

FIXED BEARING

10 Required
Weight included with Structural Steel.

Notes: Anchor bolts at fixed bearings may be built into the masonry.
See sheet 12 of 20 for Anchor Bolt installation.



BEARING PLATE DETAIL

DESIGNED	A.R.K.
CHECKED	S.F.M. & F.J.S.
DRAWN	S.A.P.
CHECKED	A.R.K. & F.J.S.

I-2-E2 9-1-03

Work this Sheet with Sheets 9 & 10 of 20

BEARING DETAILS

SECTION 04-00163-00-BR
F.A.S. ROUTE 60 - C.H. 5
STEPHENSON COUNTY
STATION 255+30

4440 ASH GROVE
SPRINGFIELD, IL 62711
(217) 793-8600
ossinc@insightbb.com

OZYURT AND STONE, INC.
CONSULTING ENGINEERS

JOB NO.: 0527
FILE: 0527BRG.DGN
DATE: 03/07/06