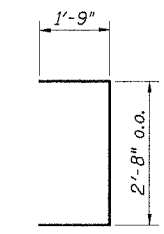
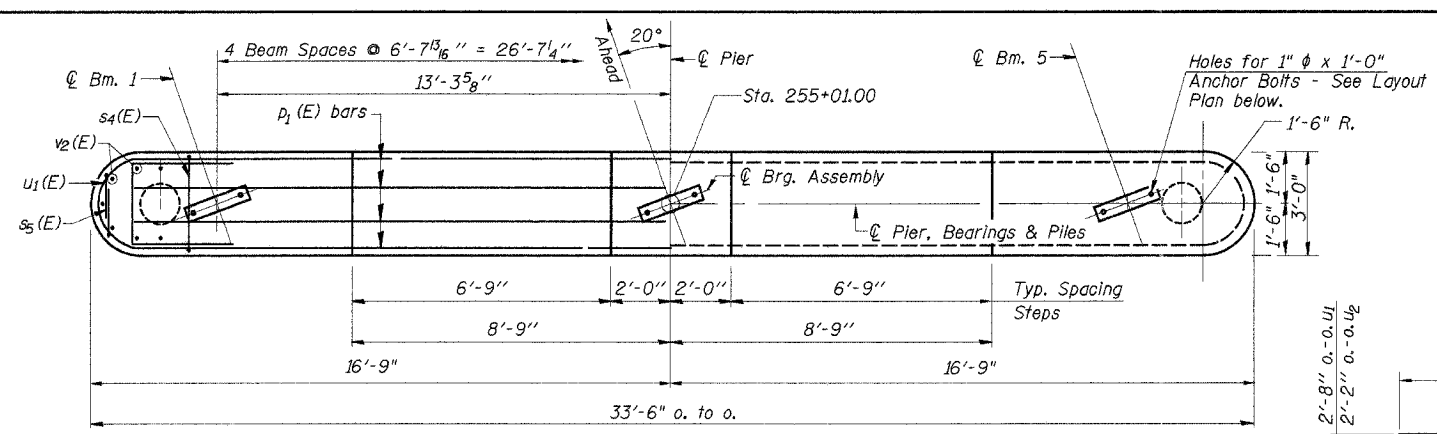
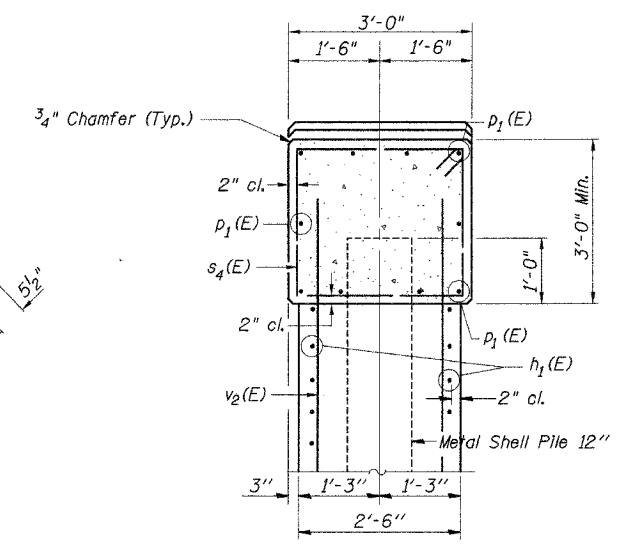
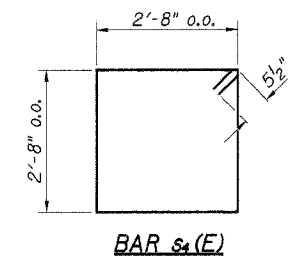
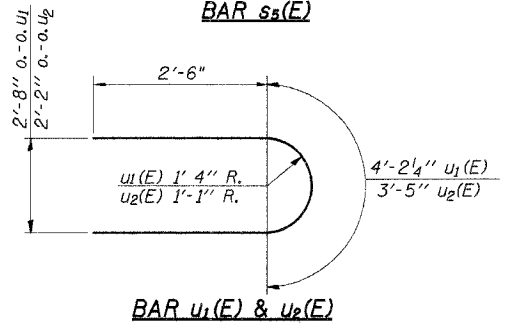


ROUTE NO.	SECTION	COUNTY	TOTAL SHEETS	SHEET NO.
C.H. 5	04-00163-00-BR	STEPHENSON	29	20
ILLINOIS		CONTRACT NO. 85391		

Sheet 15 of 20



MIN. BAR LAP
 #5 ----- 1'-4"
 #6 ----- 1'-7"



NOTES

Space Reinforcement in cap to miss Anchor Bolts.

Pour Steps monolithically with cap.

All edges shall have the standard 3/4" Chamfer except as noted.

Anchor Bolts at fixed bearings may be built into the masonry.

PILE DATA

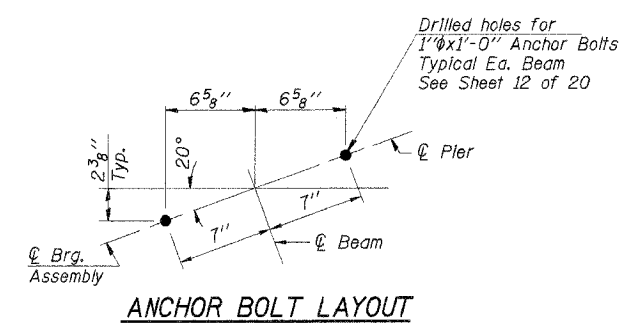
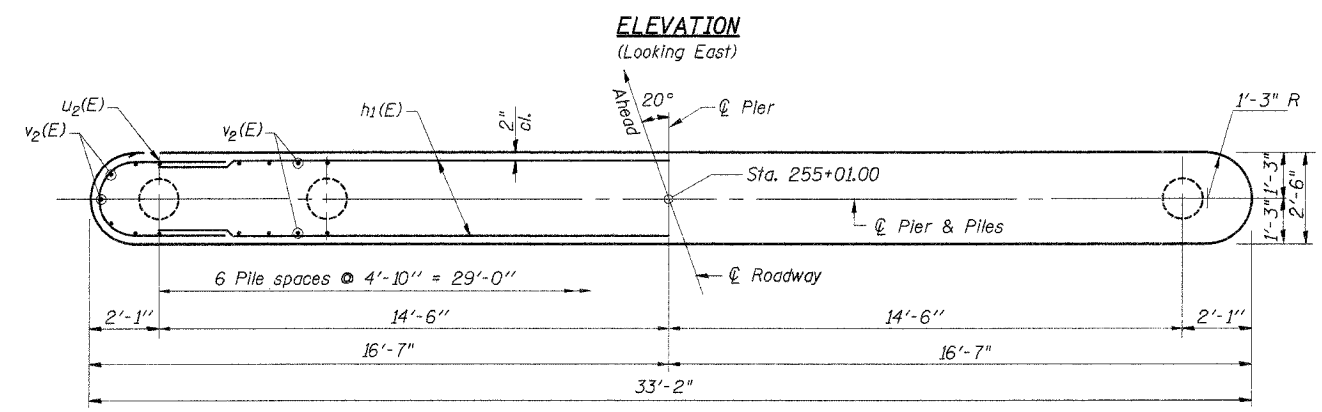
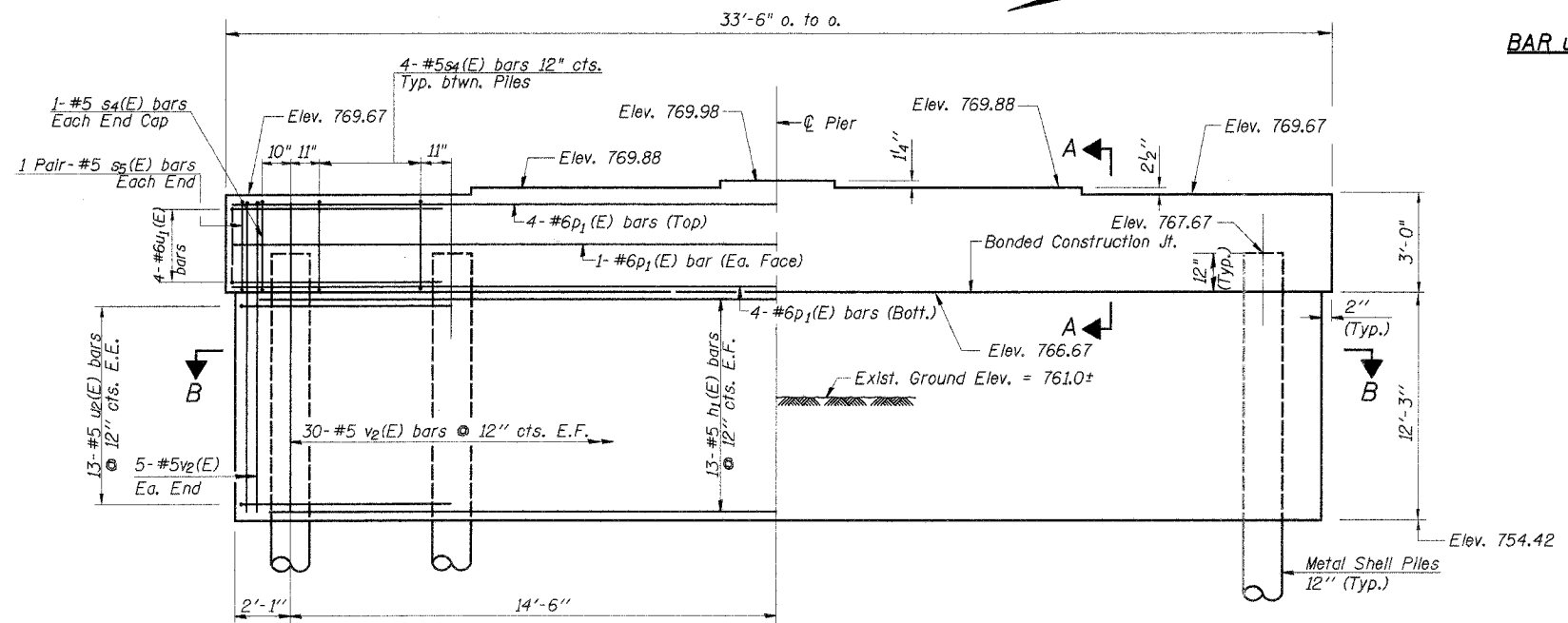
Type: _____ Metal Pile Shell 12"
 Capacity: _____ 55 Ton/Pile
 Est. Length: _____ 62 Ft./Pile
 No. Required: _____ 7*

* Includes 1 Test Pile to be driven in a permanent location.

BILL OF MATERIAL

BAR	NO.	SIZE	LENGTH	SHAPE
h ₁ (E)	26	#5	30'-8"	—
p ₁ (E)	10	#6	30'-6"	—
s ₄ (E)	26	#5	11'-7"	□
s ₅ (E)	4	#5	6'-2"	□
u ₁ (E)	8	#6	9'-3"	U
u ₂ (E)	26	#5	8'-5"	U
v ₂ (E)	70	#5	13'-7"	—
Concrete Structures			Cu. Yd.	45.7
Reinforcement Bars, Epoxy Coated			Pound	2,960
Furnishing Metal Pile Shells 12"			Foot	372
Driving and Filling Shells			Foot	372
Test Pile Metal Shell			Each	1
Underwater Structure Excavation Protection - Location 1			Each	1
Structure Excavation			Cu. Yd.	60

Reinforcement bars designated (E) shall be Epoxy Coated



DESIGNED	A.R.K.
CHECKED	S.F.M. & F.J.S.
DRAWN	S.A.P.
CHECKED	A.R.K. & F.J.S.

PIER 1
 SECTION 04-00163-00-BR
 F.A.S. ROUTE 60 - C.H. 5
 STEPHENSON COUNTY
 STATION 255+30

4440 ASH GROVE SPRINGFIELD, IL 62711 (217) 793-8600 oasinc@insightbb.com	OZYURT AND STONE, INC. CONSULTING ENGINEERS	JOB NO.: 0527 FILE: 0527PIER1.DGN DATE: 03/07/06
-----------------------------------------------------------------------------------	-------------------------------------------------------	--------------------------------------------------------