

FAS RTE	SECTION	COUNTY	TOTAL SHEETS	SHEET NO.
TR 205	05-09126-00-BR 05-17134-00-BR	HENRY	11	2
F.H.W.A. REG.	ILLINOIS	PROJECT BR05-073(53)		

BM #1 - X in Corner of Existing Wingwall  
Sta. 204+14, 3.2' Right  
Elev. 200.24  
To Be Relocated Prior to Construction  
To Distance from Proposed Alignment  
To ROW

**Seeding Quantities**

Seeding, Class 6 0.51 acre  
Nitrogen Fert. Nutr. 46 lbs  
Phosphorous Fert. Nutr. 46 lbs  
Potassium Fet. Nutr. 46 lbs  
Mulch Method 2 1 tons

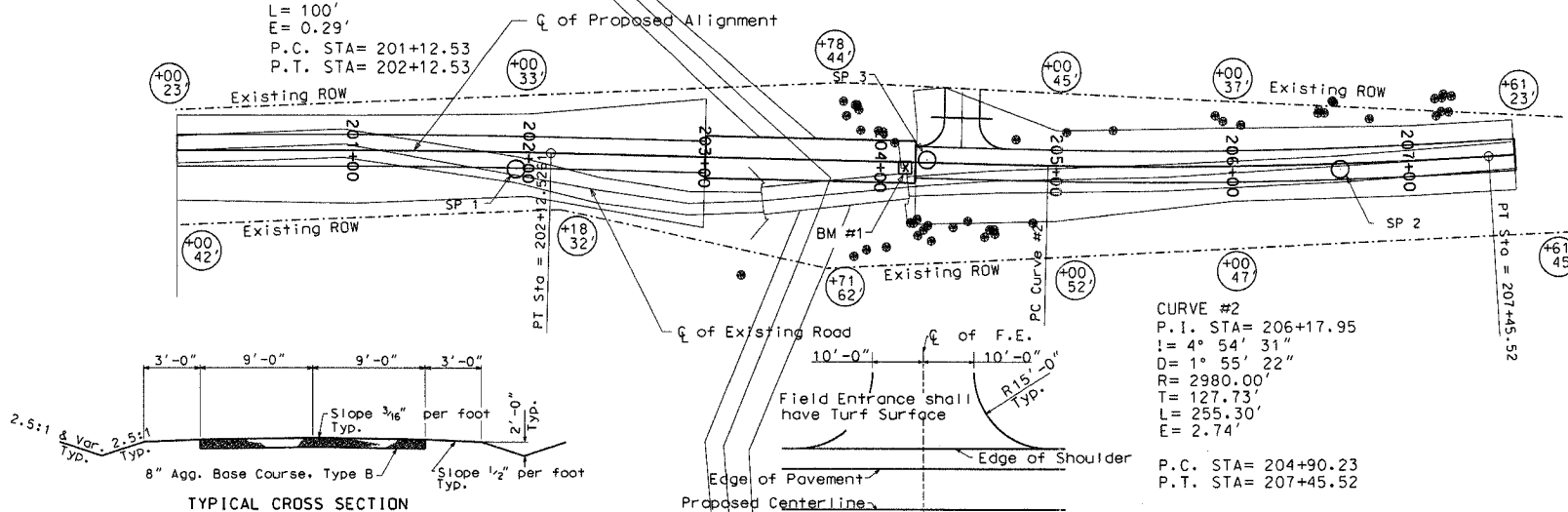
Existing structure: A single span truss bridge 80' long skewed 0 degrees on wood pile bent abutments.

Proposed Structure: A three-span precast prestressed concrete deck beam bridge 120' long (40-40-40) skewed 0 degrees.

**CURVE #1**  
P.I. STA= 201+62.53  
I= 1° 20' 47"  
D= 1" 20' 47"  
R= 4255.72  
T= 50'  
L= 100'  
E= 0.29'  
P.C. STA= 201+12.53  
P.T. STA= 202+12.53

**Aggregate Base Course - Type B**  
STA. 200+00 to 207+60 586 TON

**Pipe Culvert, 15", Class D, Type 1**  
FEL 204+40 30 Ft



SCALES:  
1" = 50' HOR  
1" = 5' VER

**Tree Removal (6 to 15 Units Dia.)**

Sta. 203+78	34' Lt.	13 Units
Sta. 203+80	26' Lt.	7 Units
Sta. 203+85	32' Lt.	8 Units
Sta. 203+86	32' Lt.	8 Units
Sta. 203+87	29' Lt.	10 Units
Sta. 203+88	18' Lt.	12 Units
Sta. 203+98	17' Lt.	9 Units
Sta. 204+01	17' Lt.	8 Units
Sta. 204+08	11' Lt.	9 Units
Sta. 204+18	35' Rt.	8 Units
Sta. 204+30	45' Rt.	7 Units
Sta. 204+42	37' Rt.	8 Units
Sta. 205+05	19' Lt.	14 Units

TOTAL 121 Units

**Tree Removal (over 15 Units Dia.)**

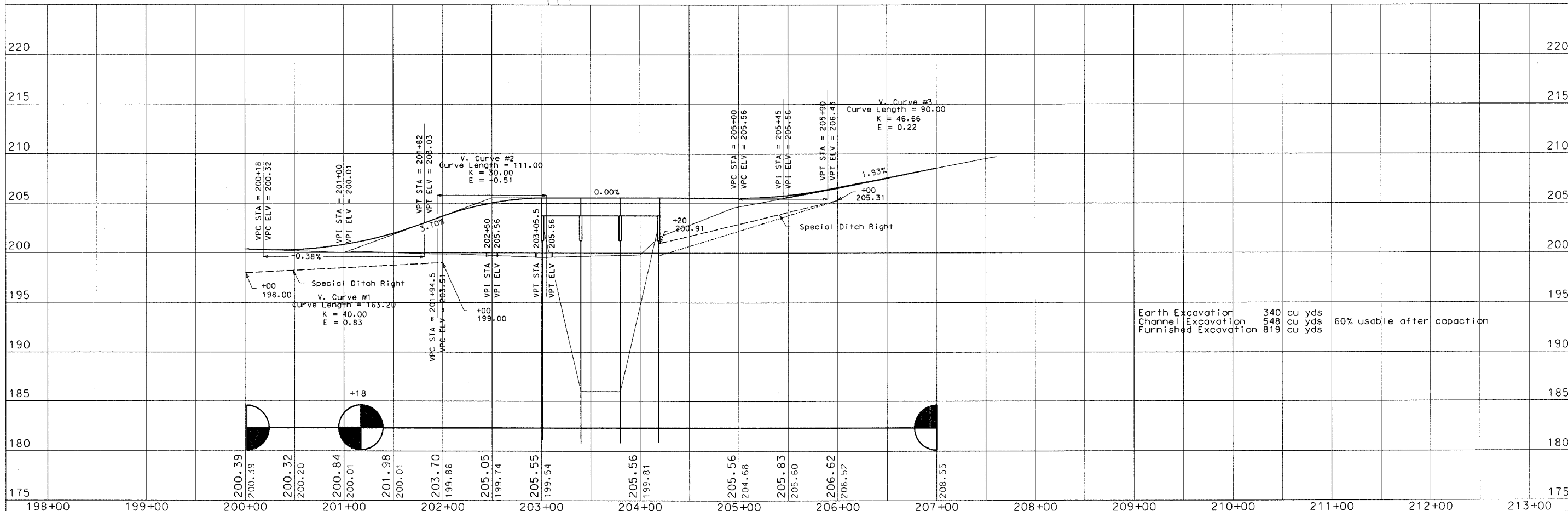
Sta. 204+19	35' Rt.	17 Units
Sta. 204+21	33' Rt.	23 Units
Sta. 204+22	42' Rt.	28 Units
Sta. 204+25	39' Rt.	24 Units
Sta. 204+28	36' Rt.	20 Units
Sta. 204+50	33' Rt.	18 Units
Sta. 204+77	14' Lt.	21 Units

TOTAL 151 Units

**COORDINATES NORTHING EASTING**

SP 1	10000.00	10000.00
SP 2	10000.00	10468.33
SP 3	10005.51	10233.53
POT 1	10010.44	9907.31
P1 1	10010.35	9969.84
P1 2	9999.39	10425.14
POT 2	10008.19	10567.76

POT #1 @ Sta. 200+00 (BOP)  
PI #1 @ Sta. 201+62.53  
PI #2 @ Sta. 206+17.95  
POT #2 @ Sta. 207+60.7 (EOP)  
CALL J.U.L.I.E.  
BEFORE YOU DIG  
1-800-892-0123



Earth Excavation 340 cu yds  
Channel Excavation 548 cu yds  
Furnished Excavation 819 cu yds  
60% usable after compaction