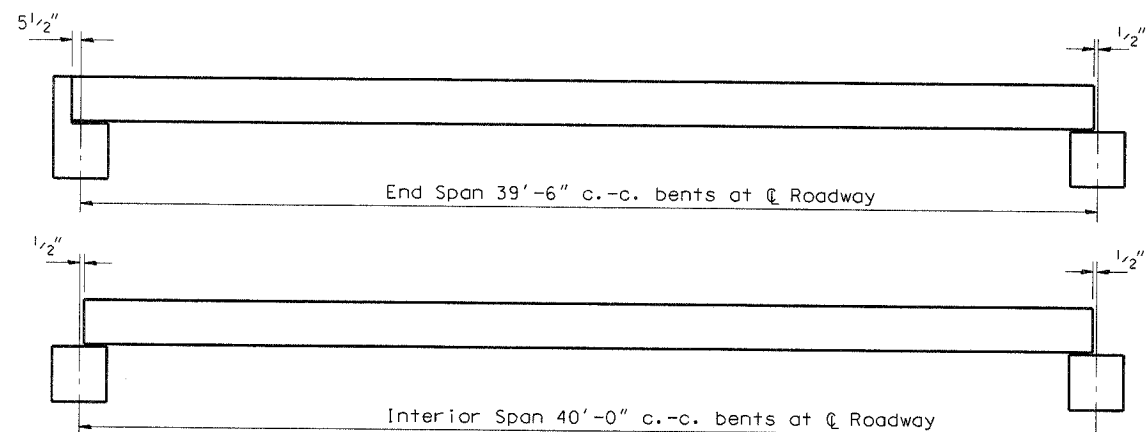
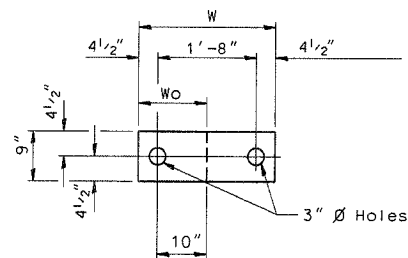
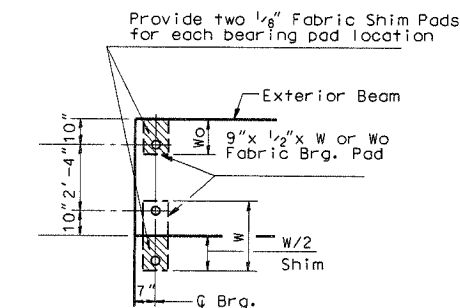


FAS RTE	SECTION	COUNTY	TOTAL SHEETS	SHEET NO.
TR 205	05-09126-00-BR 05-17134-00-BR	HENRY	11	5
F.H.W.A. REG.		ILLINOIS	PROJECT BROS-073(53)	

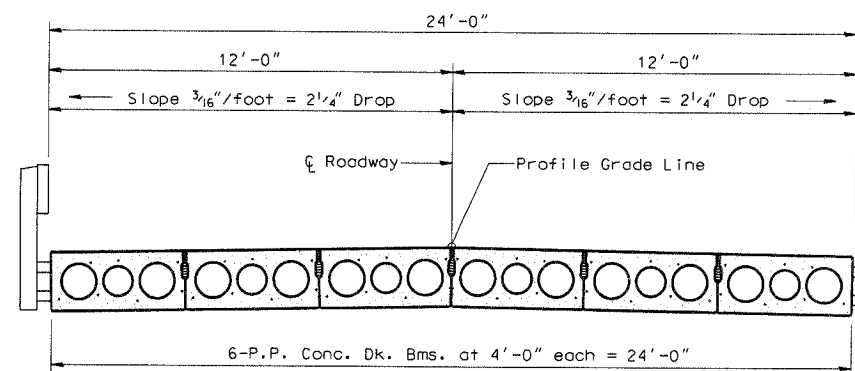


TYPICAL ELEVATIONS

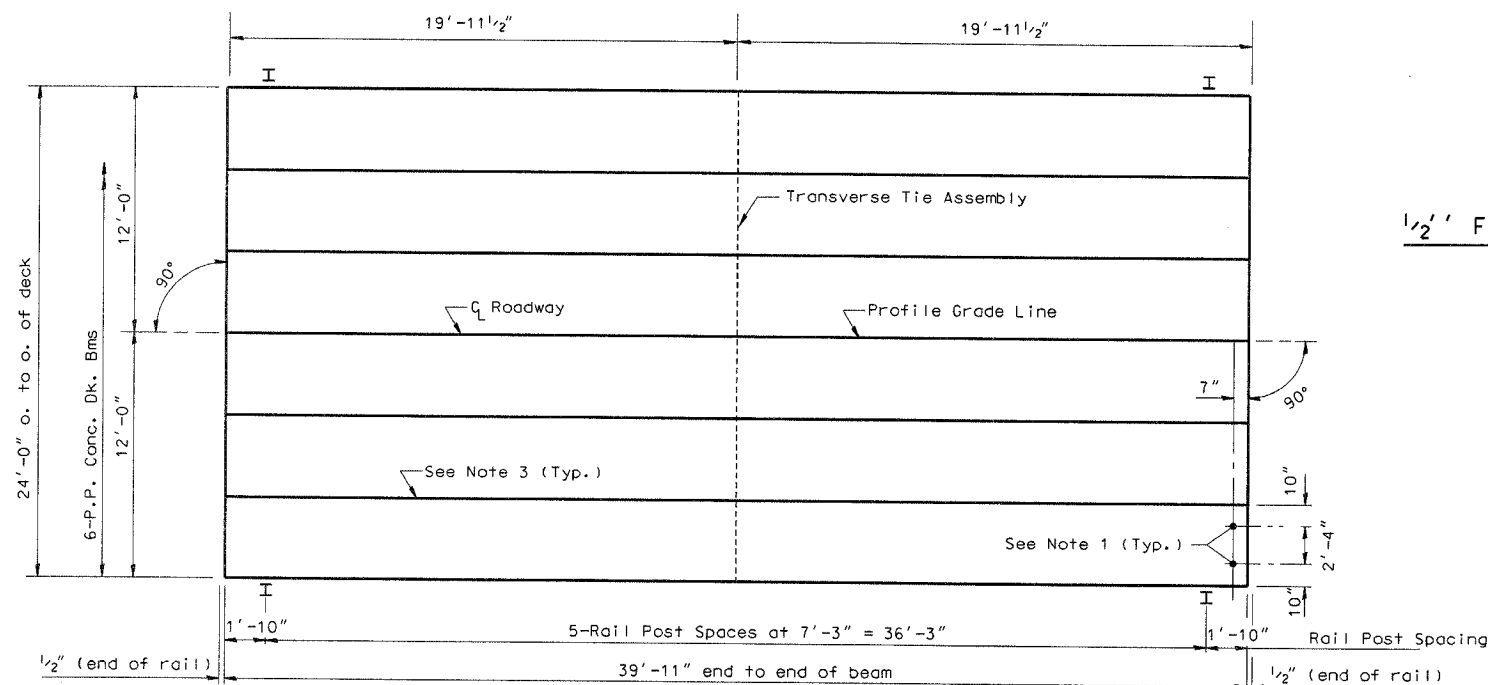


Beam	W	$W_o$
48"	2'-5"	1'-2 1/2"

$\frac{1}{2}$ " FABRIC BRG. PAD DETAILS



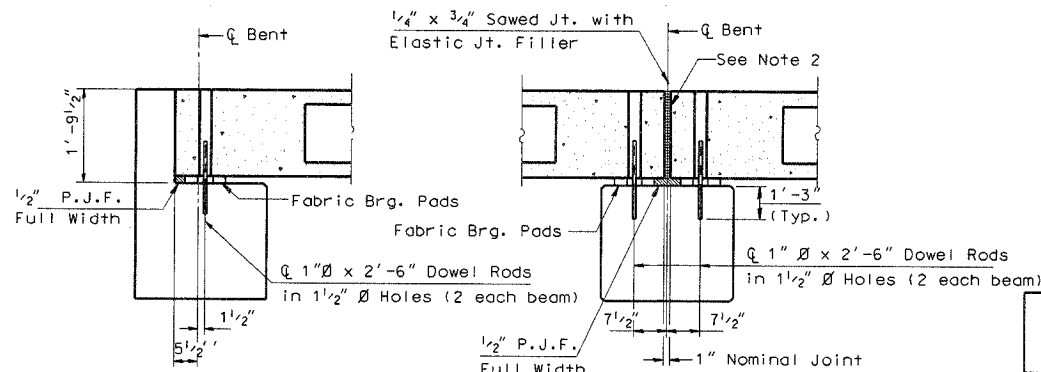
CROSS SECTION



PLAN

NOTES

- After beams have been erected, holes shall be drilled into substructure and anchor dowels placed. Dowel holes shall be filled with non-shrink grout to top of beam and allowed to cure min. 24 hrs. prior to grouting the shear keys.
- Nominal 1" joint at  $\bar{C}$  Pier shall be filled with non-shrink grout.
- Longitudinal keys shall be grouted.
- The 1"  $\bar{\varnothing}$  rods in the transverse tie assembly shall be tightened to a snug fit and the threads set. Pockets that receive transverse tie bar outside shall be filled with grout after transverse tie assembly is in place.



SECTION AT ABUTS.

(Along  $\bar{C}$  Beams)

SECTION AT PIERS

(Along  $\bar{C}$  Beams)

QUANTITIES FOR ONE SPAN

P.P. Conc. Dk. Bm. 21" Dp.	958 Sq. Ft.
Steel Railing	80 Ft.

P.P.C. DECK BEAM SUPERSTRUCTURE

24' RDWY.	21" BMS.	40' SPAN	0° SKEW
-----------	----------	----------	---------