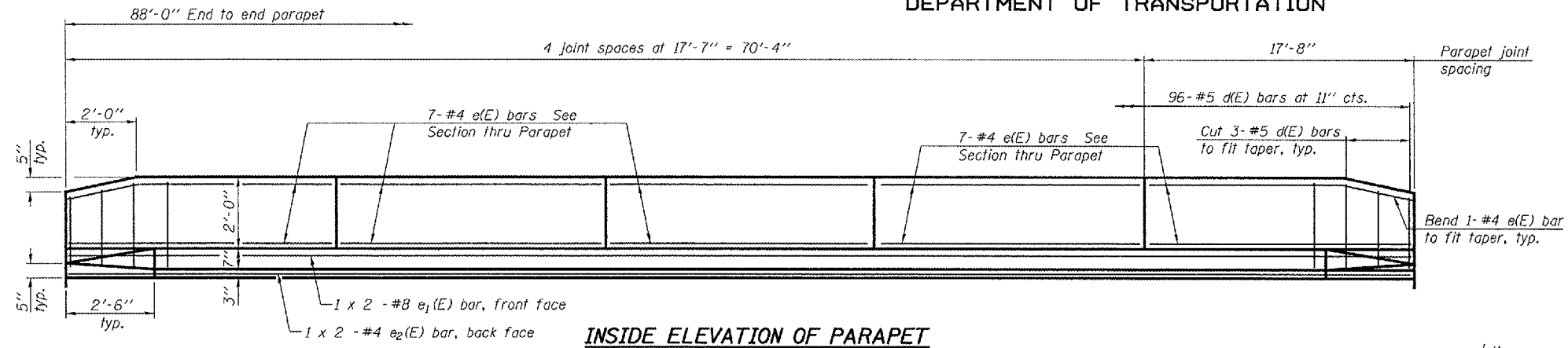


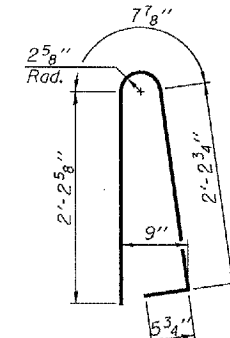
STATE OF ILLINOIS
DEPARTMENT OF TRANSPORTATION

ROUTE NO. F.A.P. 310	SECTION (101BY) BR	COUNTY WARREN	SHEET NO. 97 41	SHEET NO. 16 SHEETS
FED. ROAD DIST. NO. 7		ILLINOIS	FED. AID PROJECT	

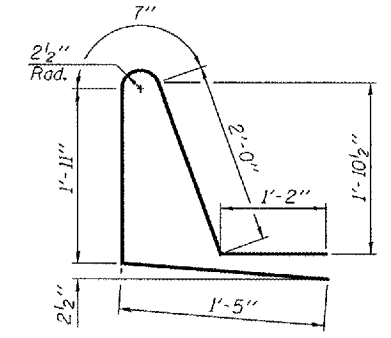
Contract #88798



INSIDE ELEVATION OF PARAPET



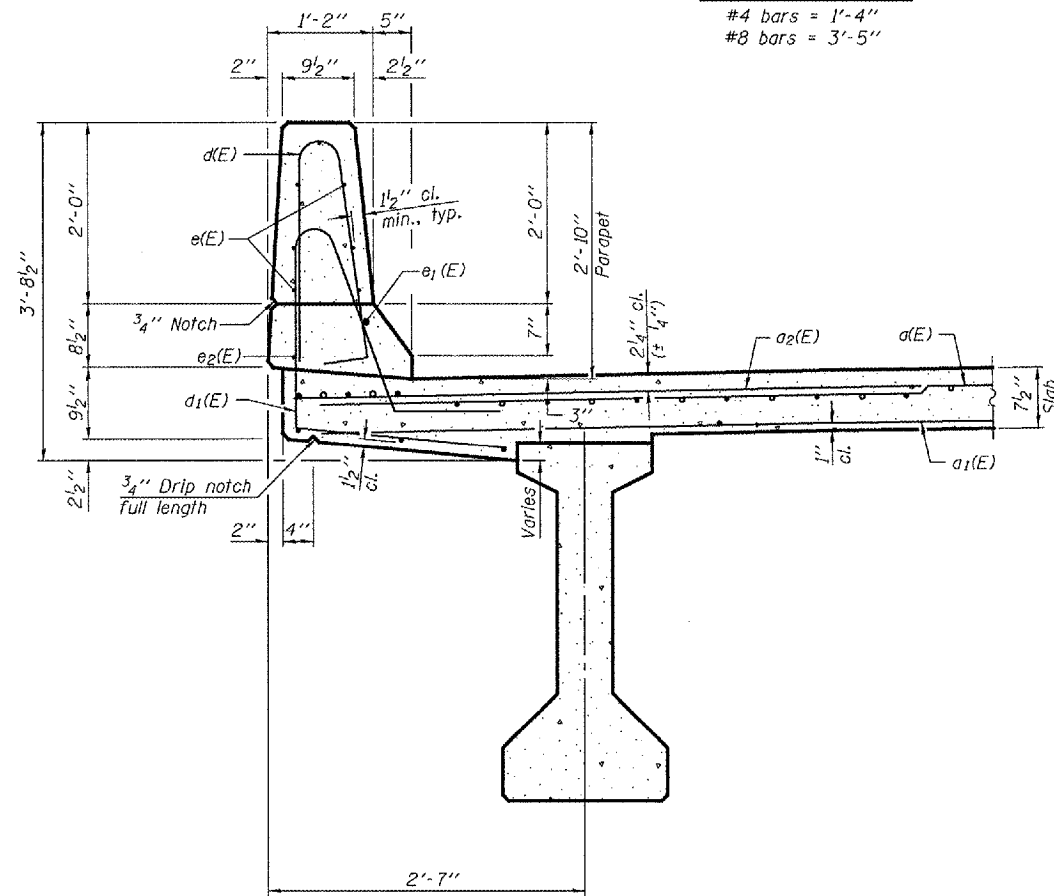
BAR d(E)



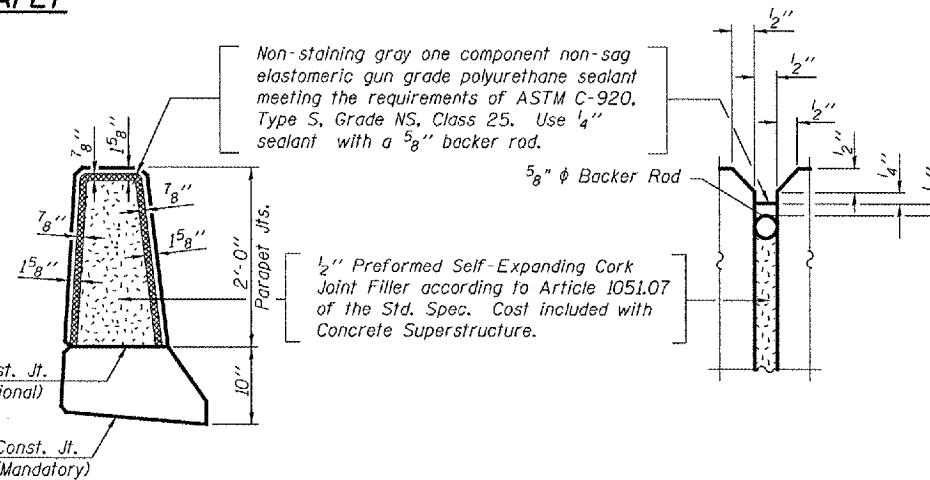
BAR d1(E)

MIN. BAR LAPS

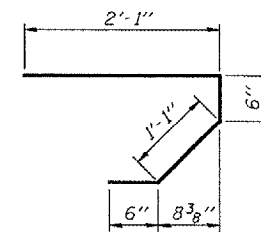
#4 bars = 1'-4"
#8 bars = 3'-5"



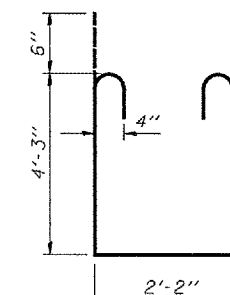
SECTION THRU PARAPET



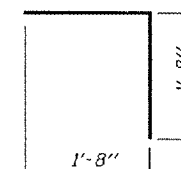
PARAPET JOINT DETAILS



BAR s(E)



BAR s1(E)



BAR v(E)

SUPERSTRUCTURE
BILL OF MATERIAL

Bar	No.	Size	Length	Shape
d(E)	236	#5	17'-2"	—
d1(E)	178	#5	16'-8"	—
a2(E)	118	#6	4'-6"	—
b(E)	114	#5	30'-6"	—
d1(E)	128	#5	23'-4"	—
d(E)	192	#5	5'-7"	U
d1(E)	192	#5	7'-1"	U
e(E)	70	#4	17'-4"	—
e1(E)	4	#8	45'-7"	—
e2(E)	4	#4	44'-7"	—
m(E)	12	#6	17'-3"	—
m1(E)	8	#6	16'-5"	—
m2(E)	24	#6	7'-7"	—
m3(E)	8	#6	3'-10"	—
m4(E)	4	#6	1'-4"	—
s(E)	64	#5	4'-2"	U
s1(E)	64	#4	11'-8"	U
v(E)	72	#5	3'-4"	—
Reinforcement Bars, Epoxy Coated		Lbs.	20670	
Concrete Superstructure		Cu. Yds.	120.1	

Bars indicated thus 1 x 2-#4 etc. indicates 1 line of bars with 2 lengths per line.

SUPERSTRUCTURE DETAILS
F.A.P. ROUTE 310 - SECTION (101BY)BR
WARREN COUNTY
STATION 73+02
STRUCTURE NO. 094-0049

DESIGNED	JSB
CHECKED	CME
DRAWN	P.W. SWEET
CHECKED	JSB/CME

September 6, 2007
EXAMINED *Thomas J. Donagale*
PASSED *Ralph E. Anderson*
ENGINEER OF BRIDGES AND STRUCTURES