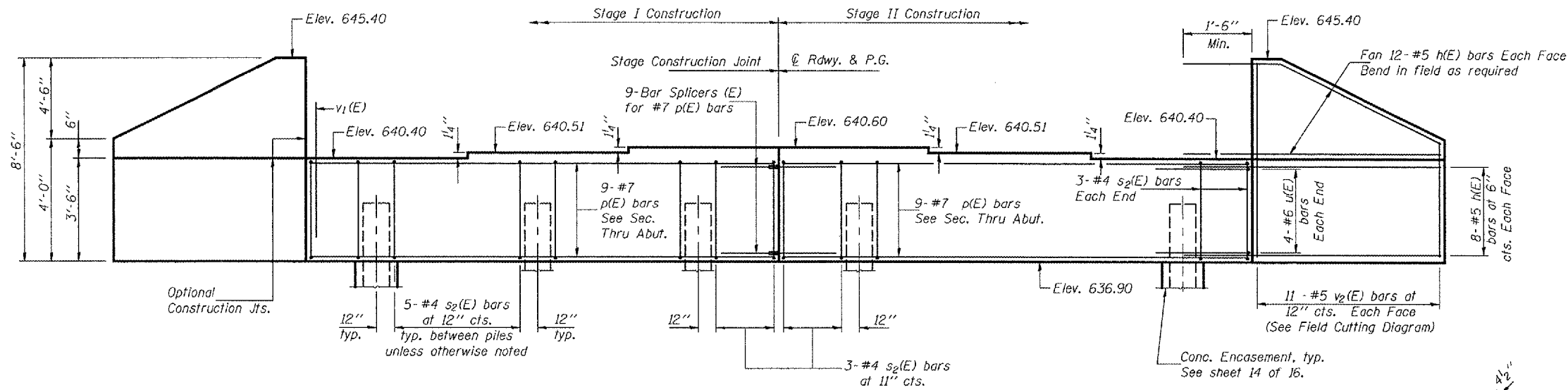


STATE OF ILLINOIS
DEPARTMENT OF TRANSPORTATION

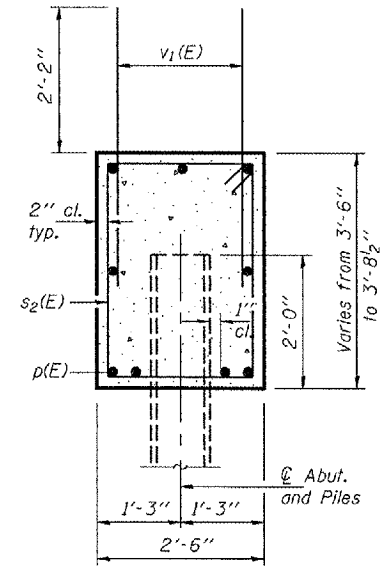
ROUTE NO. F.A.P. 310	SECTION (101BY) BR	COUNTY WARREN	SHEET 47	POST 46	SHEET NO. 12
ILLINOIS FEDERAL PROJECT					16 SHEETS

Contract #88798

Notes: Pour steps monolithically with cap.



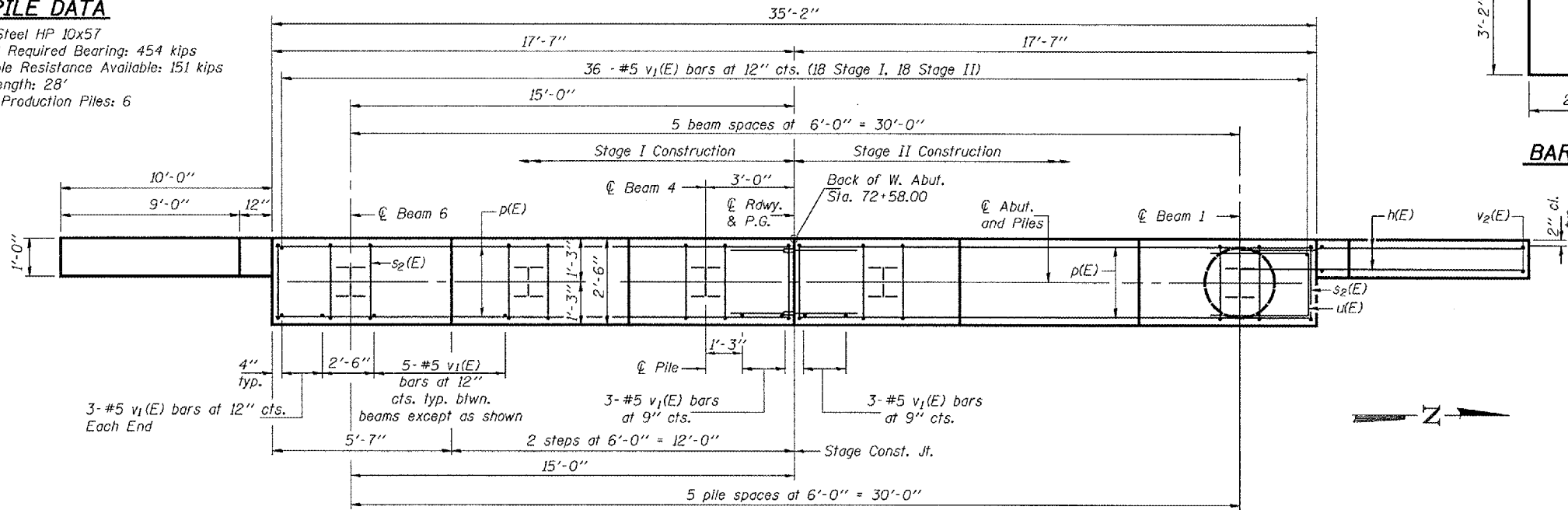
ELEVATION
(Looking West)



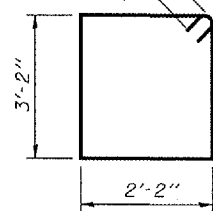
SEC. THRU ABUT.

PILE DATA

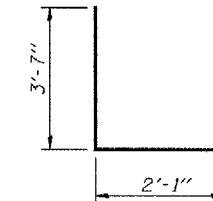
Type: Steel HP 10x57
Nominal Required Bearing: 454 kips
Allowable Resistance Available: 151 kips
Est. Length: 28'
No. of Production Piles: 6



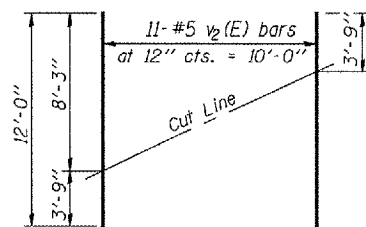
PLAN



BAR s2(E)



BAR u(E)



FIELD CUTTING DIAGRAM

Order v2(E) full length. Cut as shown and use remainder of bars in opposite face.

BILL OF MATERIAL

Bar	No.	Size	Length	Shape
h(E)	80	#5	11'-4"	—
p(E)	18	#7	17'-3"	—
s2(E)	32	#4	11'-5"	□
u(E)	8	#6	9'-3"	□
v1(E)	68	#6	4'-4"	—
v2(E)	22	#5	12'-0"	—
Concrete Structures		Cu. Yd.	16.7	
Reinforcement Bars, Epoxy Coated		Pound	2650	
Structure Excavation		Cu. Yd.	220.5	
Furnishing Steel		Ft.	168	
Piles HP 10x57		Ft.	168	
Driving Piles		Ft.	168	

DESIGNED	JSB
CHECKED	CME
DRAWN	BMC P.W. SWEET
CHECKED	JSB/CME

September 6, 2007
EXAMINED *Thomas J. Donagale*
MEMBER OF THE DESIGN
PASSED *Ralph E. Anderson*
ENGINEER OF BRIDGES AND STRUCTURES

WEST ABUTMENT
F.A.P. ROUTE 310 - SECTION (101BY)BR
WARREN COUNTY
STATION 73+02
STRUCTURE NO. 094-0049