

SEC 26, TWP4N, R2W, 4TH P.M.

F.A.P. RTE.	SECTION	COUNTY	TOTAL SHEETS	SHEET NO.
310	141-A18R	McDONOUGH	58	13
STA. 563+00.0		TO STA. 567+20.0		
FED. ROAD DIST. NO.		ILLINOIS		FED. AID PROJECT
CONTRACT NO. 88939				

GUARDRAIL SCHEDULES NORTH OF PR. BRIDGE:

TRAFFIC BARRIER TERMINAL TYPE 1, SPECIAL (FLARED)  
50' - STA. 565+35.35 TO STA. 565+85.35, LEFT  
50' - STA. 564+47.85 TO STA. 564+97.85, RIGHT

STEEL PLATE BEAM GUARD RAIL, TYPE A  
87.5' - 7 SECTIONS, STA. 565+85.35 TO STA. 566+72.85, LEFT  
175' - 14 SECTIONS, STA. 564+97.85 TO STA. 566+72.85, RIGHT

TRAFFIC BARRIER TERMINAL, TYPE 6  
STA. 566+72.85 TO BRIDGE PARAPET, BOTH LEFT & RIGHT

EROSION CONTROL CURB SCHEDULES:

STA. 565+85.35 TO STA. 567+03.50, LEFT  
STA. 564+97.85 TO STA. 567+03.50, RIGHT

STA. 567+79.50 TO STA. 569+85.15, LEFT  
STA. 567+79.50 TO STA. 568+97.65, RIGHT

NOTES:  
1. BENCH MARK:

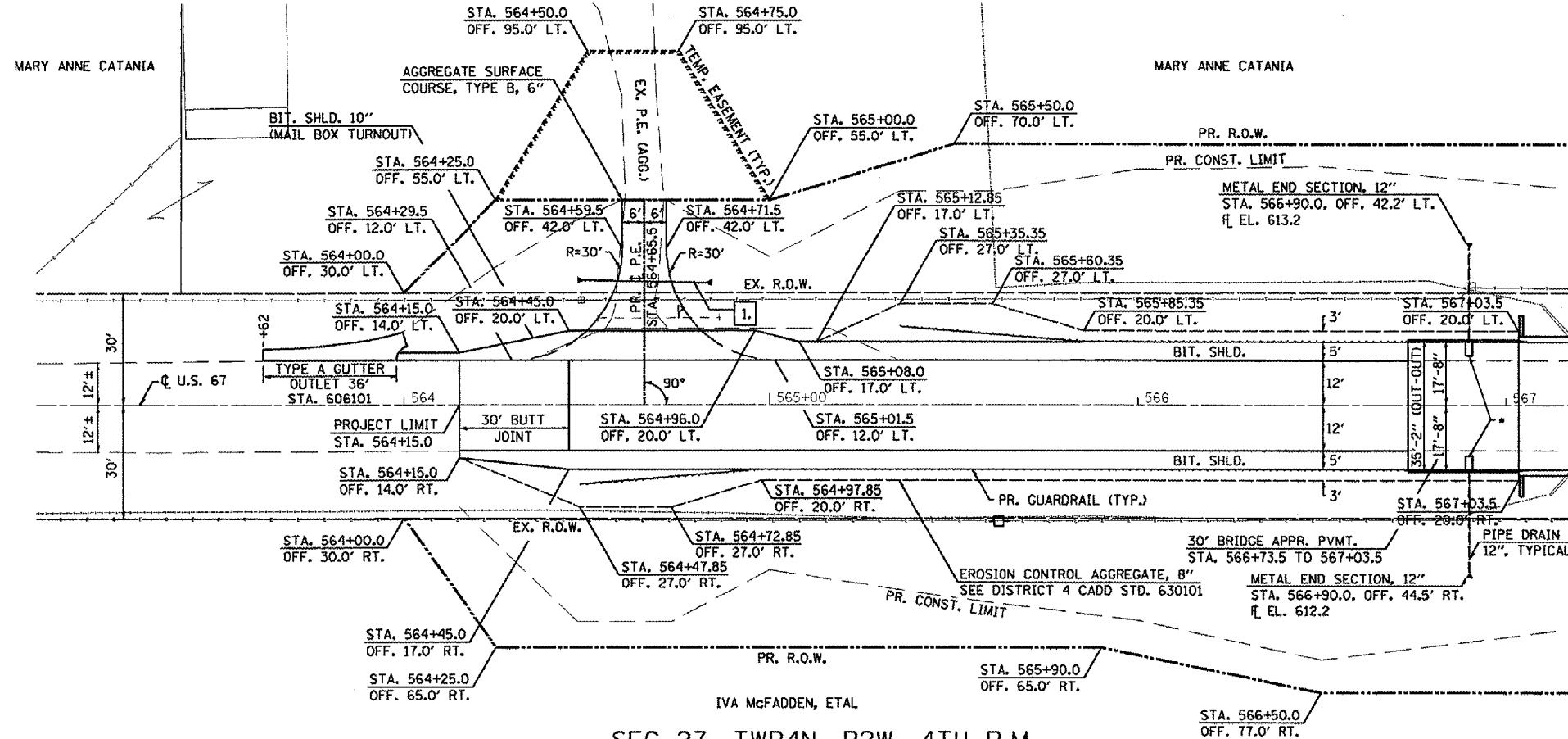
A CHISELED SQUARE ON THE SOUTHWEST WINGWALL OF EXISTING S.N. 055-0007, ELEVATION 620.90.

2. TRANSITION FORESLOPE FROM 3:1 TO 2:1 FROM STA. 566+73.5 TO STA. 566+93.5. SEE CROSS SECTION SHEETS FOR MORE DETAILS.

3. SEE EROSION CONTROL SHEET, TYPICAL & CROSS SECTION SHEETS AND STRUCTURE GENERAL PLAN AND ELEVATION SHEET FOR DETAILS OF STONE RIPRAP NOT SHOWN.

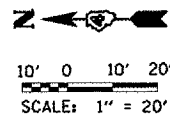
MARY ANNE CATANIA

MARY ANNE CATANIA

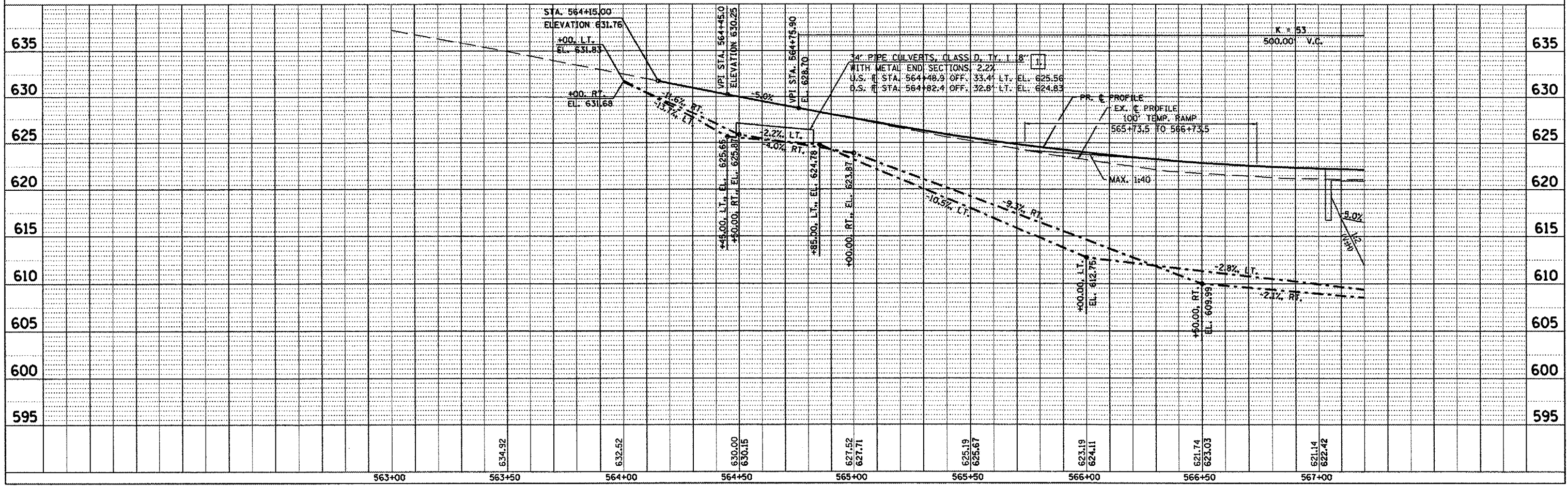


MATCH LINE STA. 567+20.00

\*TYPE C INLET BOX STD. 609006, TYP. STA. 566+90.0



SEC 27, TWP4N, R2W, 4TH P.M.



PLAN	DATE
SURVEYED	
PLOTTED	
CHECKED	
BY	
DATE	

PROFILE	DATE
SURVEYED	
PLOTTED	
CHECKED	
BY	
DATE	