








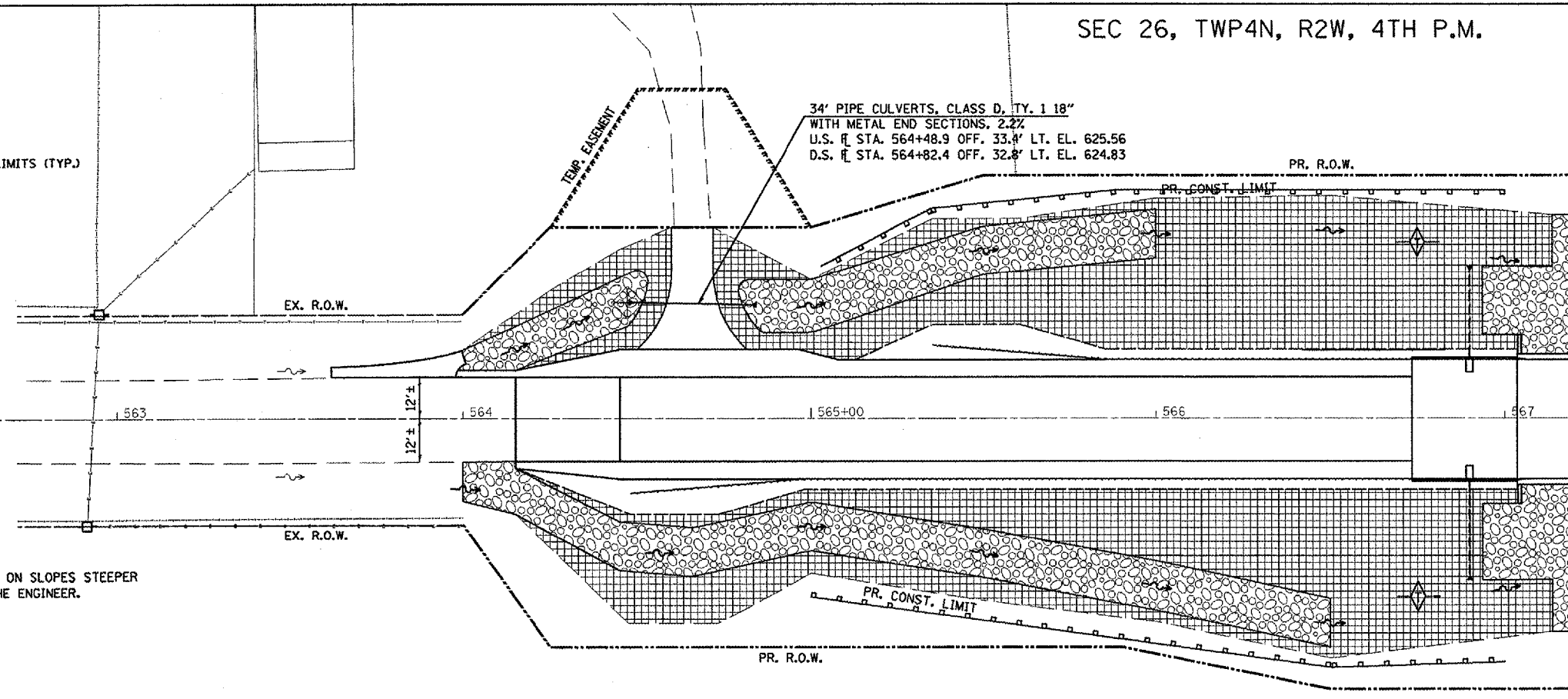
F.A.P. RTE.	SECTION	COUNTY	TOTAL SHEETS	SHEET NO.
310	(41-A)BR	MCDONOUGH	58	17
STA.	TO STA.			
FED. ROAD DIST. NO.	ILLINOIS FED. AID PROJECT			

SEC 26, TWP4N, R2W, 4TH P.M.

EROSION CONTROL LEGEND

-  INLET & PIPE PROTECTION
-  TEMPORARY DITCH CHECK
-  PROP. SEEDING, CLASS 3 & MULCH METHOD 2 WITHIN CONSTRUCTION LIMITS (TYP.)
-  STONE RIPRAP WITH FILTER FABRIC
-  EXISTING DITCH FLOW
-  PROPOSED DITCH FLOW
-  PERIMETER EROSION BARRIER

POT. STA. 561+70.00



NOTE:
EROSION CONTROL BLANKET SHALL BE INSTALLED ON SLOPES STEEPER THAN 1:3 AND AT LOCATIONS AS DIRECTED BY THE ENGINEER.

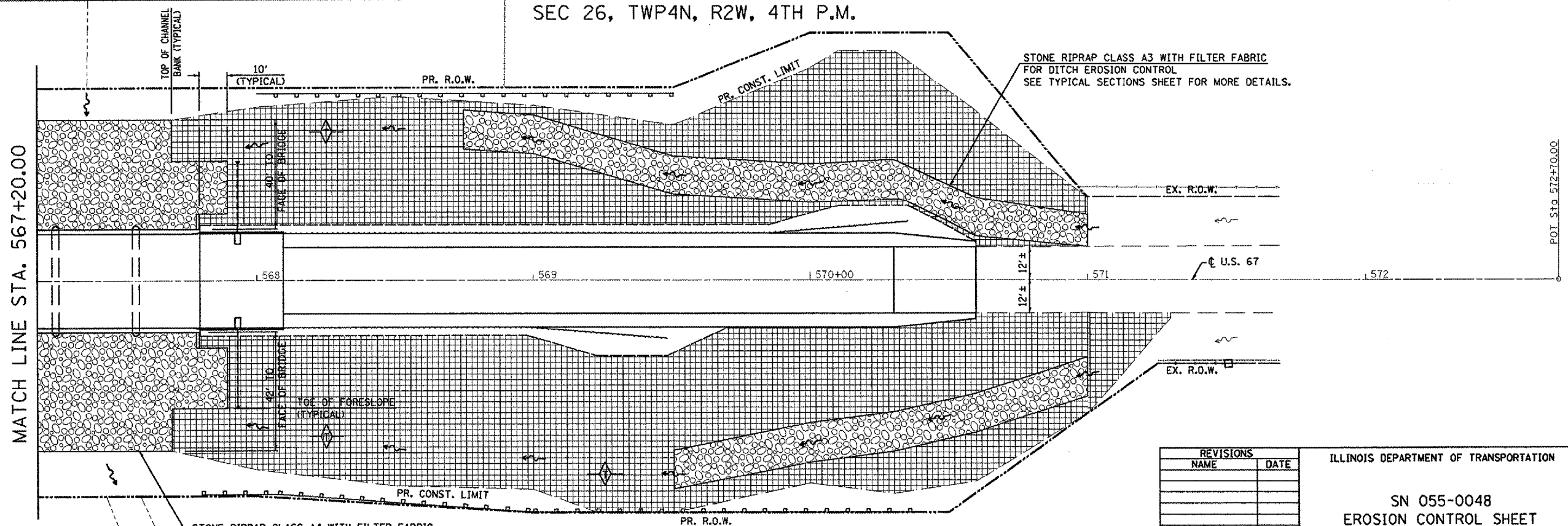


10' 0" 10' 20"
SCALE: 1" = 20'

MATCH LINE STA. 567+20.00

SEC 27, TWP4N, R2W, 4TH P.M.

SEC 26, TWP4N, R2W, 4TH P.M.



POT. STA. 572+70.00



10' 0" 10' 20"
SCALE: 1" = 20'

REVISIONS	
NAME	DATE

ILLINOIS DEPARTMENT OF TRANSPORTATION

SN 055-0048
EROSION CONTROL SHEET

SCALE: VERT. HORIZ.
DATE

DRAWN BY
CHECKED BY

PLOT DATE = 8/9/2006
FILE NAME = c:\arcgis\gis\88939\sheet\erocn.dgn
USER NAME = neelsharma