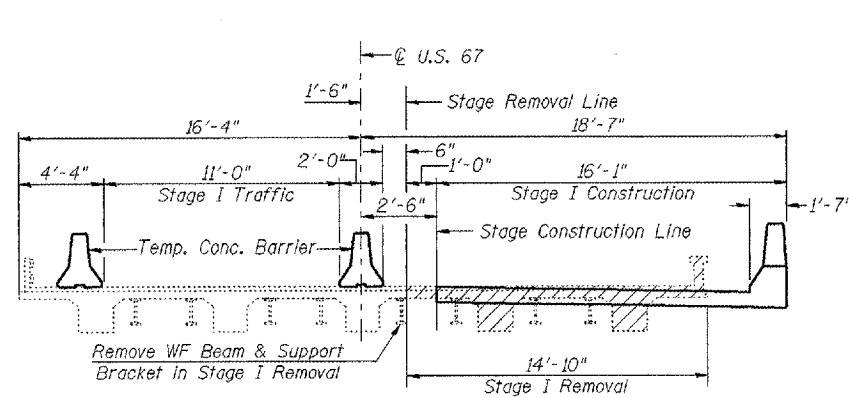
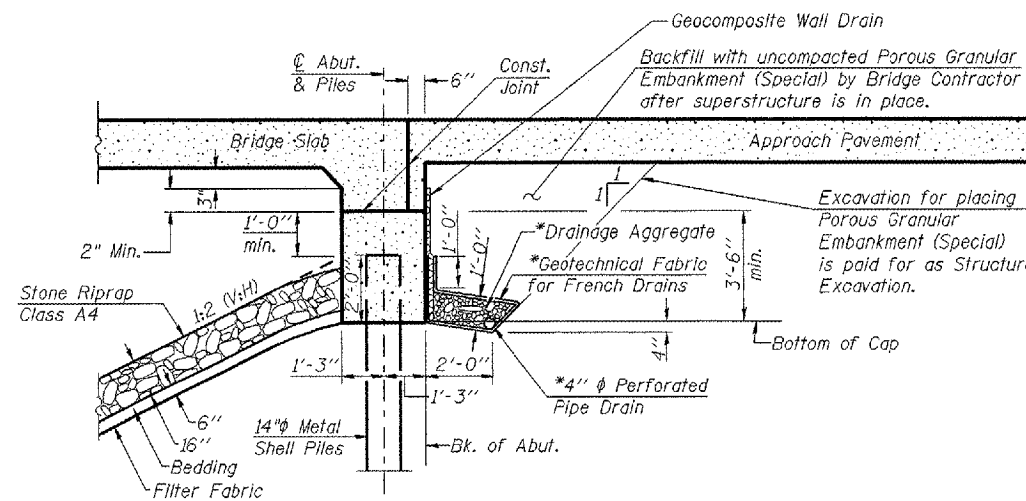


TOTAL BILL OF MATERIAL

ITEM	UNIT	SUPER	SUB	TOTAL
Removal of Existing Structures	Each	1		1
Structure Excavation	Cu. Yd.		124	124
Underwater Structure Excavation Protection - Location 1	Each		1	1
Underwater Structure Excavation Protection - Location 2	Each		1	1
Temporary Sheet Piling	Sq. Ft.		1334	1334
Porous Granular Embankment (Special)	Cu. Yd.		45	45
Pipe Underdrains for Structures 4"	Foot		97	97
Geocomposite Wall Drain	Sq. Yd.		31	31
Concrete Structures	Cu. Yd.		103.9	103.9
Concrete Superstructure	Cu. Yd.	156.2		156.2
Bridge Deck Grooving	Sq. Yd.	270		270
Reinforcement Bars, Epoxy Coated	Pound	26,310	10,730	37,040
Bar Splicers	Each	118	78	196
Protective Coat	Sq. Yd.	351	3	354
Floor Drains	Each	6		6
Furnishing Metal Pile Shells 14"	Foot		1821	1821
Driving and Filling Shells	Foot		1821	1821
Test Pile Metal Shells	Each		2	2
Name Plates	Each	1		1
Stone Riprap Class A4	Sq. Yd.		1015	1015
Filter Fabric	Sq. Yd.		1015	1015
Permanent Survey Marker T1	Each		1	1



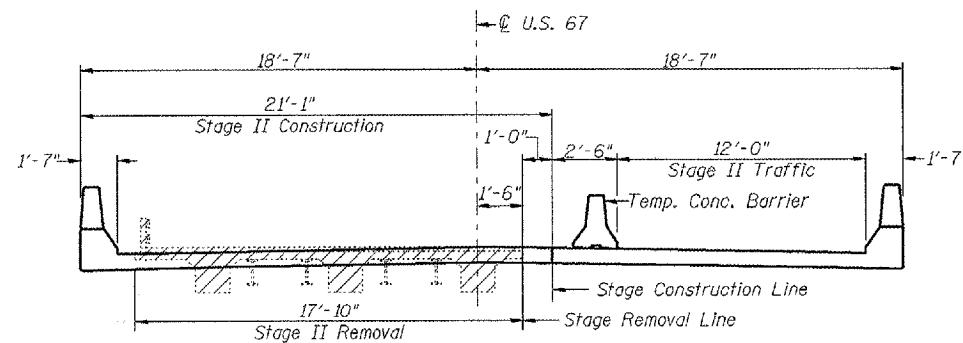
STAGE I REMOVAL & CONSTRUCTION
(Looking South)



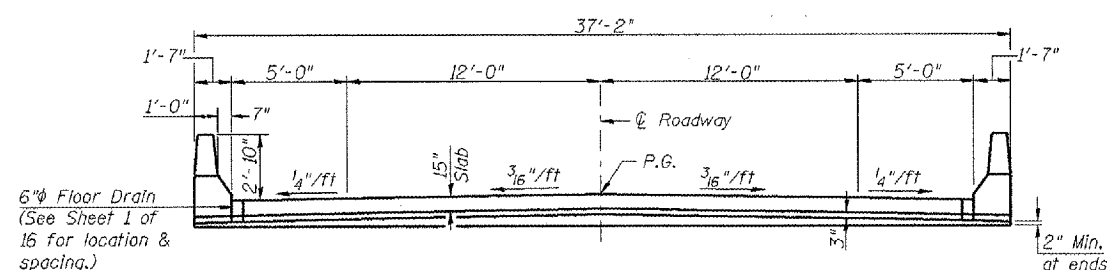
SECTION THRU INTEGRAL ABUTMENT

* Included in the cost of Pipe Underdrains for Structures.

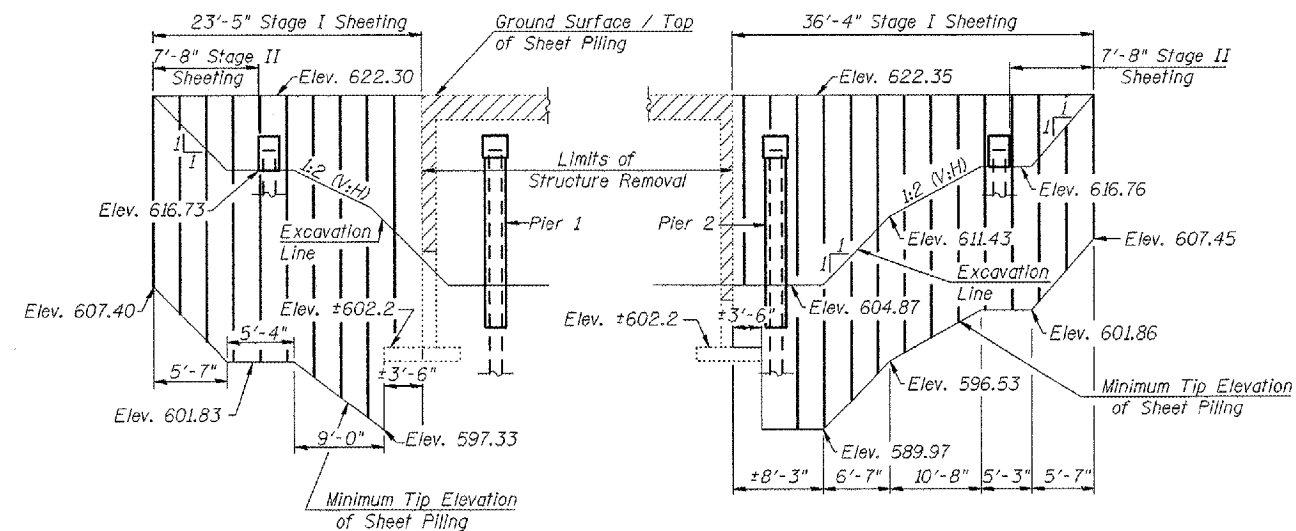
Note:
All drainage system components shall extend to 2'-0" from the end of each wingwall except an outlet pipe shall extend until intersecting with the side slopes. The pipes shall drain into concrete headwalls. (See Article 601.05 of the Standard Specifications and Highway Standard 601101).



STAGE II REMOVAL & CONSTRUCTION
(Looking South)



PROPOSED CROSS SECTION



NORTH ABUTMENT

SOUTH ABUTMENT

TEMPORARY SHEET PILING

If the contractor chooses to alter the temporary cantilevered sheet piling design requirements shown on the plans, a design submittal including plan details and calculations will be required for review and acceptance by the Engineer. Minimum Section modulus of temporary sheet piling shall be 49 in³/ft. The Contractor shall connect the first sheet to the existing abutment wall to ensure stability of sheets driven to the top of the existing footing. This connection shall be reviewed and accepted by the Engineer and included in the cost for Temporary Sheet Piling.

LIN ENGINEERING, LTD.
201 W. Cass Street
Chicago, Illinois 60604
Tel: (312) 487-4600 Fax: (312) 487-4106
Designed By: DLS Checked By: MTH Drawn By: ADB
Date: 01/06 File: 0280148.DGN

REVISIONS	
NAME	DATE

ILLINOIS DEPARTMENT OF TRANSPORTATION
STAGE CONSTRUCTION DETAILS
F.A.P. ROUTE 310 (US 67)
OVER CARTER CREEK
SECTION (41A)BR
MCDONOUGH COUNTY
STA. 567+41.50
S.N. 055-0048