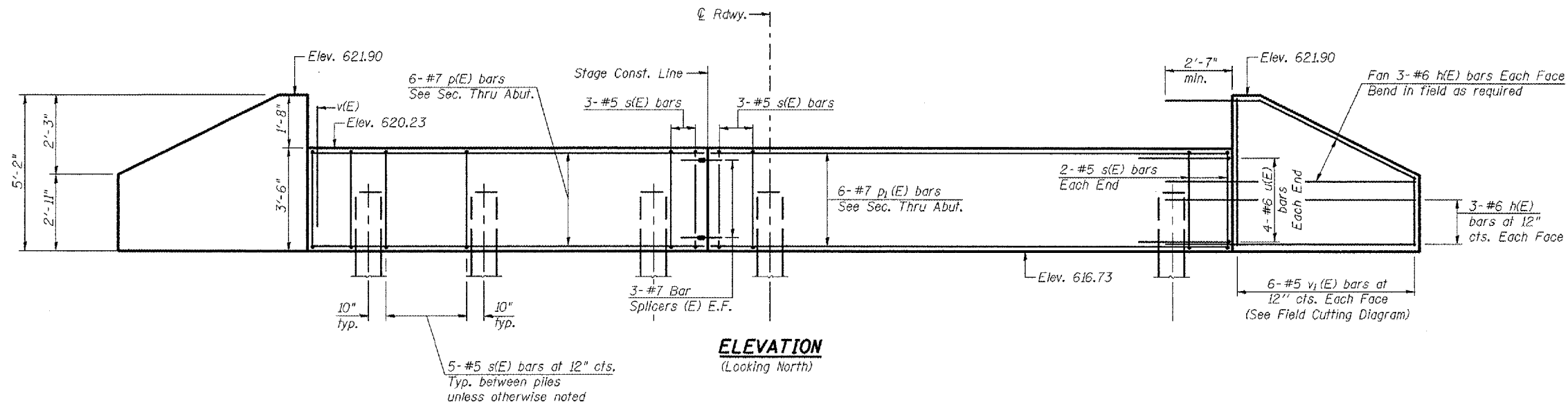


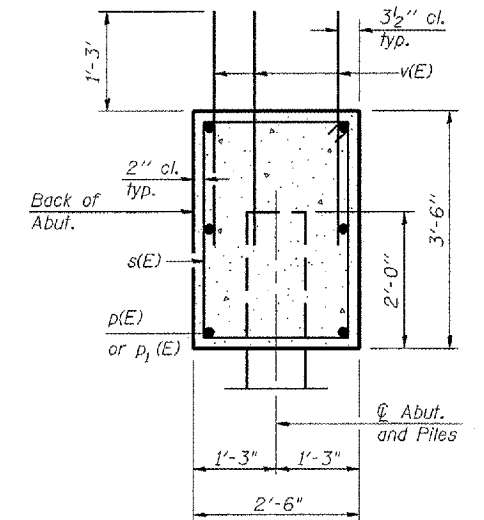
ROUTE NO.	SECTION	COUNTY	TOTAL SHEETS	SHEET NO.
F.A.P. 310 U.S. 67	(41A)BR	McDonough	58	23
FED. ROAD DIST. NO. 4		FED. AID PROJECT		

SHEET NO. 6
16 SHEETS

Contract #88939



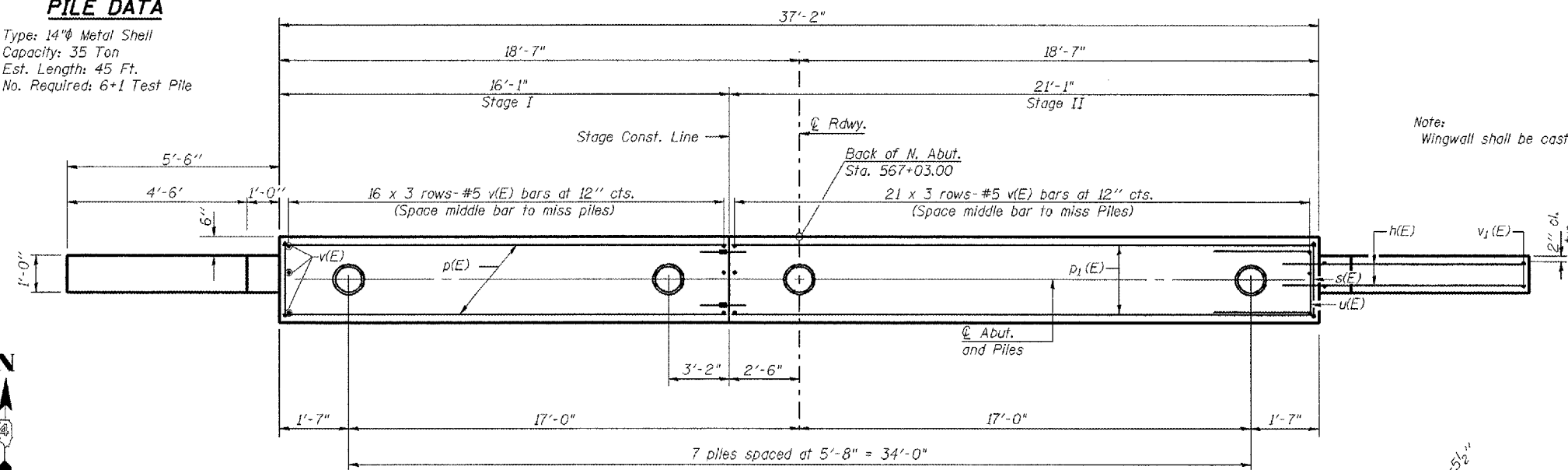
ELEVATION
(Looking North)



SEC. THRU ABUT.

PILE DATA

Type: 14" Metal Shell
Capacity: 35 Ton
Est. Length: 45 Ft.
No. Required: 6+1 Test Pile



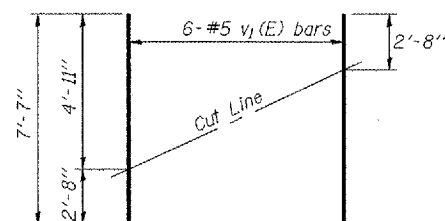
PLAN

Note:
Wingwall shall be cast monolithically with cap

BILL OF MATERIAL

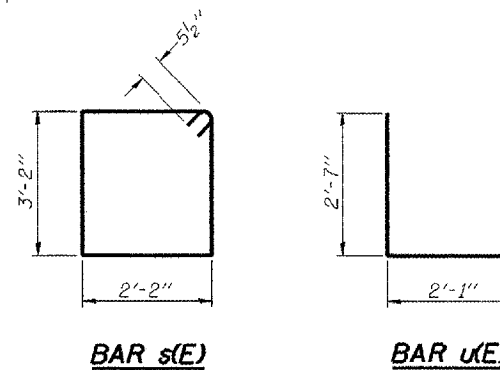
Bar	No.	Size	Length	Shape
h(E)	24	#6	8'-6"	—
p(E)	6	#7	15'-10"	—
p1(E)	6	#7	20'-10"	—
s(E)	35	#5	11'-7"	□
u(E)	8	#6	7'-3"	—
v(E)	111	#5	3'-5"	—
v1(E)	12	#5	7'-7"	—
Concrete Structures		Cu. Yd.	13.1	
Reinforcement Bars, Epoxy Coated		Pound	1760	
Structure Excavation		Cu. Yd.	27.0	
Furnishing Metal Pile Shells 14"		Foot	270	
Driving and Filling Shells		Foot	270	
Test Pile Metal Shells		Each	1	

Reinforcement bars designated (E) shall be epoxy coated.
For details of Bar Splicers, see sheet 10 of 16.



FIELD CUTTING DIAGRAM

Order v1(E) full length. Cut as shown and use remainder of bars in opposite face.



BAR s(E)

BAR u(E)

LIN ENGINEERING, LTD.
300 W. CHASTAIN
CHATTANOOGA, TENN. 37402
DESIGNED BY: DLS
DATE: 01/06

REVISIONS	
NAME	DATE

ILLINOIS DEPARTMENT OF TRANSPORTATION
NORTH ABUTMENT
F.A.P. ROUTE 310 (US 67)
OVER CARTER CREEK
SECTION (41A)BR
MCDONOUGH COUNTY
STA. 567+41.50
S.N. 055-0048