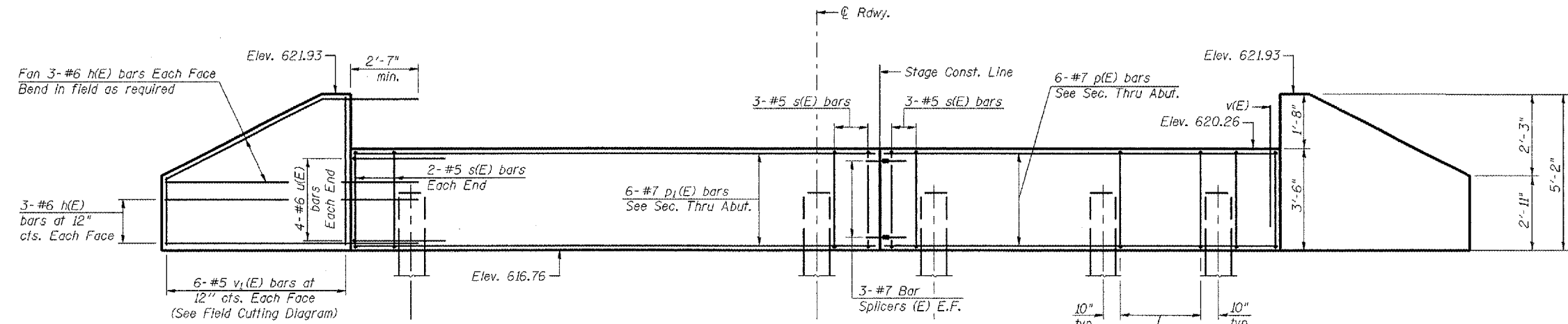
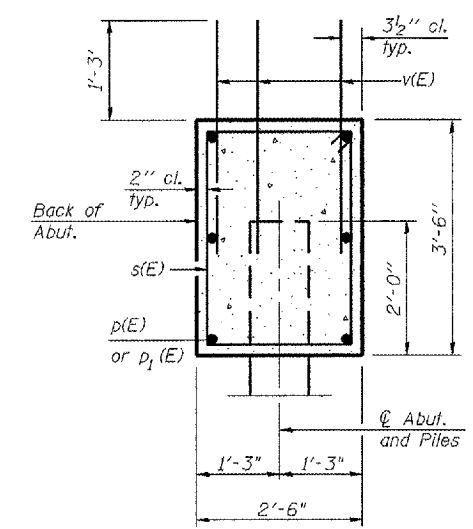


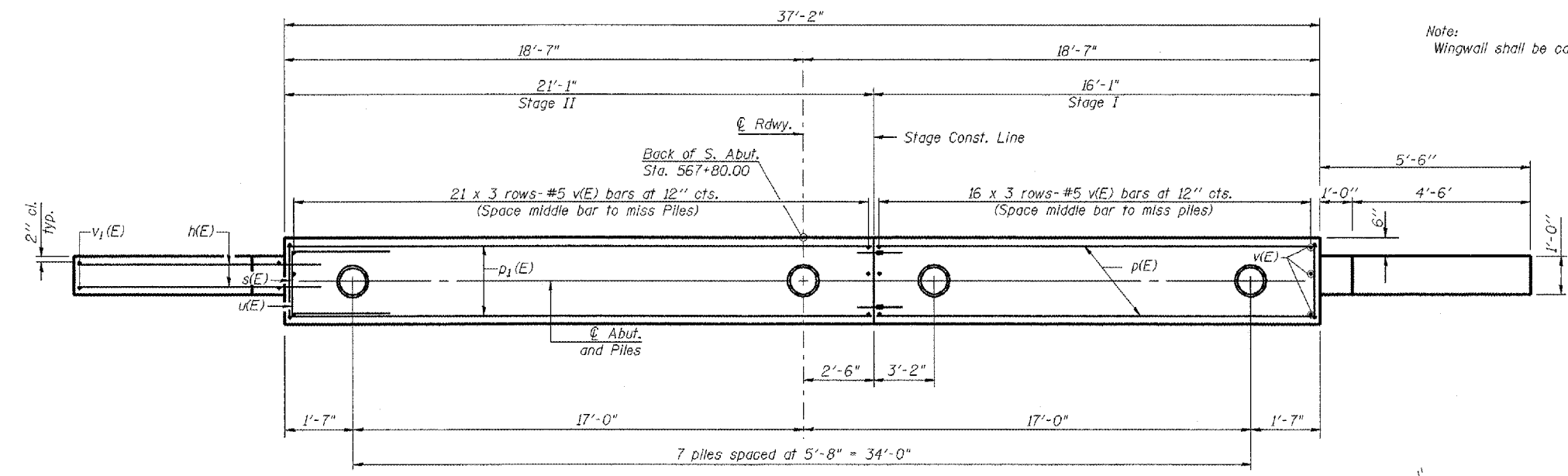
Contract #88939



ELEVATION
(Looking South)



SEC. THRU ABUT.



PLAN

Note:
Wingwall shall be cast monolithically with cap

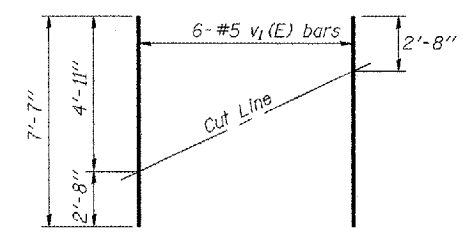
BILL OF MATERIAL

Bar	No.	Size	Length	Shape
h(E)	24	#6	8'-6"	—
p(E)	6	#7	15'-10"	—
p1(E)	6	#7	20'-10"	—
s(E)	35	#5	11'-7"	□
u(E)	8	#6	7'-3"	—
v(E)	111	#5	3'-5"	—
v1(E)	12	#5	7'-7"	—
Concrete Structures		Cu. Yd.	13.1	
Reinforcement Bars, Epoxy Coated		Pound	1760	
Structure Excavation		Cu. Yd.	27.1	
Furnishing Metal Pile Shells 14"		Foot	315	
Driving and Filling Shells		Foot	315	

Reinforcement bars designated (E) shall be epoxy coated. For details of Bar Splicers, see sheet 10 of 16.

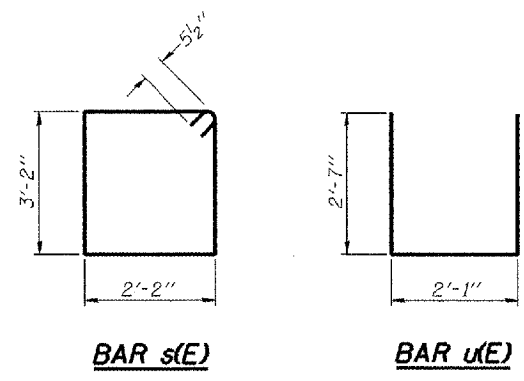
PILE DATA

Type: 14"φ Metal Shell
Capacity: 35 Ton
Est. Length: 45 Ft.
No. Required: 7



FIELD CUTTING DIAGRAM

Order v1(E) full length. Cut as shown and use remainder of bars in opposite face.



BAR s(E)

BAR u(E)

LIJ ENGINEERING, LTD.
200 W. Chestnut
Chicago, Illinois 60609
Tel: (312) 461-4600
Fax: (312) 461-4700
Designed By: DLS
Checked By: JTH
Date: 01/06
Drawn By: ADH
File: 055048.DWG

REVISIONS	
NAME	DATE

ILLINOIS DEPARTMENT OF TRANSPORTATION
SOUTH ABUTMENT
F.A.P. ROUTE 310 (US 67)
OVER CARTER CREEK
SECTION (41A)BR
MCDONOUGH COUNTY
STA. 567+41.50
S.N. 055-0048