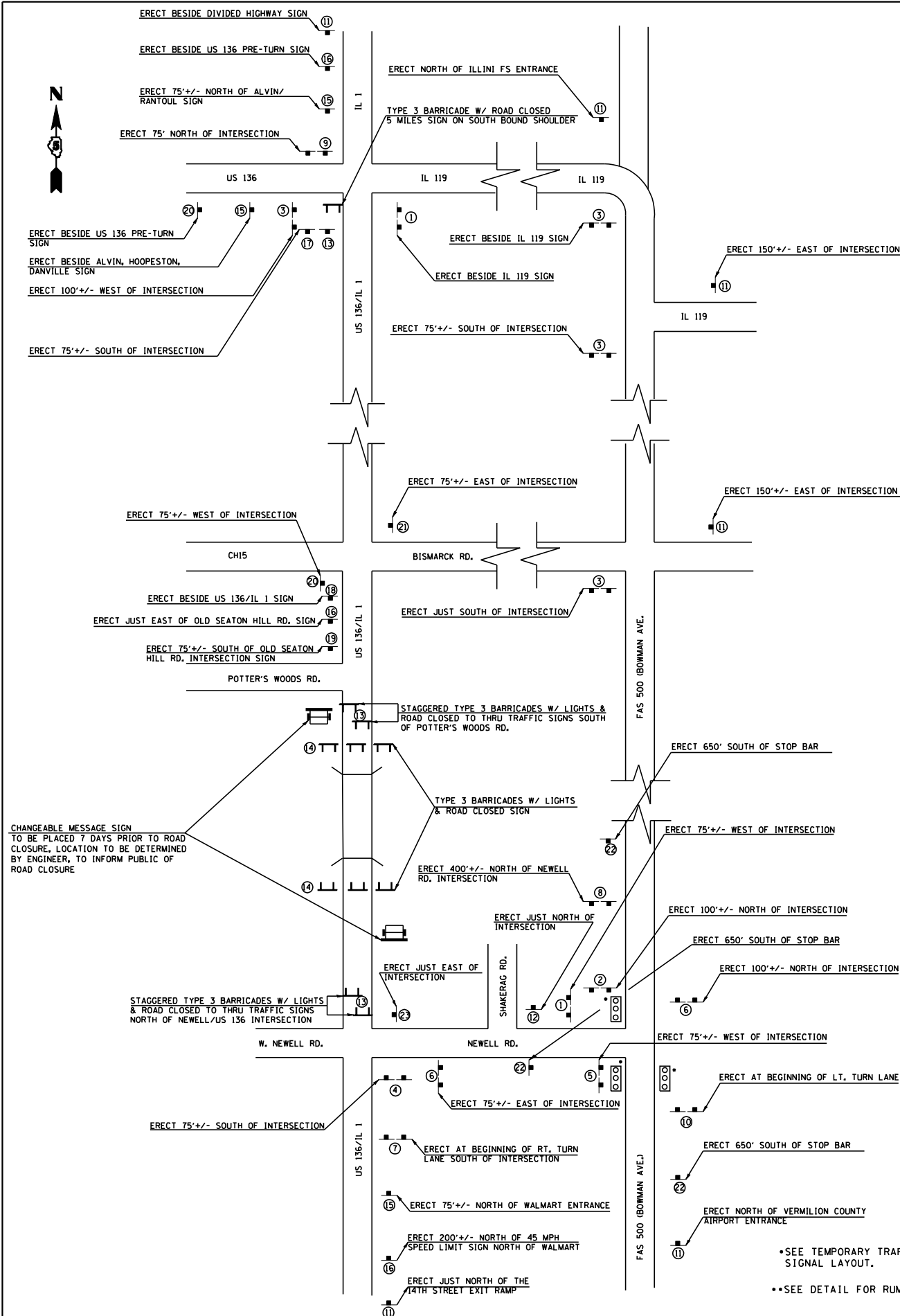
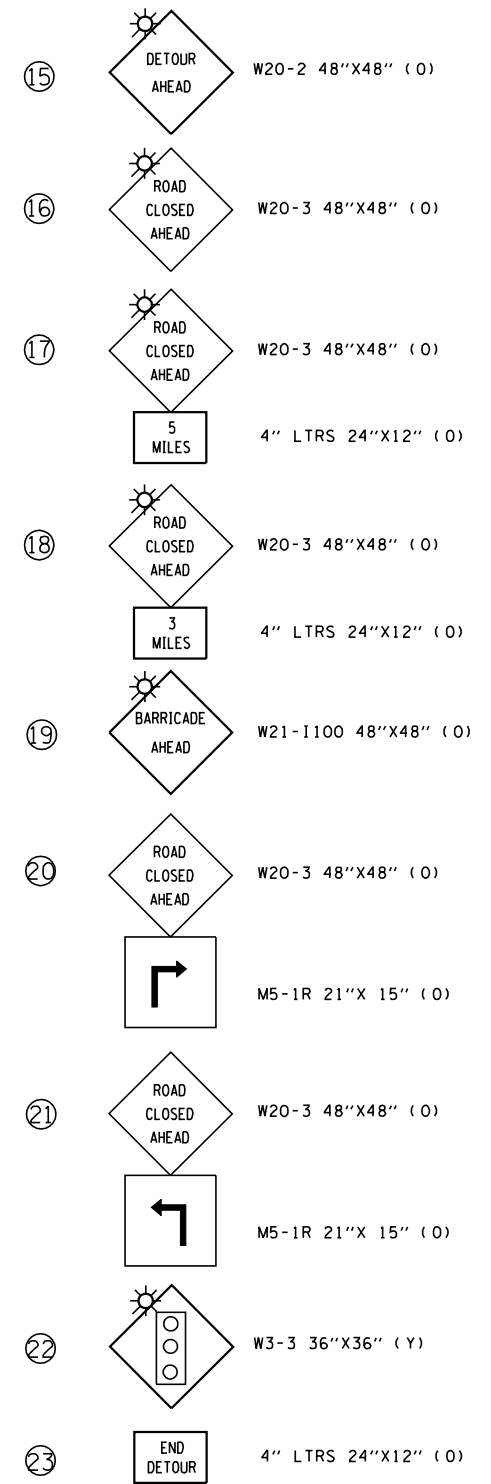


TRAFFIC CONTROL PLAN

FOR MARKED ROUTE
ROAD CLOSED DETOUR



①	M4-8 24"X 12" (O) M3-3 24"X 12" (W) M1-1100 24"X 24" (W)	DETOUR SOUTH ILL 1	DETOUR EAST U.S. 136	M4-8 24"X 12" (O) M3-3 24"X 12" (W) M1-4 30"X 24" (W)
②	M4-8 24"X 12" (O) M3-3 24"X 12" (W) M6-1 21"X 15" (W)	DETOUR SOUTH ILL 1	DETOUR EAST U.S. 136	M4-8 24"X 12" (O) M3-3 24"X 12" (W) M1-4 30"X 24" (W) M6-1 21"X 15" (W)
③	M4-8 24"X 12" (O) M3-3 24"X 12" (W) M1-1100 24"X 24" (W) M6-3 21"X 15" (W)	DETOUR SOUTH ILL 1	DETOUR EAST U.S. 136	M4-8 24"X 12" (O) M3-3 24"X 12" (W) M1-4 30"X 24" (W) M6-3 21"X 15" (W)
④	M4-8 24"X 12" (O) M3-4 24"X 12" (W) M1-1100 24"X 24" (W) M6-1 21"X 15" (W)	DETOUR NORTH ILL 1	DETOUR WEST U.S. 136	M4-8 24"X 12" (O) M3-1 24"X 12" (W) M1-4 30"X 24" (W) M6-1 21"X 15" (W)
⑤	M4-8 24"X 12" (O) M3-4 24"X 12" (W) M1-1100 24"X 24" (W) M6-2 21"X 15" (W)	DETOUR NORTH ILL 1	DETOUR WEST U.S. 136	M4-8 24"X 12" (O) M3-1 24"X 12" (W) M1-4 30"X 24" (W) M6-2 21"X 15" (W)
⑥	M4-8 24"X 12" (O) M3-4 24"X 12" (W) M1-1100 24"X 24" (W)	DETOUR NORTH ILL 1	DETOUR WEST U.S. 136	M4-8 24"X 12" (O) M3-1 24"X 12" (W) M1-4 30"X 24" (W)
⑦	M4-8 24"X 12" (O) M3-1 24"X 12" (W) M1-1100 24"X 24" (W) M5-1R 21"X 15" (W)	DETOUR NORTH ILL 1	DETOUR WEST U.S. 136	M4-8 24"X 12" (O) M3-1 24"X 12" (W) M1-4 30"X 24" (W) M5-1R 21"X 15" (W)
⑧	M4-8 24"X 12" (O) M3-3 24"X 12" (W) M1-1100 24"X 24" (W) M5-1R 21"X 15" (W)	DETOUR SOUTH ILL 1	DETOUR EAST U.S. 136	M4-8 24"X 12" (O) M3-2 24"X 12" (W) M1-4 30"X 24" (W) M5-1R 21"X 15" (W)
⑨	M4-8 24"X 12" (O) M3-3 24"X 12" (W) M1-1100 24"X 24" (W) M6-2 21"X 15" (W)	DETOUR SOUTH ILL 1	DETOUR EAST U.S. 136	M4-8 24"X 12" (O) M3-2 24"X 12" (W) M1-4 30"X 24" (W) M6-2 21"X 15" (W)
⑩	M4-8 24"X 12" (O) M3-1 24"X 12" (W) M1-1100 24"X 24" (W) M6-3 21"X 15" (W)	DETOUR NORTH ILL 1	DETOUR WEST U.S. 136	M4-8 24"X 12" (O) M3-4 24"X 12" (W) M1-4 30"X 24" (W) M6-3 21"X 15" (W)
⑪		IL 1 / U.S. 136 CLOSED, NORTH OF DANVILLE	CUSTOM SIGN 4" LTRS 60"X48" (O)	
⑫		NO THRU TRUCKS	N-6 24"X30" (W)	
⑬		ROAD CLOSED TO THRU TRAFFIC	R11-4 60"X30" (W)	
⑭		ROAD CLOSED	R11-2 60"X30" (W)	



NOTE: THE CONTRACTOR SHALL BE RESPONSIBLE FOR ALL SIGNS REQUIRED FOR THIS DETOUR EXCEPT AS NOTED BELOW. SEE DETOUR SIGNING SPECIAL PROVISION.

THE STATE SHALL PROVIDE ROUTE MARKER SHIELDS AND SIGNAL AHEAD SIGNS ONLY.

CHANGEABLE MESSAGE SIGN WILL BE PAID PER CAL DAY.

•SEE TEMPORARY TRAFFIC SIGNAL SHEET FOR SIGNAL LAYOUT.
••SEE DETAIL FOR RUMBLE STRIP LAYOUT