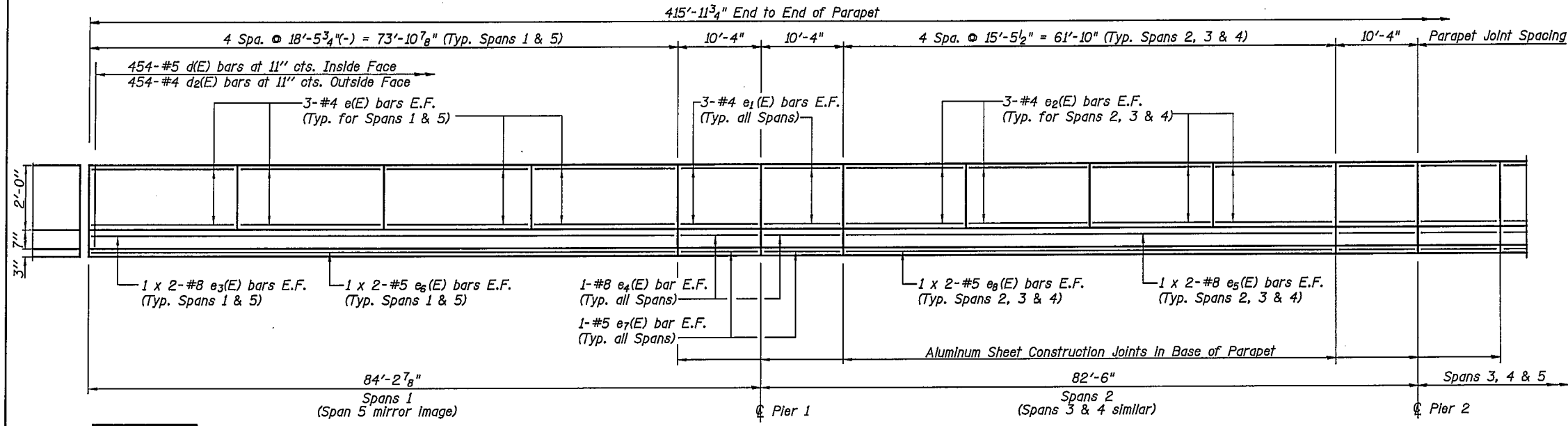


ROUTE NO.	SECTION	QUANTITY	SCALE	SHEET	SHEET NO.
F.A.P. 332	(*)	VERMILION	1/40	50	- SHEETS
Contract #90841					

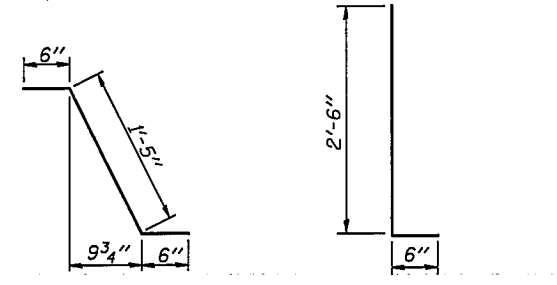


#5	1'-8"
#8	3'-5"

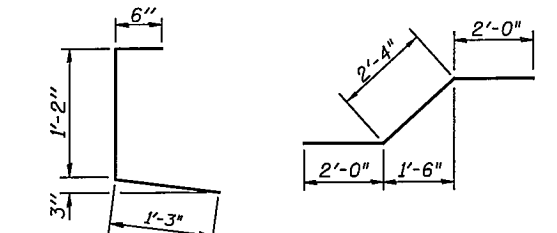
INSIDE ELEVATION OF PARAPET

SUPERSTRUCTURE BILL OF MATERIAL

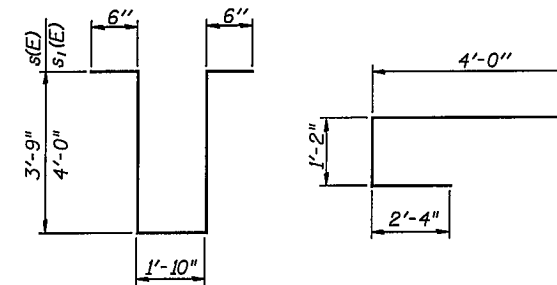
Bar No.	Size	Length	Shape
d(E)	459	#5	42'-6"
a ₁ (E)	459	#5	41'-10"
a ₂ (E)	496	#6	4'-6"
a ₃ (E)	24	#7	29'-2"
a ₄ (E)	56	#6	6'-3"
a ₅ (E)	4	#6	28'-5"
a ₆ (E)	40	#5	42'-1"
a ₇ (E)	40	#5	41'-5"
a ₈ (E)	16	#5	2'-0"
b(E)	690	#5	29'-9"
b ₁ (E)	328	#6	46'-0"
b ₂ (E)	442	#5	34'-0"
d ₁ (E)	908	#5	3'-0"
d ₂ (E)	908	#4	2'-5"
d ₃ (E)	908	#4	2'-11"
e(E)	96	#4	18'-1"
e ₁ (E)	96	#4	10'-0"
e ₂ (E)	144	#4	15'-1"
e ₃ (E)	16	#8	38'-6"
e ₄ (E)	32	#8	10'-0"
e ₅ (E)	24	#8	32'-6"
e ₆ (E)	16	#5	37'-8"
e ₇ (E)	32	#5	10'-0"
e ₈ (E)	24	#5	31'-7"
m(E)	112	#4	6'-2"
m ₁ (E)	56	#6	4'-6"
m ₂ (E)	32	#8	6'-4"
s(E)	56	#4	10'-4"
s ₁ (E)	56	#4	10'-10"
x(E)	140	#6	7'-6"
Reinforcement Bars, Epoxy Coated	Lbs.	131,170	
Concrete Superstructure	Cu. Yds.	609.8	



BAR d₁(E) BARS d(E) & d₂(E)

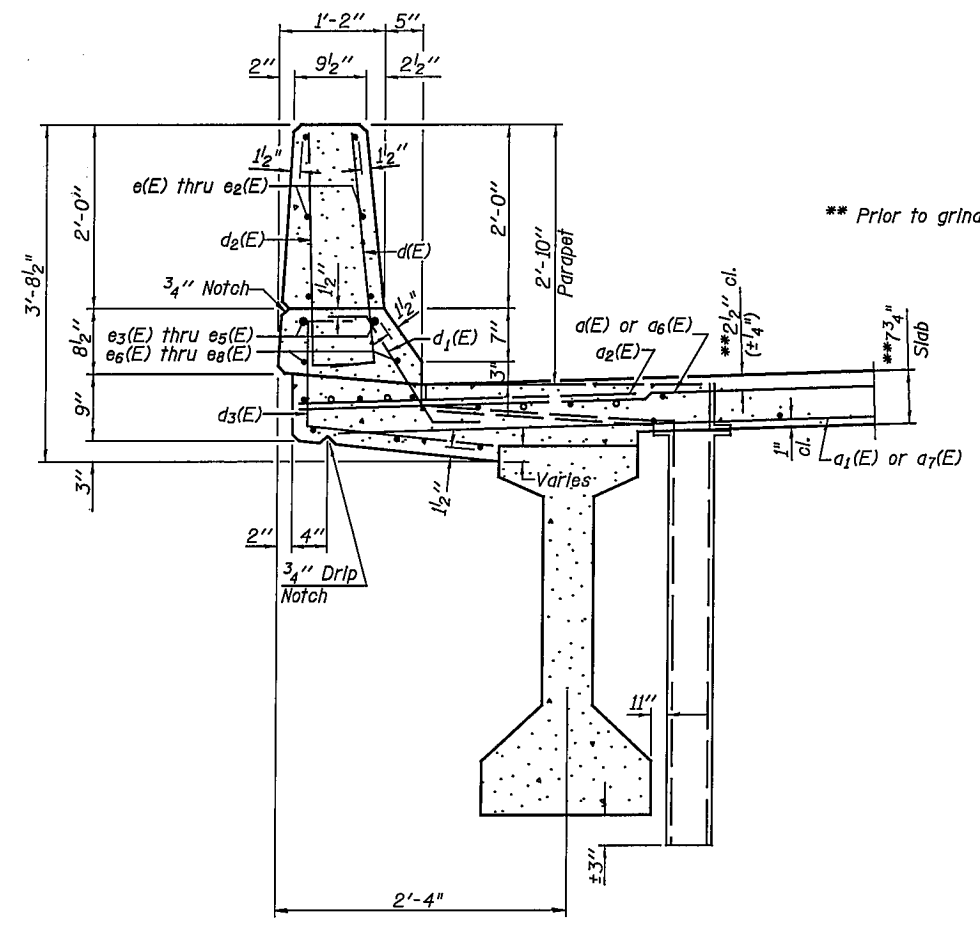


BAR d₃(E) BAR m₂(E)

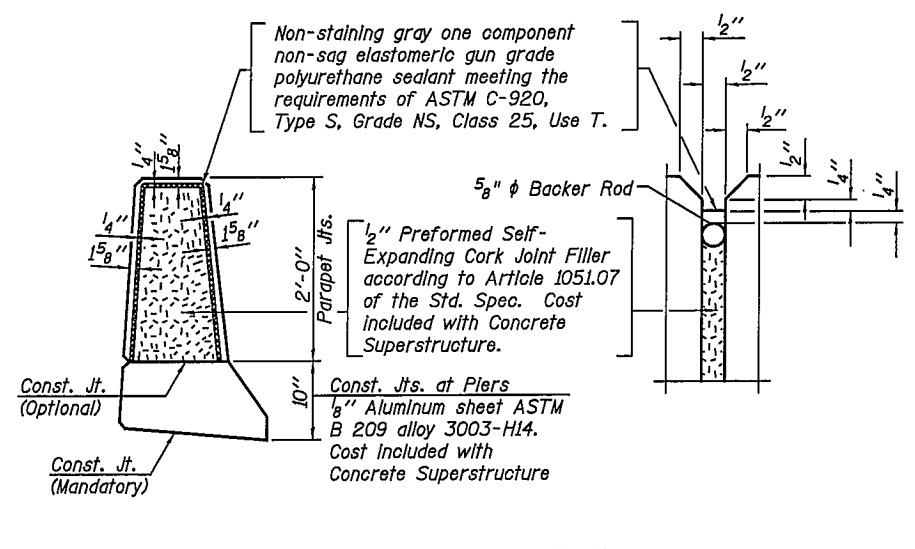


BARS s(E) & s₁(E) BAR x(E)

Reinforcement bars designated (E) shall be epoxy coated.
Bars indicated thus 1 x 2-#8 etc. Indicates 1 line with 2 lengths per line.



SECTION THRU PARAPET



PARAPET JOINT DETAILS

PARAPET DETAILS
U.S. ROUTE 136/IL. ROUTE 1 OVER NORTH FORK VERMILION RIVER
F.A.P. ROUTE 332 SEC. RX-1-BR-1 VERMILION COUNTY STATION 198+63.75 STRUCTURE NO. 092-0205

REVISIONS	NAME	DATE